



Wricklemarsh Road, SE3

£350,000

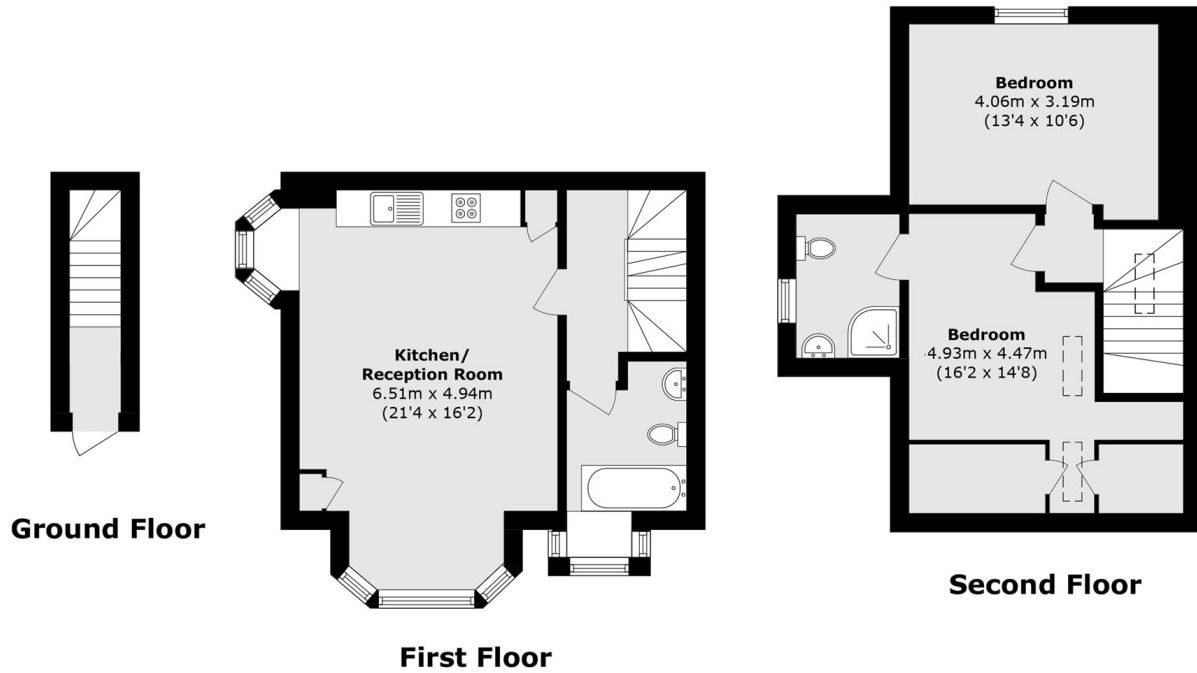
Excellent two double bedroom split-level first floor conversion flat, set over two floors and sold with no onward chain. The property comes with a long lease, off-street parking and would make an excellent first time buy. The first floor comprises a spacious open plan reception room/kitchen together with a family bathroom. On the top floor there are two good size double bedrooms, with the principal bedroom benefiting from an en-suite bathroom.

Situated in a much sought after road, opposite playing fields and close to Blackheath Royal Standard for its shops and amenities, and within easy access of Westcombe Park and Blackheath stations as well as bus services to North Greenwich.

Features

- Two Double Bedrooms
- Two Bathrooms
- Views Over Playing Fields
- No Onward Chain
- Set Over Two Levels
- Off-street Parking

Wricklemarsh Road, LONDON, SE3



Total area (approx.): 80.5 sq. m (866.5 sq. ft)