



**Blakelock Gardens, Hartlepool TS25 5QW**

**welcome to**

## **Blakelock Gardens, Hartlepool**

Nicely positioned close to Burn Valley Park is this fabulous three-storey, three-bedroomed terraced family home, offering spacious and well-planned accommodation ideal for modern living. The property is within reach of local amenities and convenient bus routes.

### **Entrance**

Entered via composite double glazed door, stairs to first floor, radiator, built in cloaks cupboard, understairs storage cupboard, door leading to the kitchen lounge, and downstairs WC.

### **Kitchen / Dining Area**

UPVC double glazed window to front, laminate flooring, radiator, range of white gloss wall and base units with complementary working surfaces and a white subway tiled splashback, inset electric oven, 4 ring electric hob, stainless steel splashback, stainless steel chimney style extractor over, round stainless steel sink/drainage with swan neck mixer tap, wall mounted Ideal combination boiler housed in one of the storage cupboards, plumbing and recess for washing machine, plumbing and recess for integrated dishwasher, integrated fridge, integrated freezer, space for dining table.

### **W C**

Vinyl flooring, low level low flush WC, wash hand basin with mixer tap on a vanity unit with a tiled splashback, radiator, extractor fan.

### **Lounge**

Laminate flooring, UPVC double glazed french doors with UPVC double glazed windows either side leading to rear garden, radiator, TV point, feature wall mounted electric fire.

### **First Floor Landing**

UPVC double glazed window to front, radiator, stairs leading to top floor, doors leading to all principle rooms.

### **Bedroom 2**

UPVC double glazed window to rear, radiator.

### **Family Bathroom**

Vinyl flooring, chrome heated towel rail, low level low flush WC, wash hand basin with mixer tap, panelled bath with tiled surround, half tiled walls, spotlights to ceiling, extractor fan.

### **Bedroom 3**

UPVC double glazed window to front, radiator.

### **Top Floor Landing**

Gives access to master bedroom.

### **Master Bedroom**

2 velux skylight windows to rear, built in storage in the eaves, TV point, 2 door built in storage cupboard, door leading to the en suite shower room.

### **En Suite Shower Room**

UPVC double glazed window to front, storage in the eaves, concealed cistern low level low flush WC, wash hand basin with mixer tap on a vanity unit, tiled splashback, double shower cubicle with tiled surround and hand held shower attachment, spotlights to ceiling, extractor fan, chrome heated towel rail, vinyl flooring.

### **Externally**

#### **Front**

Double width driveway for off street parking.

#### **Rear Garden**

Fence enclosed, over 2 tiers with a raised artificial lawn area, patio area, wooden gate to the rear that gives access for the bins, not directly overlooked from the rear.





**view this property online** [mannersandharrison.co.uk/Property/HAR120437](https://mannersandharrison.co.uk/Property/HAR120437)



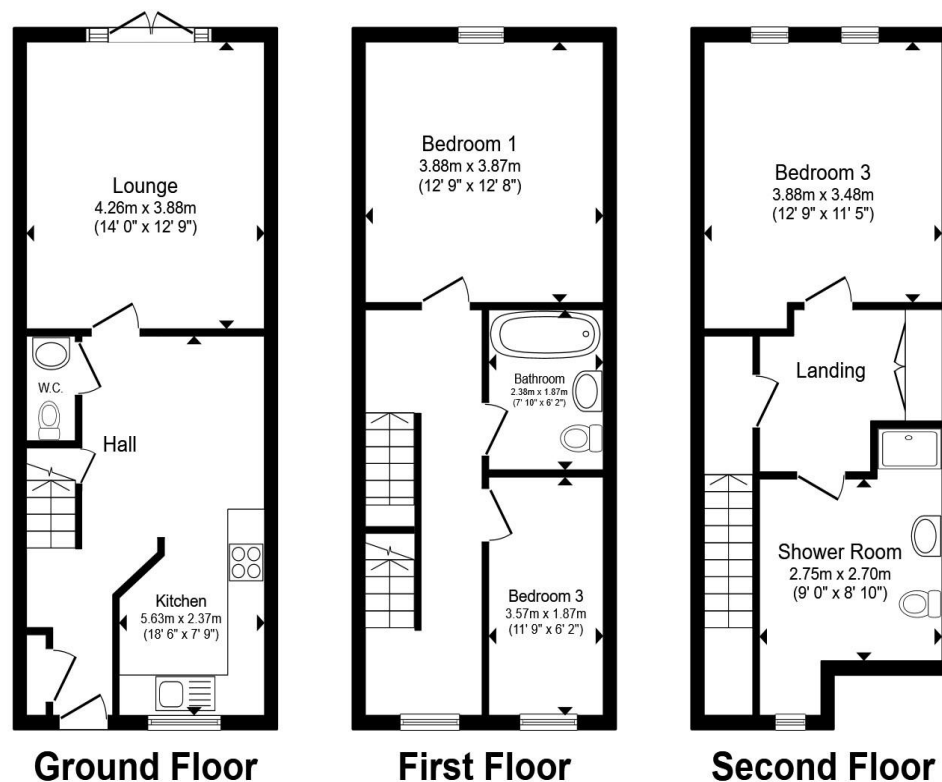
welcome to

## Blakelock Gardens, Hartlepool

- THREE STOREY HOME
- FABULOUS MASTER AND EN SUITE
- SOUTH FACING GARDEN
- PARKING
- VIEWS OF BURN VALLEY PARK

Tenure: Freehold EPC Rating: C  
Council Tax Band: B

offers over  
**£135,000**



Total floor area 114.7 m<sup>2</sup> (1,235 sq.ft.) approx

This floor plan is for illustrative purposes only. It is not drawn to scale. Any measurements, floor areas (including any total floor area), openings and orientation are approximate. No details are guaranteed, they cannot be relied upon for any purpose and they do not form part of any agreement. No liability is taken for any error, omission or misstatement. A party must rely upon its own inspection(s). Powered by [www.propertybox.io](http://www.propertybox.io)



**view this property online** [mannersandharrison.co.uk/Property/HAR120437](http://mannersandharrison.co.uk/Property/HAR120437)



Property Ref:  
HAR120437 - 0004

1. MONEY LAUNDERING REGULATIONS Intending purchasers will be asked to produce identification documentation at a later stage and we would ask for your co-operation in order that there is no delay in agreeing the sale. 2. These particulars do not constitute part or all of an offer or contract. 3. The measurements indicated are supplied for guidance only and as such must be considered incorrect. Potential buyers are advised to recheck measurements before committing to any expense. 4. We have not tested any apparatus, equipment, fixtures or services and it is in the buyers interest to check the working condition of any appliances. 5. Where an EPC, or a Home Report (Scotland only) is held for this property, it is available for inspection at the branch by appointment. If you require a printed version of a Home Report, you will need to pay a reasonable production charge reflecting printing and other costs. 6. We are not able to offer an opinion either written or verbal on the content of these reports and this must be obtained from your legal representative. 7. Whilst we take care in preparing these reports, a buyer should ensure that his/her legal representative confirms as soon as possible all matters relating to title including the extent and boundaries of the property and other important matters before exchange of contracts.

Manners & Harrison is a trading name of Sequence (UK) Limited which is registered in England and Wales under company number 4268443, Registered Office is Cumbria House, 16-20 Hockliffe Street, Leighton Buzzard, Bedfordshire, LU7 1GN. VAT Registration Number is 500 2481 05.

  
manners & harrison



**01429 261351**



[Hartlepool@mannersandharrison.co.uk](mailto:Hartlepool@mannersandharrison.co.uk)



Shrewsbury House 129 York Road,  
HARTLEPOOL, Durham, TS26 9DW



[mannersandharrison.co.uk](http://mannersandharrison.co.uk)