

Beautifully presented four bedroom detached Ravenscroft home in the heart of Milford on Sea, with stunning south facing gardens, summer house, workshop, garage and generous family living.



FELLS  
COASTAL

Keyhaven Road, Guide Price £1,000,000

Council Tax band: F, EPC Rating: D, Freehold





Occupying an enviable position in the very heart of Milford on Sea, this beautifully presented four bedroom detached Ravenscroft home combines generous family accommodation with wonderfully private landscaped gardens, creating a peaceful retreat just moments from the village centre.

Designed around modern family life, the impressive kitchen and breakfast room forms the heart of the home. Complete with a central island, it provides the perfect setting for everything from busy weekday breakfasts to relaxed evenings with family and friends. Beyond, a bright and versatile sun room enjoys lovely views across the garden and offers an ideal space as a garden room, home office or quiet place to unwind.

The bright living accommodation continues with well balanced reception rooms that provide flexibility for both everyday living and entertaining. A separate utility room and ground floor cloakroom add practicality, ensuring the home is as functional as it is welcoming.

Upstairs, four well proportioned bedrooms offer comfortable accommodation for families of all sizes. The principal bedroom benefits from its own ensuite shower room, while the remaining bedrooms are served by a well appointed family bathroom.

The gardens are a particular feature of the property. Enjoying a sought after southerly aspect, they have been thoughtfully landscaped to create a series of delightful pocket garden rooms, each providing its own peaceful corner to sit, relax and enjoy the changing seasons. A charming summer house adds further versatility, whether used for entertaining, hobbies or simply escaping with a good book.

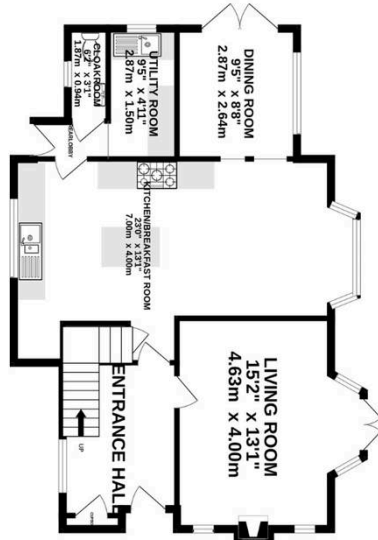
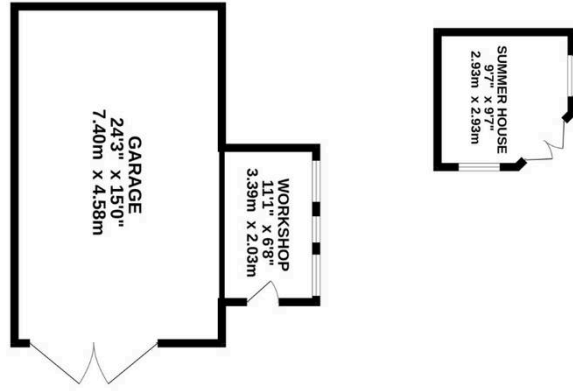
To the rear, a single garage is complemented by an extensive adjoining workshop, offering excellent storage or space for DIY enthusiasts, while two additional garden sheds and ample off road parking complete the picture.

Offering spacious accommodation, beautifully designed gardens and an exceptional village centre location, this is a home that perfectly balances everyday practicality with an enviable coastal lifestyle.

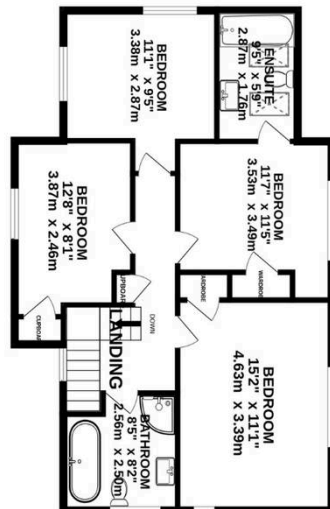
- Detached Ravenscroft family home in the heart of Milford on Sea
- Four well proportioned bedrooms
- Principal bedroom with ensuite shower room
- Spacious kitchen and breakfast room with central island
- Utility/ Washroom & Cloakroom
- Bright and versatile sun room overlooking the garden
- Landscaped south facing gardens
- Summer house ideal as a retreat or hobby space
- Single garage with extensive adjoining workshop
- Two garden sheds and generous off road parking.
- Parking for multiple vehicles
- Moments from Milford village green, shops, cafés
- Short walk to the seafront



GROUND FLOOR  
1276 sq.ft. (118.5 sq.m.) approx.



1ST FLOOR  
727 sq.ft. (67.6 sq.m.) approx.



TOTAL FLOOR AREA : 2003 sq.ft. (186.1 sq.m.) approx.

Whilst every attempt has been made to ensure the accuracy of the floorplan contained here, measurements of doors, windows, rooms and any other items are approximate and no responsibility is taken for any error, omission or mis-statement. This plan is for illustrative purposes only and should be used as such by any prospective purchaser. The services, systems and appliances shown have not been tested and no guarantee as to their operability or efficiency can be given.  
Made with Metropix ©2026

An exceptional detached family home perfectly positioned in the heart of Milford on Sea, combining generous living space, beautifully landscaped gardens and versatile outbuildings with an enviable coastal village lifestyle.