



Albion Street, SE16

£2,250 Per calendar month

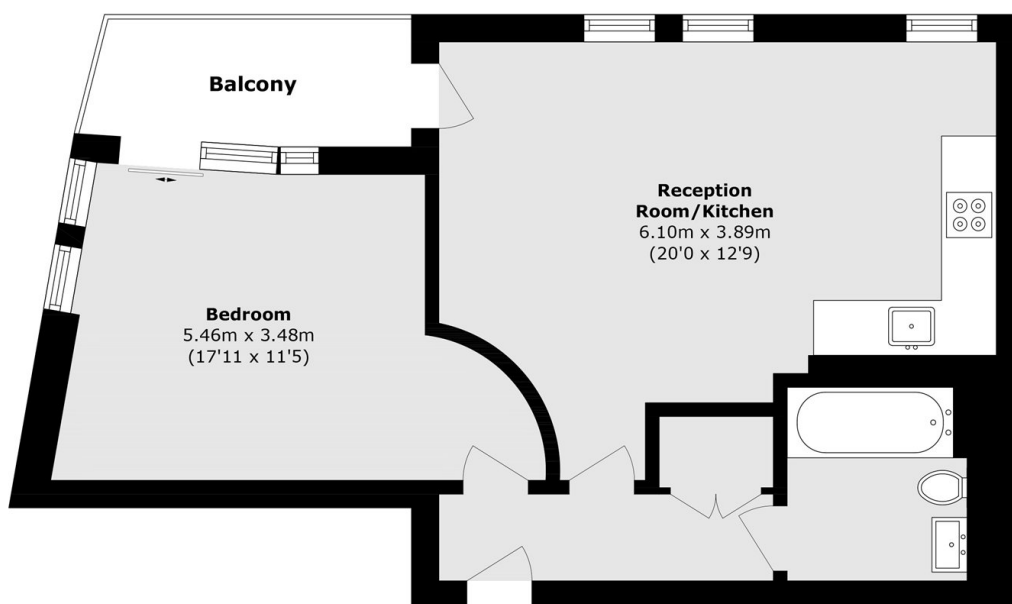
A one bed property on the top floor of a modern development. The open plan living space has a fully fitted kitchen and leads out to a private balcony that is also accessible though the bedroom. The property also has a modern bathroom and utility cupboard with a washing machine.

Built in 2025, The Albion is a five minute walk to Canada Water Station for direct access to the Jubilee and Windrush Lines. Canada Water also offers cafes, restaurants, bars and other local amenities.

Features

- One Double Bedroom
- Wood Floors
- Brand New Development
- Balcony
- Canada Water
- Rotherhithe

Albion Street, London, SE16



Total area (approx.): 49.7 sq. m (534.9 sq. ft)

Balcony area (approx.): 5.1 sq. m (54.8 sq. ft)