



School House Berwick Road, Stapleford, Salisbury, Wiltshire, SP3 4LJ

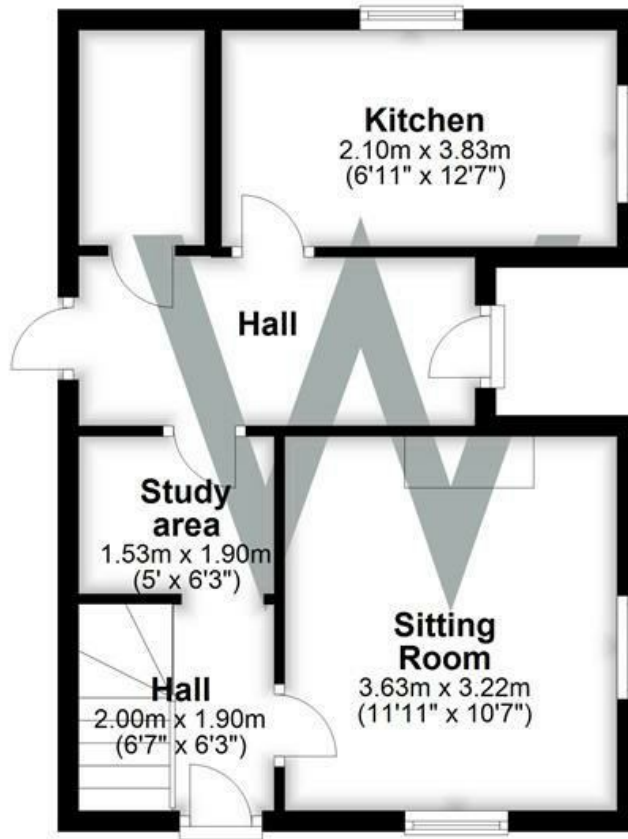
A charming, one bedroom, unfurnished former School House boasting a wealth of period features and situated in a village location, attached to the village hall with garden and parking.

- Situated in a village location.
- Character property attached to the village hall.
- Modern fitted kitchen.
- Study area.
- Sitting room.
- Double bedroom
- Bathroom with electric shower over the bath.
- Garden and parking for one car.
- Oil fired central heating
- Council tax band B

£975 PCM

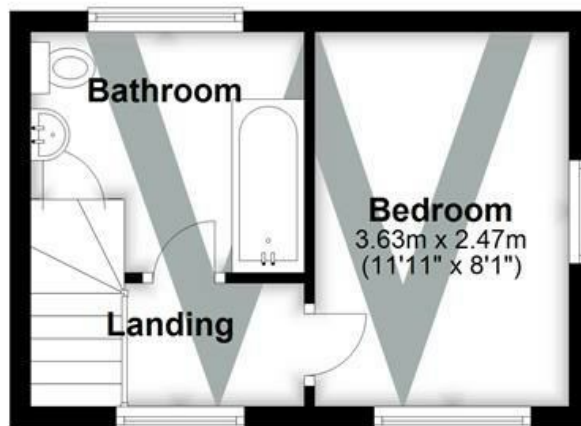
Ground Floor

Approx. 36.9 sq. metres (397.6 sq. feet)



First Floor

Approx. 18.9 sq. metres (203.8 sq. feet)



WHITES

Castle Chambers, 47 Castle Street, Salisbury,
Wiltshire, SP1 3SP

Tel: 01722 336422/Option 2

www.hwwhite.co.uk

email: lettings-management@hwwhites.co.uk

Energy Efficiency Rating	Current	Potential
Very energy efficient - lower running costs		
(92 plus) A		
(81-91) B		
(69-80) C		
(55-68) D		
(39-54) E		
(21-38) F		
(1-20) G		
Not energy efficient - higher running costs		
		87
	42	
England & Wales	EU Directive 2002/91/EC	

Environmental Impact (CO ₂) Rating	Current	Potential
Very environmentally friendly - lower CO ₂ emissions		
(92 plus) A		
(81-91) B		
(69-80) C		
(55-68) D		
(39-54) E		
(21-38) F		
(1-20) G		
Not environmentally friendly - higher CO ₂ emissions		
England & Wales	EU Directive 2002/91/EC	