

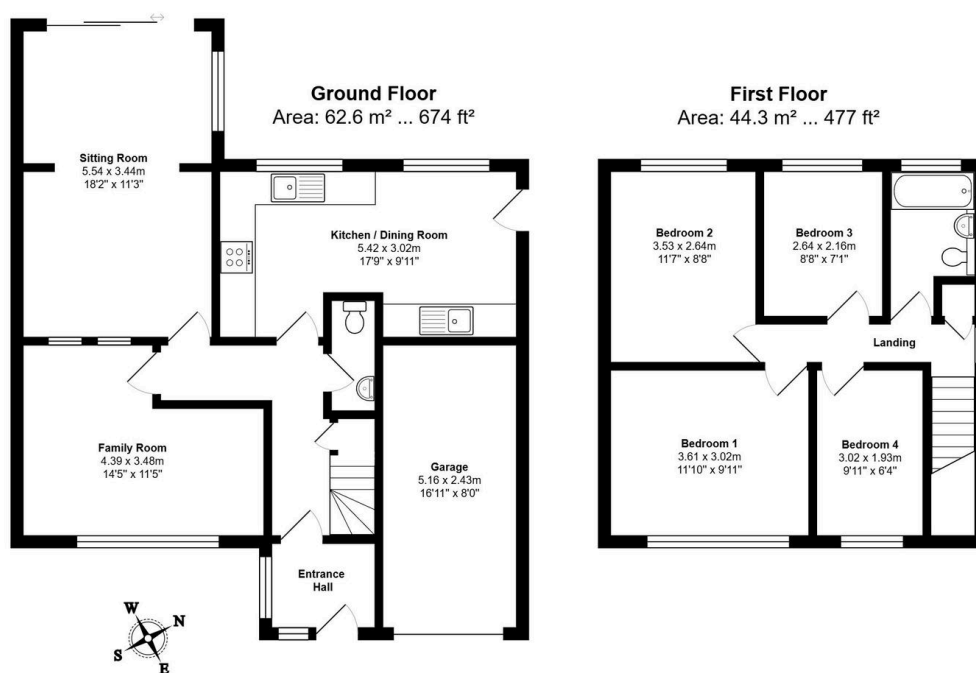
Scrolans, St. Ives, PE27 6SF

Guide Price £400,000

🛏️ 4 🚿 2 🚻 2



- Beautifully presented four-bedroom detached house
- Separate family room offering excellent flexibility for home working or family life
- Lovely enclosed rear garden with patio, lawn, pergola and garden shed
- Within the sought-after Thorndown School catchment area
- Virtual tour available upon request
- Spacious sitting room with plenty of natural light and room to breathe
- Four well-proportioned bedrooms with real space in all rooms
- Garage plus driveway parking for multiple vehicles
- Popular and established St Ives residential location close to all amenities
- EPC Rating C/69



Total Area: 106.9 m² ... 1151 ft² (excluding garage)

All measurements are approximate and for display purposes only

A beautifully presented four-bedroom detached home in a sought-after St Ives location, ready to move straight into – with the kind of garden that makes you want to stay.