



## Littleton Road, TW15

£250,000

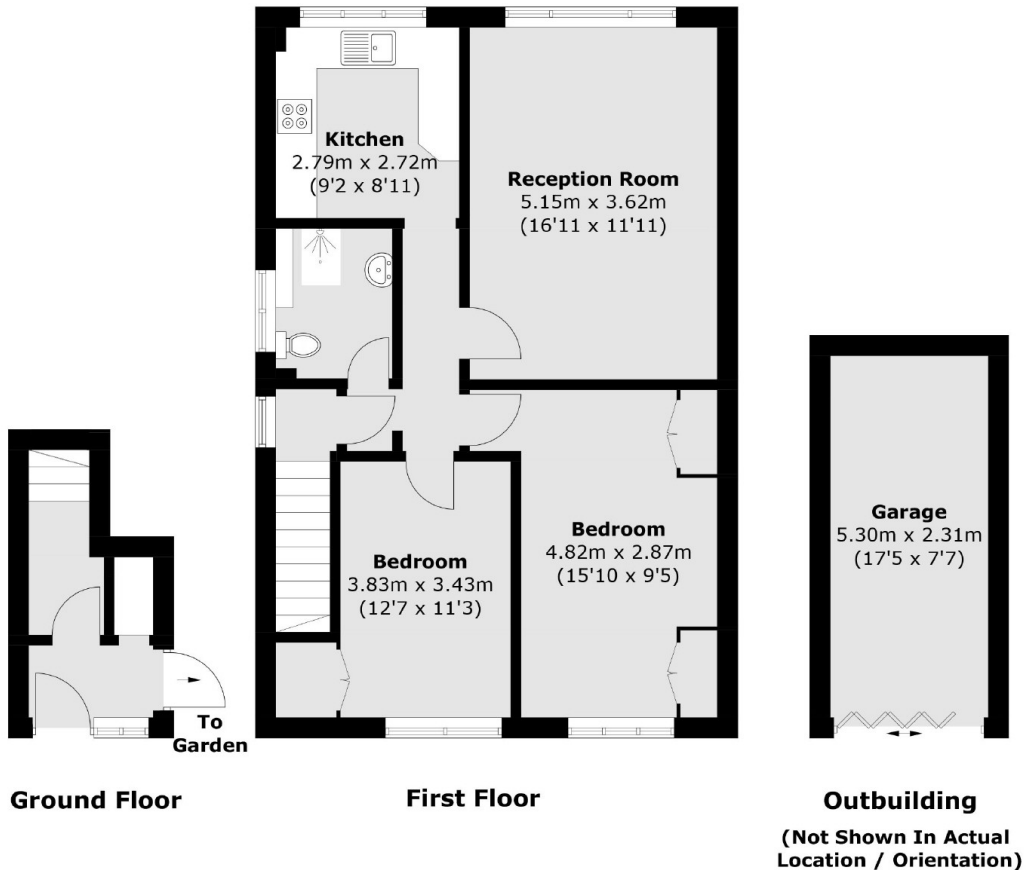
A two bedroom first floor maisonette with a private garden, off-street parking and a garage. The property has a light a spacious feel and is being sold with the added bonus of no forward chain. Cash buyers only!

Littleton Road is located on the borders of Ashford, Shepperton and Sunbury On Thames. Sunbury station is approximately one mile away and provides a direct service into London Waterloo.

### Features

- First Floor
- Two Bedrooms
- Garage
- Garden
- Off-Street Parking
- No Forward Chain

# Littleton Road, Ashford, TW15



Total area (approx.): 71.2 sq. m (766.3 sq. ft)  
Garage: 12.5 sq. m (134.5 sq. ft)