



## Park Road, SW19

£465,000

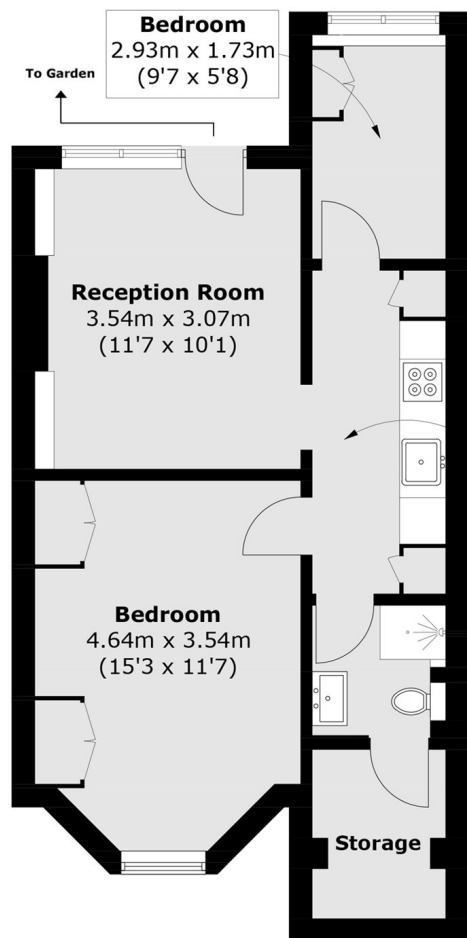
A larger than average and superb ground floor garden flat in the heart of Colliers Wood with a stunning interior opening onto a front reception room, a stylish fitted kitchen, two bedrooms, a newly renovated bathroom and an un-matched garden with an outbuilding studio & storage.

Park Road is a tree lined residential road positioned perfectly for the many shops, bars and restaurants of both Tooting and Colliers Wood with Colliers Wood Underground and Tooting Railway stations also nearby.

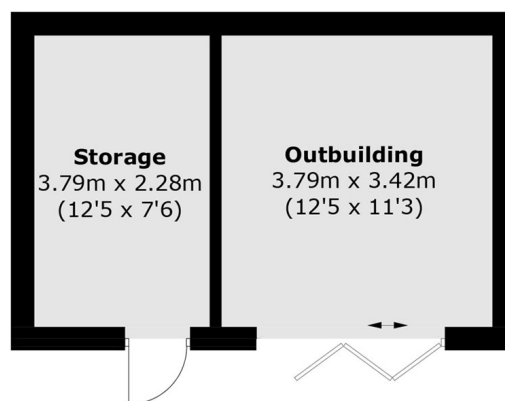
### Features

- Two Bedrooms
- Amazing Garden
- Stunning Interior
- Own Front Door
- Fitted Kitchen
- Outbuilding/Studio

# Park Road, London, SW19



**Lower Ground Floor**



**Ground Floor**

Total area (approx.): 50.5 sq. m (543.6 sq. ft)  
Storage / Outbuilding: 23.0 sq. m (247.6 sq. ft)