



## 57 Fairfax Close

Biddulph, ST8 6ER



**Price £92,000**

Carters are delighted to present this beautifully presented one-bedroom apartment, ideally located on the third floor of a popular development on Fairfax Close.

The property offers a bright and spacious living room with an attractive bay window, allowing plenty of natural light to fill the space. The modern fitted kitchen is both stylish and practical, perfect for everyday cooking and entertaining.

This ready-to-move-into home benefits from one reception room, one double bedroom, and a contemporary bathroom. With no onward chain, it's ideal for first-time buyers or those looking to downsize.

Additional features include private parking for one vehicle and close proximity to local shops, parks, and amenities, providing convenience and a friendly community feel.

Don't miss out on this superb opportunity — arrange your viewing today!

# 57 Fairfax Close

Biddulph, ST8 6ER

Price £92,000



## Entrance Hallway

Entrance door to the side elevation. Intercom. Built in storage cupboard. Electric wall heater.

## Living Room

16'7" x 14'7" (5.05m x 4.45m)  
Three UPVC double glazed windows to the bay frontage to the rear elevation. UPVC double glazed window to the side elevation.  
Electric heater.

## Kitchen / Dining Room

9'9" x 9'8" (2.97m x 2.95m)  
UPVC double glazed window to the side elevation.  
Fitted kitchen with a range of wall, base and drawer units. Laminate work surface. Electric oven. Electric four ring hob. Built in extractor fan. Space for a fridge freezer. Space for a washing machine. Space for a tumble dryer. Partially tiled walls. Electric heater. Vinyl flooring.

## Bedroom

8'3" x 14'5" (2.51m x 4.39m)  
UPVC double glazed window to the rear elevation.  
Electric heater. Wardrobes and drawer units included within the sale.

## Bathroom

6'6" x 6'2" (1.98m x 1.88m)  
Modern three piece fitted bathroom suite comprising of; panel bath with a wall mounted shower, pedestal wash hand basin and a low level w.c. Mirror fronted storage cabinet. Extractor fan. Electric heater. Partially tiled walls. Vinyl flooring.

## Externally

Externally there is a private residents only car park providing off road parking, and a landscaped communal garden to the front elevation.

## Additional Information

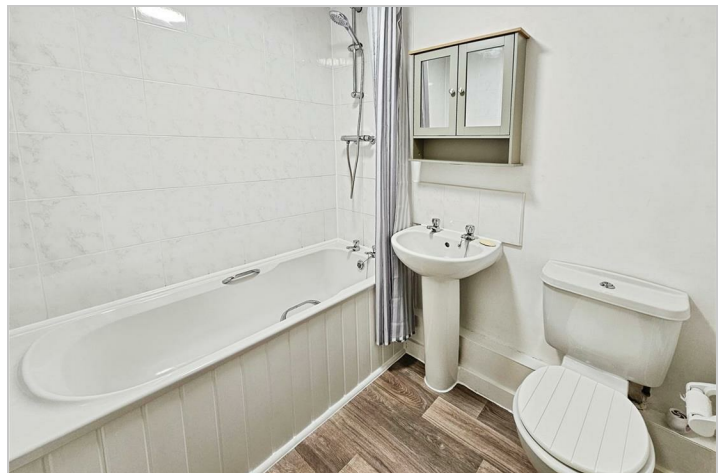
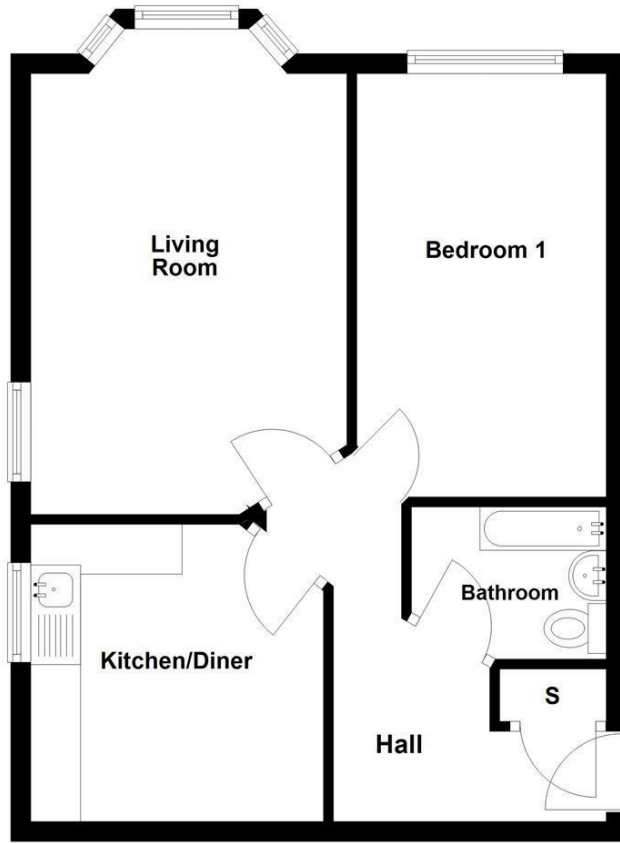
Leasehold. Council Tax Band A.  
Total Floor Area: 47 Square Meters / 505 Square Foot.

## Disclaimer

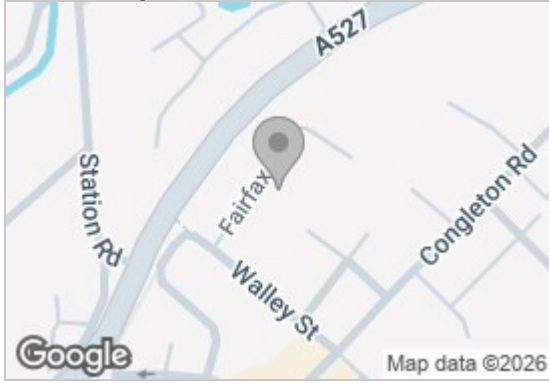
Although we try to ensure accuracy, these details are set out for guidance purposes only and do not form part of a contract or offer. Please note that some photographs have been taken with a wide-angle lens. A final inspection prior to exchange of contracts is recommended. No person in the employment of Carters Estate Agents Ltd has any authority to make any

representation or warranty in relation to this property. We obtain some of the property information from land registry as part of our instruction and as we are not legal advisers we can only pass on the information and not comment or advise on any legal aspect of the property. You should take advice from a suitably authorised licensed conveyancer or solicitor in this respect.

# Ground Floor



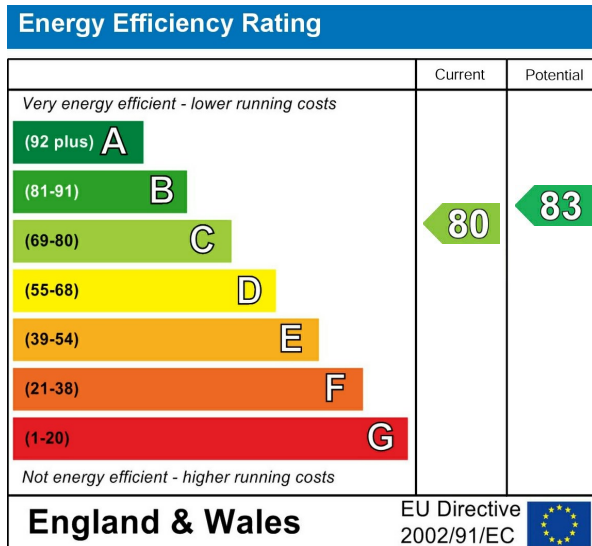
## Road Map



## Hybrid Map



## Energy Efficiency Graph



## Viewing

Please contact our Carters Estate Agents Office on 01782 470391 if you wish to arrange a viewing appointment for this property or require further information.

These particulars, whilst believed to be accurate are set out as a general outline only for guidance and do not constitute any part of an offer or contract. Intending purchasers should not rely on them as statements of representation of fact, but must satisfy themselves by inspection or otherwise as to their accuracy. No person in this firm's employment has the authority to make or give any representation or warranty in respect of the property.

**101 High Street Biddulph Stoke on Trent Staffs ST8 6AB**  
**01782 470391**  
**www.carters-estateagents.co.uk**