



**Pembroke Crescent
Hove, BN3 5DG**

FERMERS



- 2 
- 2 
- 1 


TENURE
Freehold

EPC RATING

COUNCIL TAX BAND
C

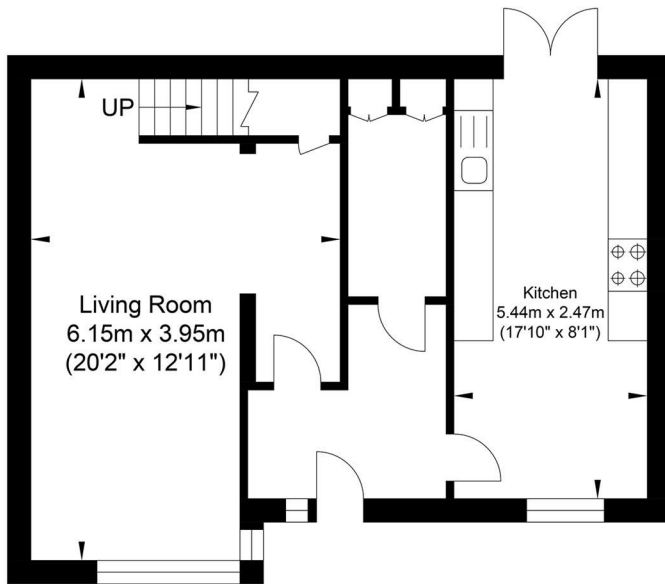


Energy Efficiency Rating

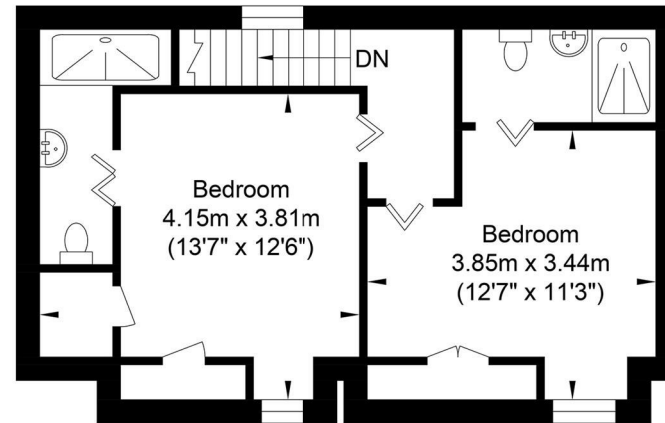
	Current	Potential
Very energy efficient - lower running costs		
(92 plus) A		
(81-91) B		
(69-80) C		
(55-68) D		
(39-54) E		
(21-38) F		
(1-20) G		
Not energy efficient - higher running costs		
England & Wales	EU Directive 2002/91/EC 	



Pembroke Crescent



Ground Floor
Approximate Floor Area
476.94 sq ft
(44.31 sq m)



First Floor
Approximate Floor Area
388.57 sq ft
(36.10 sq m)

Approximate Gross Internal Area = 80.41 sq m / 865.52 sq ft
Illustration for identification purposes only, measurements are approximate, not to scale.

FERMERS

OFFICE ADDRESS

67 Queen Victoria Avenue
Hove
East Sussex
BN3 6XA

OFFICE DETAILS

Sales@Fermers.co.uk

01273 541 177

www.Fermers.co.uk

Agents Note: Whilst every care has been taken to prepare these particulars, they are for guidance purposes only. All measurements are approximate and are for general guidance purposes only and whilst every care has been taken to ensure their accuracy, they should not be relied upon and potential buyers/tenants are advised to recheck the measurements