



Cofferdam Way, SE8

£550,000

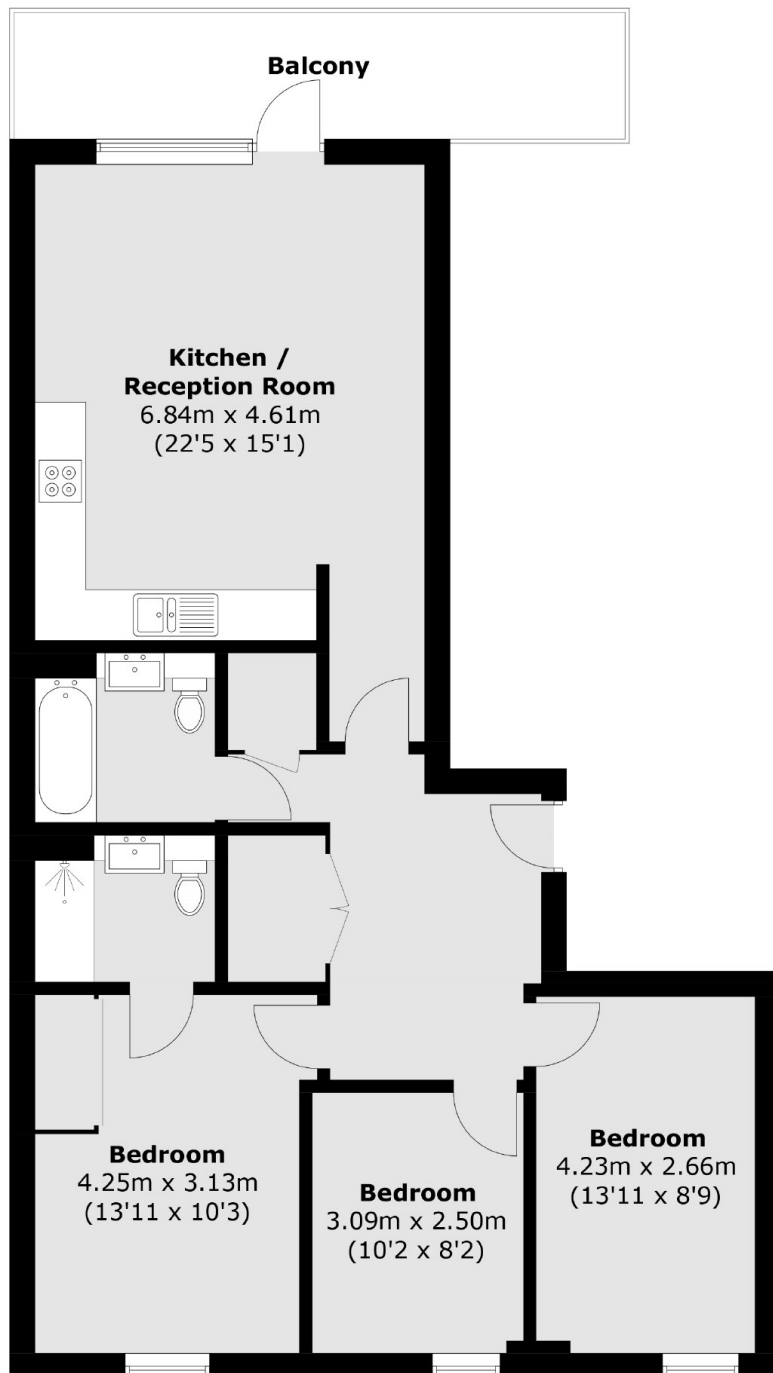
A beautifully presented three bedroom two bathroom apartment which has been finished to an amazing standard and further benefits from a private balcony, communal roof top gardens and a 24/7 gym.

Excellent located just a short walk from both Surrey Quays and Deptford train station (for trains to London Bridge and Cannon Street) and Cutty Sark DLR in Greenwich (for Canary Wharf and Bank). There are also plenty of restaurants, bars and shops located nearby with vibrant Deptford High Street on your doorstep and the centre of historic Greenwich just along the river. Situated on the Thames River Path which takes you all the way through Greenwich past the Cutty Sark and Old Royal Naval College, up to the O2.

Features

- Ideal First Purchase
- Private Balcony
- Two Bathrooms
- Sought After Location
- Three Bedrooms
- Low Service Charge

Cofferdam Way,
London, SE8



Total area (approx.): 85.1 sq. m (916.0 sq. ft)
Balcony: 10.8 sq. m (116.2 sq. ft)

Dexters

Greenwich
275 Greenwich High Road
Greenwich
London
Sales
020 8815 2215

Energy Rating: B. We aim to make our particulars both accurate and reliable. However they are not guaranteed; nor do they form part of an offer or contract. If you require clarification on any points then please contact us, especially if you're traveling some distance to view. Please note that appliances and heating systems have not been tested and therefore no warranties can be given as to their good working order.

 **RICS** | Regulated
Estate Agent
and Letting Agent

[dexters.co.uk](https://www.dexters.co.uk)