



Brunel Lodge  
34 Vicarage Crescent, SW11

CHESTERTONS





SHORT LET. Charming and immaculately presented one double bedroom apartment in Brunel Lodge furnished with bills included. Located moments from the river Thames and a short walk to Battersea Park and Chelsea.

Brunel Lodge is a small block superbly situated next to the picturesque Battersea Square. The apartment offers a good-sized double bedroom with walk in wardrobe area, reception room with adjoining separate kitchen all with windows facing the rear of the building. There is also a modern family bathroom and storage cupboard off the hallway.

The flat is in very close proximity to the Thames riverside walk, as well as the shops and restaurants of Battersea Square including Gail's Bakery.

Options for travelling over the river are by train from Clapham Junction direct to Victoria and Northwest London plus there are many local bus routes including one that runs through Battersea Square direct to Victoria via Lower Sloane Street with access to Sloane Square and the Kings Road. Additionally, the City can be easily accessed from Sloane Square. The Clipper River boat is also a great way to get around, one of the many benefits of riverside living.

- Short Let
- Bills Included
- Fully Furnished
- One Bedroom
- South facing
- Battersea Square

**£2,250 pcm**

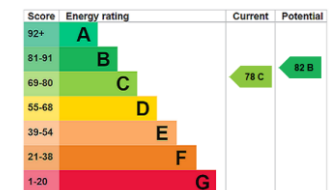
Additional tenant charges apply (fees apply to non-AST tenancies only)

Tenancy Agreement Fee: £300

References per Tenant/Guarantor: £60

Inventory check (approx. £100 – £250 inc. VAT)

[chestertons.co.uk/property-to-rent/applicable-fees](http://chestertons.co.uk/property-to-rent/applicable-fees)

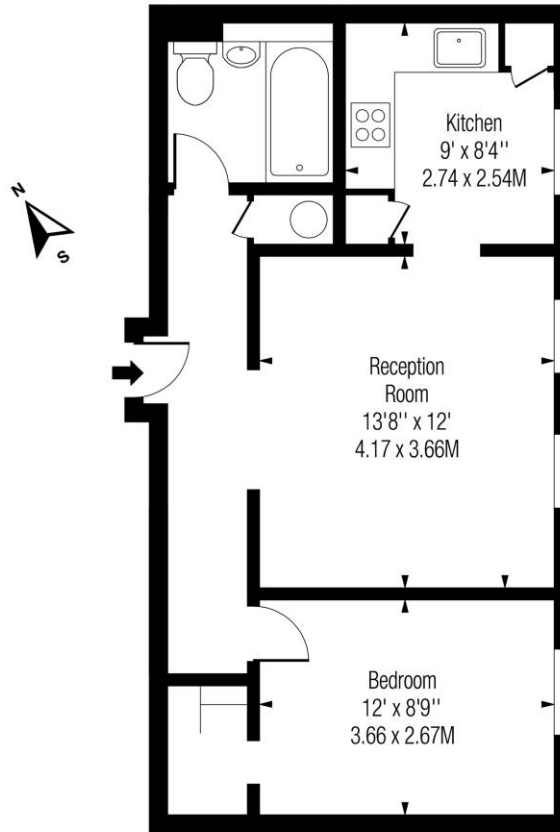


**Minimum Term:** 1 months  
**Deposit Required:** £1,038.46  
**Local Authority:** London Borough of Wandsworth  
**Council Tax Band:** D  
**EPC Rating:** C  
**Furnished**

**Chestertons Battersea Park & Nine Elms Lettings**

62-64 Battersea Bridge Road  
 London  
 SW11 3AG  
[batterseapark@chestertons.co.uk](mailto:batterseapark@chestertons.co.uk)  
 02030408269  
[chestertons.co.uk](http://chestertons.co.uk)

## Vicarage Crescent, SW11



Second Floor

Approx Gross Internal Area **507 Sq Ft - 47.10 Sq M**

Includes Limited Use Area - 3 Sq Ft  
Drawn in Accordance with IPMS 3B: Residential  
Illustration For Identification Purposes Only - Not to Scale  
[www.homespacestudio.co.uk](http://www.homespacestudio.co.uk) - Ref. No. 53598



Chesterton UK Services Limited trading as Chestertons for themselves and for the vendor of this property whose agents they are, give notice that (i) these particulars do not constitute any part of an offer or contract, (ii) all statements contained within these particulars are made without responsibility on the part of Chestertons or the vendor, (iii) whilst made in good faith, none of the statements contained within these particulars are to be relied upon as a statement or representation of fact, (iv) any intending purchasers must satisfy themselves by inspection or otherwise as to the correctness of each of the statements contained within these particulars, (v) the vendor does not make or give either Chestertons or any person in their employment any authority to make or give representation or warranty whatsoever in relation to this property. Wide angle lenses may be used. ©Copyright Chestertons | Chesterton Global Ltd | Registered Office 40 Connaught Street, Hyde Park, London W2 2AB Registered Company Number 05334580.



This paper is  
100% recyclable