

8 Village Centre, £195,000*

(Other charges apply)

RICHMOND
VILLAGES

Part of Bupa



1



1



EPC - C



1 bedroom ground floor apartment

This beautifully presented apartment offers a perfect blend of comfort, style and practicality, ideal for modern, low-maintenance living. With its own private entrance, bright and spacious interiors, and thoughtful design throughout, the property provides a welcoming and versatile home. Residents also benefit from access to stunning communal grounds and village amenities, creating a truly enjoyable lifestyle both inside and out.

Specification

- A spacious living room with a large bay window offering views of the bowling green, complimented by a feature fireplace.
- Modern fitted kitchenette with fitted wall and base units, under-cupboard lighting, and integrated fridge with freezer compartment.
- A spacious bedroom with double-glazed window and beautiful views.
- Shower room with walk-in shower and wood finish fitted suite.
- Entrance hall with a storage cupboard offering space for belongings.
- TV and satellite points*.
- Beautifully maintained communal gardens with nearby bowling green, nature reserve, and private allotments.



*Satellite subscription not included.

Important Notice: These particulars are intended to give a fair and substantially correct overall description. All dimensions are approximate. The properties are sold unfurnished. Properties are sold on a 125 year lease and this property has 110 years remaining.

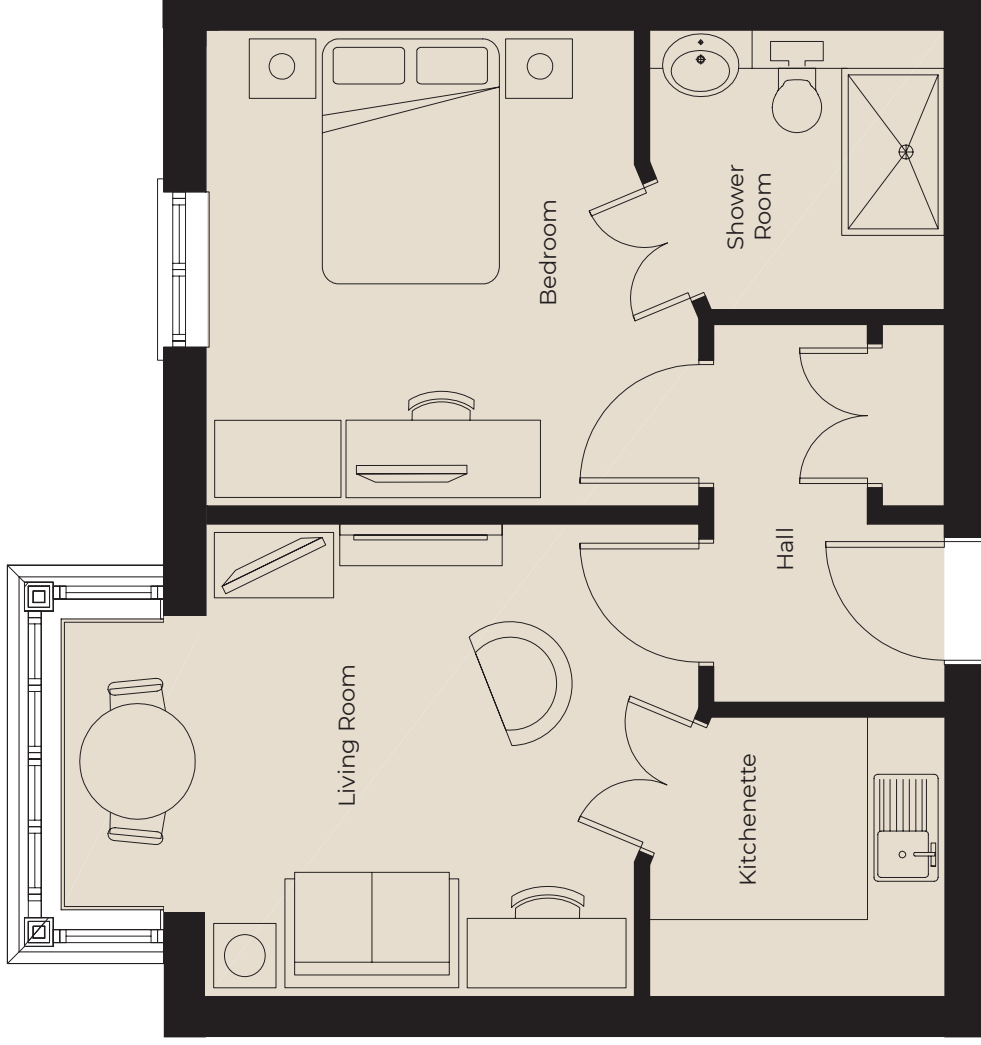
01235 773970

letcomberegis@richmond-villages.com

Richmond Villages Letcombe Regis,
South Street, Letcombe Regis, Oxfordshire OX12 9RG

8 Village Centre

Ground Floor



Kitchenette
2300mm x 2180mm
7'7" x 7'2"
Living Room
3685mm x 3685mm
12'7" x 12'1"
Bedroom
3685mm x 3710mm
12'7" x 12'2"
En Suite Shower Room
2300mm x 2180mm
7'7" x 7'2"

These particulars are intended to give a fair and substantially correct overall description. Measurements have been taken at 1500mm skirting height. All dimensions are approximate. Bedroom measurements include the wardrobe if applicable. Room measurements include bay windows if applicable. Furniture layout is to give an indicative impression. Although all efforts have been made to ensure its accuracy at time of print dimensions, fixtures, fittings, finishes and specifications are subject to change without notice. The properties are sold unfurnished.

