




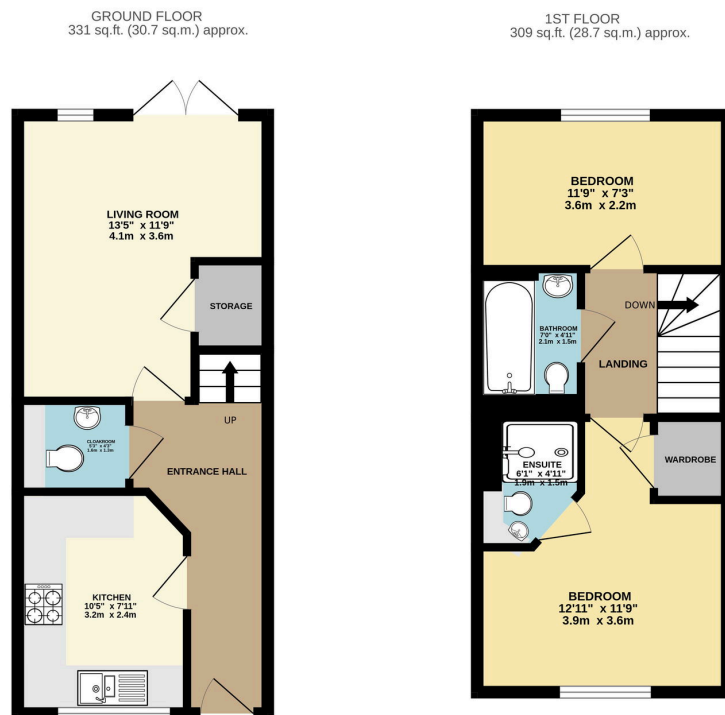
Shafford Meadows, Hedge End, Southampton, SO30

Offers Over £300,000

 2  2  1



- Perfect Starter Home For A First Time Buyer
- Two Well Proportioned Bedrooms
- Built By Linden Homes In 2014
- Two Allocated Parking Spaces Directly In Front Of The House
- Walking Distance To Hedge End Village & Retail Park As Well As Turnpike Park
- Spacious Semi-Detached Home
- Situated Within A Cul De Sac
- Current Owners Have Seen A Property Of Interest To Purchase
- Well Landscaped Garden Offering Multiple Seating Areas & Side Gated Access
- Easy Access To Motorway



TOTAL FLOOR AREA: 640 sq.ft. (59.5 sq.m.) approx.
 Whilst every attempt has been made to ensure the accuracy of the floorplan contained herein, measurements of doors, windows, rooms and any other items are approximate and no responsibility is taken for any error, omission or mis-statement. This plan is for illustrative purposes only and should be used as such by any prospective purchaser. The services, systems and appliances shown have not been tested and no guarantee as to their operability or efficiency can be given.
 Made with Metapix 10/2015

Nestled in a sought-after development and built by Linden Homes in 2014, this beautifully presented two-bedroom semi-detached home is perfect for modern living. With two private parking spaces conveniently located directly in front of the property, this home offers both style and practicality in equal measure.

Whether you're a first-time buyer, down sizer, or investor, this turnkey home delivers quality, convenience, and a touch of luxury in a peaceful yet well-connected setting.



MARCO HARRIS
THE PROPERTY PROFESSIONALS