



Oakhill Road, SW15

£550,000

Set within an attractive period mansion block on the sought-after Oakhill Road, this bright and well-presented two-bedroom apartment offers approximately 659 sq ft of thoughtfully arranged living space.

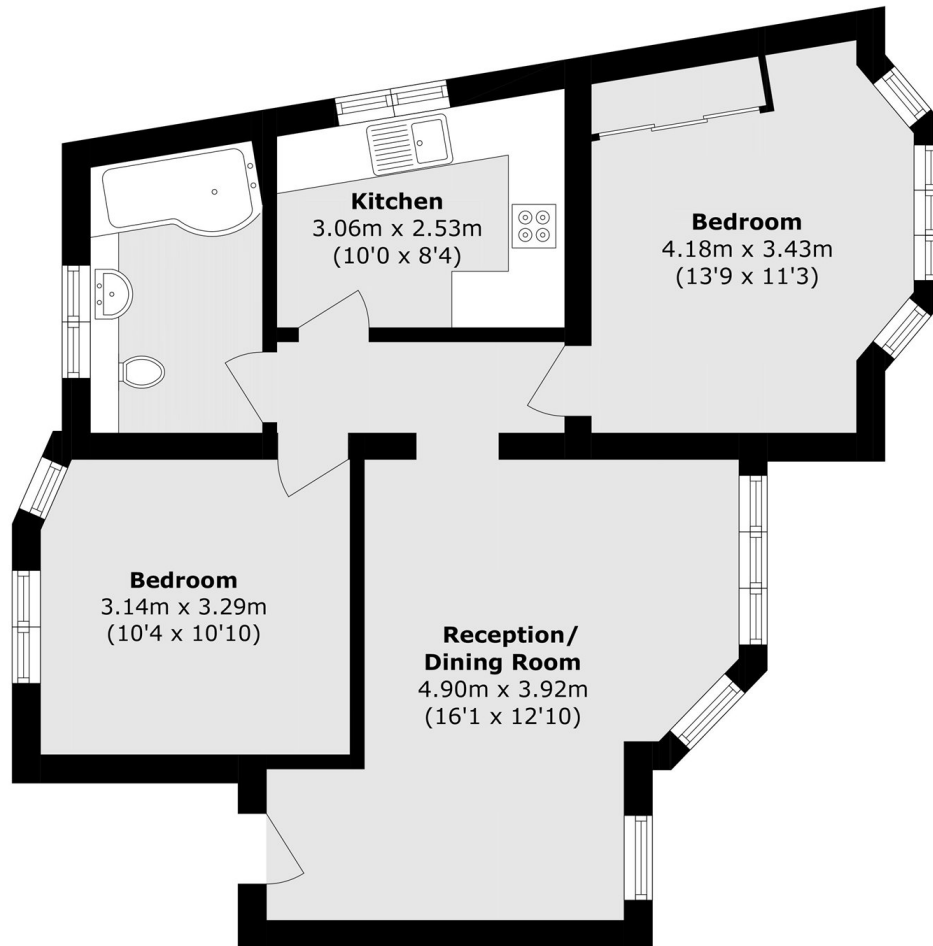
The property features a generous reception/dining room with attractive bay windows, providing an excellent space for both relaxing and entertaining. A separate contemporary kitchen offers ample worktop space, integrated appliances and plentiful storage. There are two well-proportioned double bedrooms, including a spacious principal bedroom, together with a modern bathroom. High ceilings, large windows and neutral décor enhance the sense of light and space throughout.

Oakhill Road is a popular residential address in the heart of Putney, conveniently located for the shops, cafés and restaurants of Putney High Street, as well as the green open spaces of Wandsworth Park and the River Thames. Excellent transport links are available from nearby Putney Station, with direct services to London Waterloo, and East Putney Underground station.

Features

- Chain Free
- 658 sq. ft
- Two Bedrooms
- One Bathroom
- Period
- Share of Freehold

Oakhill Road, London, SW15



Total area (approx.): 61.2 sq. m (658.8 sq. ft)