



26 Burlington Road , Portsmouth, PO2 0DP

Guide price £260,000



26 Burlington Road

, Portsmouth, PO2 0DP

Guide price £260,000



Offered to the market with no forward chain, this delightful two-bedroom single bay and forecourt terraced home is full of charm, character and individuality. Beautifully blending original period features with comfortable modern living, the property offers a warm and welcoming atmosphere throughout, making it an ideal first-time purchase, downsizing opportunity or investment.

Stepping through the front door, you are greeted by an inviting entrance hall leading into the elegant front living room. A beautiful bay window allows natural light to pour in, while original wooden flooring and a feature fireplace create a cosy yet stylish setting that perfectly reflects the home's character. Every room has been thoughtfully maintained to celebrate the property's heritage, giving it a unique personality that is difficult to find.

The separate dining room provides an excellent space for entertaining family and friends, again featuring attractive wooden flooring and another charming fireplace, creating a wonderful focal point. Its generous proportions make it ideal for both everyday dining and special occasions, while retaining a warm, homely feel.

To the rear, the fitted kitchen offers ample storage and workspace, flowing naturally into a bright conservatory that provides additional living space. Whether used as a breakfast room, reading nook or home office, this versatile area enjoys pleasant views over the beautifully established rear garden and creates an effortless connection between the indoors and outdoors.

Outside, the enchanting rear garden is a true hidden gem. Filled with mature planting and an abundance of greenery, it offers a peaceful escape from everyday life. Meandering through the garden reveals a secluded seating area tucked away at the rear, providing the perfect spot to relax with a morning coffee, enjoy a good book or entertain guests during the warmer months. This private retreat adds to the property's quirky appeal and makes the garden a truly special feature.

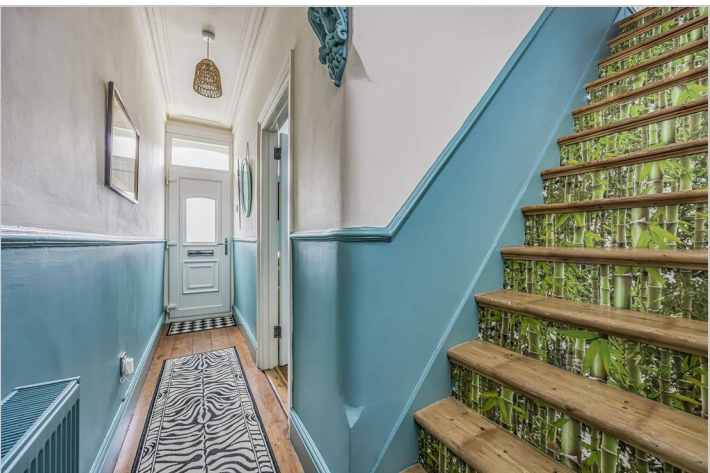
The first floor offers two generously sized double bedrooms, both continuing the home's characterful feel with attractive proportions and plenty of natural light. Completing the accommodation is the well-appointed family bathroom, conveniently located upstairs.

This wonderful home is packed with original features including fireplaces, wooden floors and period detailing, all of which combine to create a property with genuine warmth and timeless appeal. Its quirky layout and abundance of character make it stand out from the ordinary, offering buyers something truly distinctive.

Situated in the heart of the ever-popular Copnor district, Burlington Road is ideally positioned close to a range of local shops, cafés, well-regarded schools and excellent transport links. Portsmouth city centre, Hilsa train station and the seafront are all within easy reach, making this an exceptionally convenient location for commuters and families alike.

Offering charm, character, a beautiful mature garden and the added advantage of no forward chain, this

unique home is ready for its next owner to enjoy. Early viewing is highly recommended to appreciate everything this delightful property has to offer.



Road Map



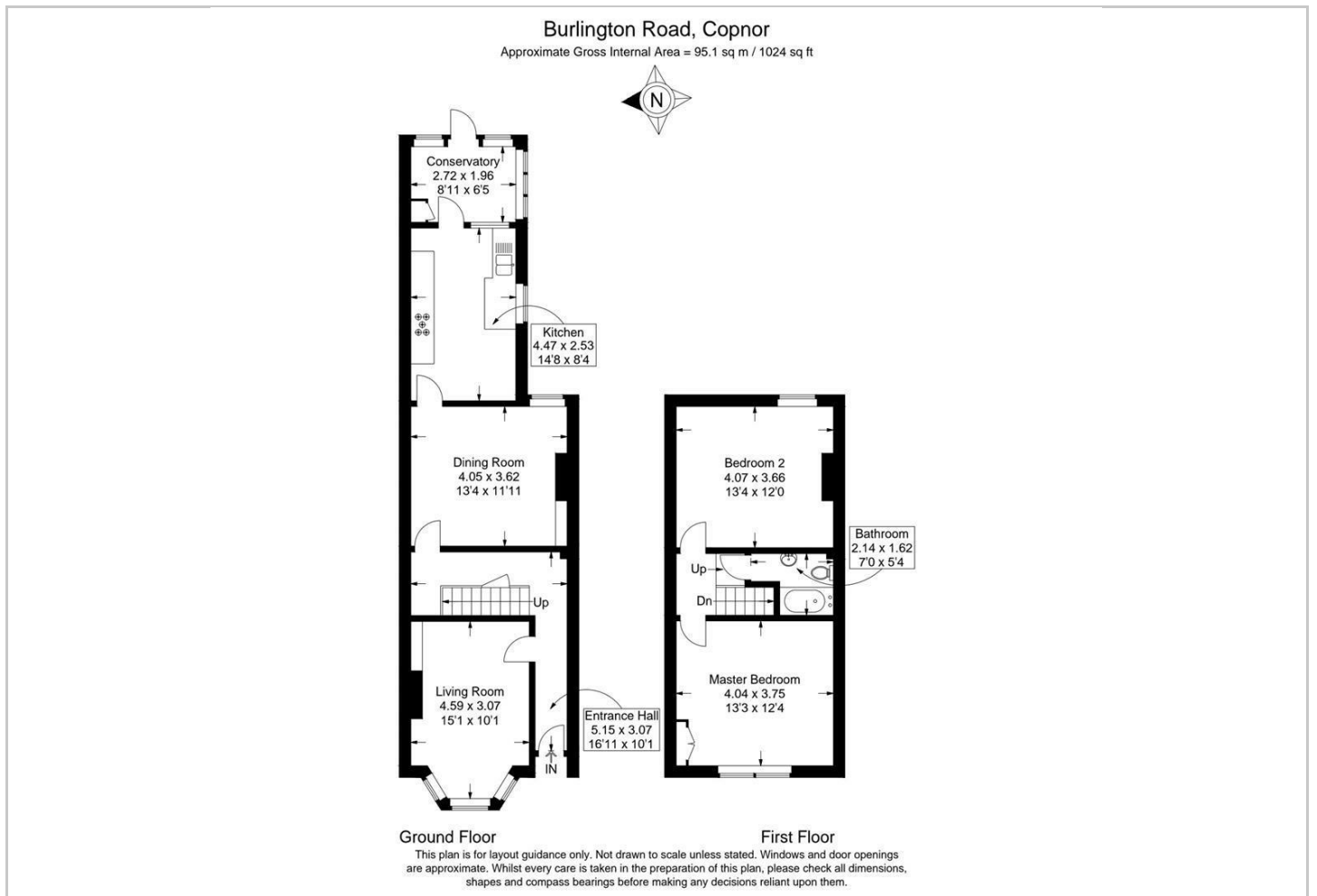
Hybrid Map



Terrain Map



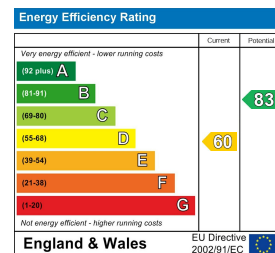
Floor Plan



Viewing

Please contact our Central Office on 02394 217317 if you wish to arrange a viewing appointment for this property or require further information.

Energy Efficiency Graph



These particulars, whilst believed to be accurate are set out as a general outline only for guidance and do not constitute any part of an offer or contract. Intending purchasers should not rely on them as statements of representation of fact, but must satisfy themselves by inspection or otherwise as to their accuracy. No person in this firm's employment has the authority to make or give any representation or warranty in respect of the property.