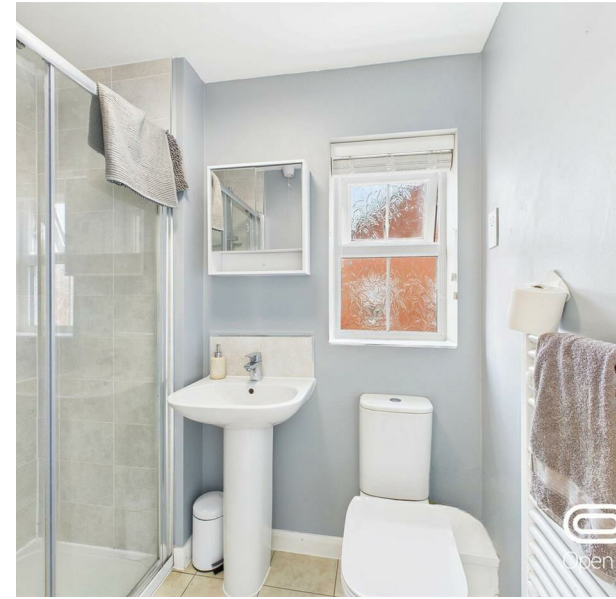


Dewsbury Crescent, Stafford, ST18 0YW

Offers Over £230,000

Council Tax Band: C



### Chain Free

Situated on Dewsbury Crescent in Stafford, this modern three-bedroom semi-detached home, built in 2017, combines contemporary style with practical family living. Offering around 840 sq. ft. of well-planned space, it's ideal for first-time buyers, young families, or professionals.



Open House Staffordshire



Energy Efficiency Rating		
	Current	Potential
Very energy efficient - lower running costs		
(92 plus) <b>A</b>		<b>96</b>
(81-91) <b>B</b>	<b>83</b>	
(69-80) <b>C</b>		
(55-68) <b>D</b>		
(39-54) <b>E</b>		
(21-38) <b>F</b>		
(1-20) <b>G</b>		
Not energy efficient - higher running costs		
<b>England &amp; Wales</b>	EU Directive 2002/91/EC	