



WETHERELL
MAYFAIR'S FINEST PROPERTIES



Upper Grosvenor Street, W1K

£18,950 PCM

A recently refurbished, three bedroom apartment set over the first and second floors of a popular 24 hour portered building in the heart of Mayfair.

Entering the apartment from the first floor you are greeted with a large hallway that leads to a double reception with separate lounge and dining areas and all five windows facing towards Upper Grosvenor Street, ideal for entertaining.

Comprising three double bedrooms, two en-suite bathrooms, additional shower room, separate eat-in kitchen and a guest cloakroom.

The property has access to a communal garden and further benefits include 24 hour portorage and passenger lift to both floors.

Upper Grosvenor Street is one of the area's most sought after addresses and is within short walking distance of the surrounding boutiques and restaurants of Mayfair.

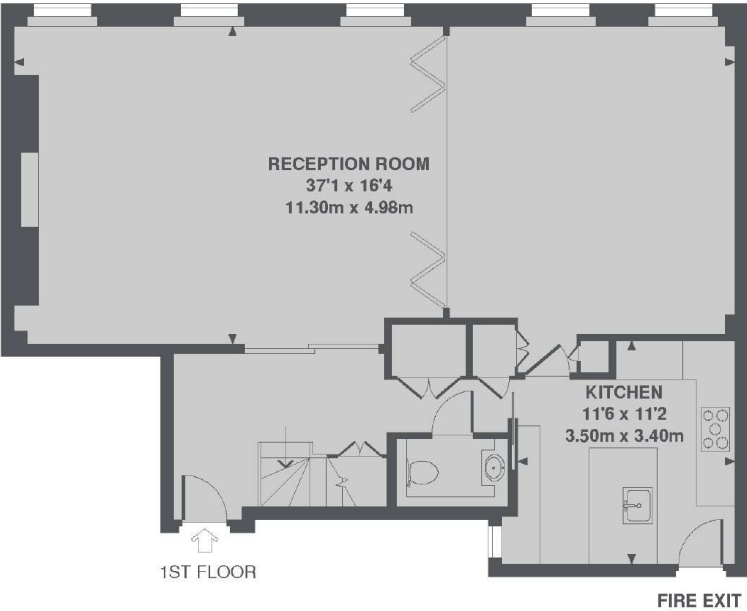
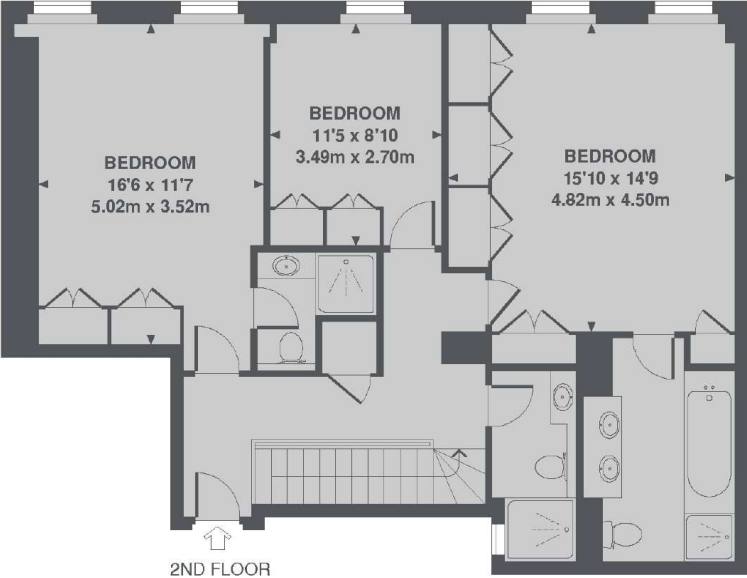


FEATURES

- 24 Hour Porter • Three Double Bedrooms • Three Bathrooms • Duplex • Recently Refurbished • Air Conditioning •



Upper Grosvenor Street, London, W1K



TOTAL APPROX. FLOOR AREA 1803 SQ. FT. (167.5 SQ. M.)