



# Vermeer Court

## 1 Rembrandt Close, E14

Asking Price £500,000

A superb 810sq ft 5th & 6th floor duplex 2 bedroom 2 bathroom top floor apartment in the London Yard development, a quiet riverside location on the Isle of Dogs. The apartment has been modernised throughout to an excellent standard.

**CHESTERTONS**





# Vermeer Court

## 1 Rembrandt Close, E14

- 810sq ft 5th & 6th (top) floor 2 bedroom 2 bathroom duplex apartment.
- South-facing balcony/terrace.
- Refurbished throughout to an excellent standard.
- Quiet riverside location.
- EWS1 compliant.





A superb 810sq ft 5th & 6th floor duplex 2 bedroom 2 bathroom top floor apartment in Vermeer Court in the London Yard development, a quiet riverside location on the Isle of Dogs. The apartment has been modernised internally to an excellent standard incorporating 2 new bathrooms, a new kitchen, & new wood flooring throughout. The apartment offers a generous South-facing balcony/terrace off the reception room, as well as direct river views from the bedrooms. Residents' parking permits are available.

London Yard is situated in a peaceful riverside location on the Eastern side of the Isle of Dogs, with its own beach, & by the Thames Path. Both Crossharbour & Island Gardens DLR stations are within 1km. Local amenities are also nearby.

<b>Tenure:</b>	Leasehold – 957 years remaining approx.
<b>Service Charge:</b>	£3,307pa approx
<b>Ground Rent:</b>	£40pa
<b>Local Authority:</b>	Tower Hamlets
<b>Council Tax Band:</b>	E

Score	Energy rating	Current	Potential
92+	A		
81-91	B		
69-80	C	78 C	78 C
55-68	D		
39-54	E		
21-38	F		
1-20	G		

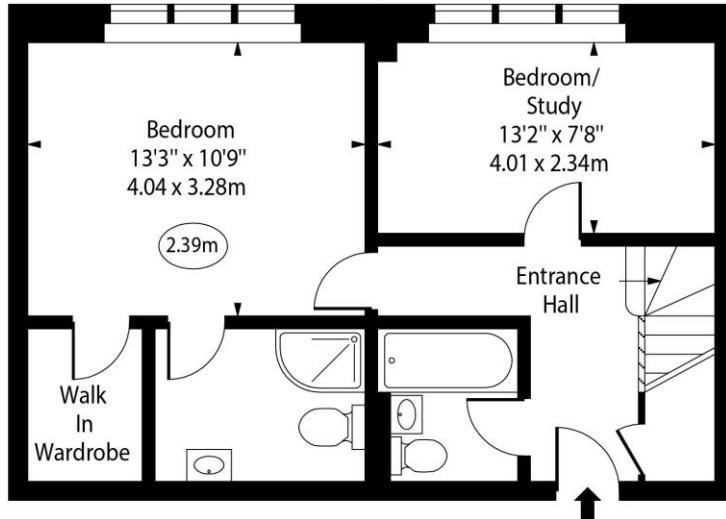
### *Chestertons Canary Wharf & Greenwich Sales*

Harbour Island  
 28 Harbour Exchange Square  
 London  
 E14 9GE  
[canarywharf@chestertons.co.uk](mailto:canarywharf@chestertons.co.uk)  
 020 7510 8300  
[chestertons.co.uk](http://chestertons.co.uk)

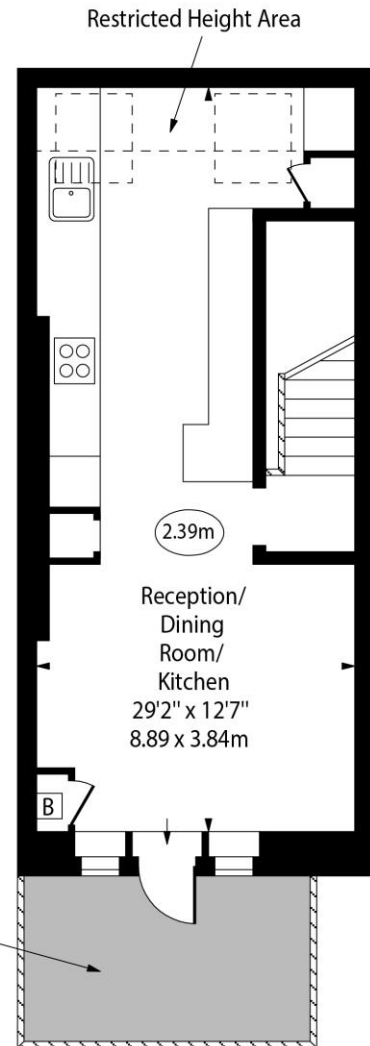
Vermeer Court,  
Rembrandt Close, E14



○ - Ceiling Height



Fifth Floor



Sixth Floor

Approx Gross Internal Area 810 Sq Ft - 75.25 Sq M

Approx. Floor Area Including Restricted Heights 840 Sq Ft - 78.04 Sq M

Every attempt has been made to ensure the accuracy of the floor plan shown.  
However, all measurements, fixtures, fittings, and data shown are approximate interpretations and  
for illustrative purposes only.

Measured according to the RICS IPMS 2. Not To Scale.

[www.goldlens.co.uk](http://www.goldlens.co.uk)

Ref. No. 028366K

