

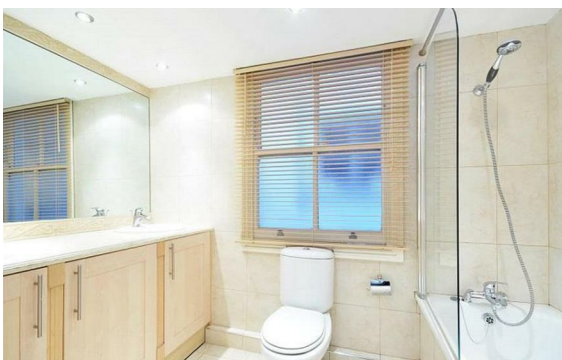


Cabbell Street, Marylebone, London, NW1

Rent £1,250 PCM

4 Bed | 2 Bath | 1 Reception

Please call us on 020 7724 2233 or email us info@newingtonstates.com to book a viewing.



60 Upper Montagu Street

London

W1H 1SN

020 7724 2233

info@newingtonstates.com

Spacious apartment opposite Regent's Park. The property features a bright reception room, a fully fitted kitchen with integrated appliances, and four well-proportioned bedrooms. The principal bedroom benefits from an en-suite bathroom, while a separate family bathroom serves the remaining bedrooms. High ceilings and modern finishes create a bright and comfortable living environment.

Ideally located close to Regent's Park and within easy reach of Baker Street Station and Marylebone Station, with excellent transport links and local amenities nearby.

EPC Rating: C

Energy Efficiency Rating: C

Agents Note: Whilst every care has been taken to prepare these particulars, they are for guidance purposes only. All measurements are approximate and are for general guidance purposes only and whilst every care has been taken to ensure their accuracy, they should not be relied upon and potential buyers/tenants are advised to recheck the measurements.

<http://www.newingtonstates.com>