



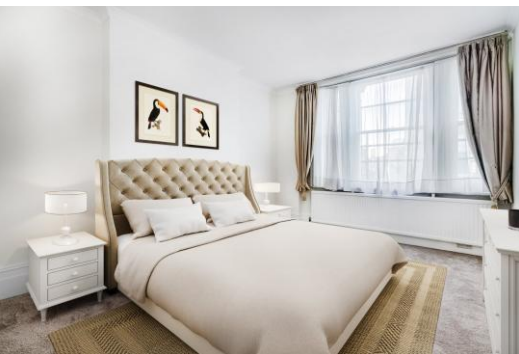
# Cope Place

Kensington, W8

£3,000 per month  
(£692.31 per week)

Professionally managed: Boasting an abundance of natural light, Comprises 2 double bedrooms, reception with separate kitchen, bathroom and pretty patio. Ideally located for Kensington High street amenities and the beautiful Holland Park.

**CHESTERTONS**



# Cope Place

## Kensington, W8

- A bright flat with a private entrance & pretty terrace
- 2 Bedrooms, 1 Bathroom, 1 Reception
- Great storage, located moments from Kensington High St
- Providing easy access to both Kensington, Earls Court and the A4 out to Heathrow

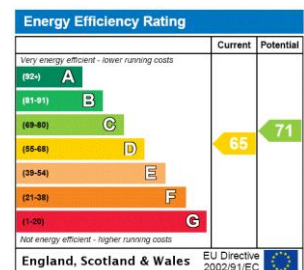


Professionally managed. A unique two double bedroom flat that benefits from its own entrance up to the first floor above a commercial premises.

The property has been recently redecorated and new carpets throughout. Benefits include separate kitchen with breakfast bench, reception/dining room, generous master bedroom with built in wardrobes, further double bedroom. Boasting an abundance of natural light and a large storage cupboard.

Ideally located for Kensington High street amenities and the beautiful Holland Park.

**Minimum Term:** 12 months  
**Deposit Required:** £3,461.54  
**Local Authority:** Royal Borough of Kensington & Chelsea  
**Council Tax Band:**  
**EPC Rating:** D  
**Unfurnished**

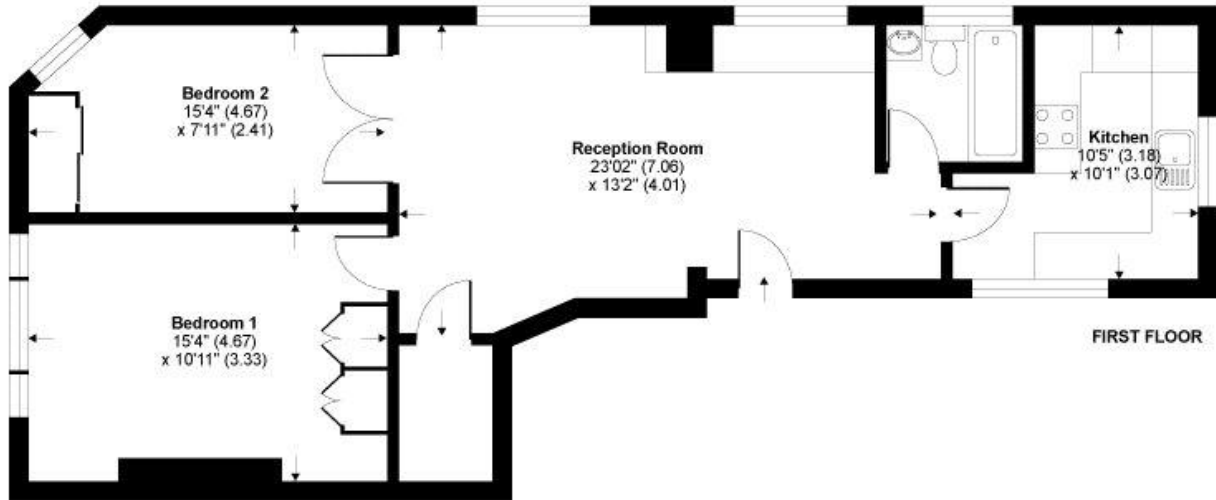


### Chestertons Kensington Lettings

116 Kensington High Street  
 Kensington  
 London  
 W8 7RW  
 kensingtonlettingsusers@chestertons.co.uk  
 02079377260  
 chestertons.co.uk

Additional tenant charges apply (fees apply to non-AST tenancies only)  
 Tenancy Agreement Fee: £300  
 References per Tenant/Guarantor: £60  
 Inventory check (approx. £100 – £250 inc. VAT)  
 chestertons.co.uk/property-to-rent/applicable-fees

# Cope Place, London, W8



**TOTAL GROSS INTERNAL FLOOR AREA 710 SQ FT 66.70 SQ METRES**

Whilst every attempt has been made to ensure the accuracy of the floor plan contained here, measurements of doors, windows and rooms are approximate and no responsibility is taken for any error, omission or misstatement. These plans are for representation purposes only as defined by RICS Code of Measuring Practice and should be used as such by any prospective purchaser. Specifically no guarantee is given on the total square footage of the property if quoted on this plan. Any figure given is for initial guidance only and should not be relied on as a basis of valuation.

Copyright nichecom.co.uk 2014 Produced for Chesterton Humberts REF : 581590

