



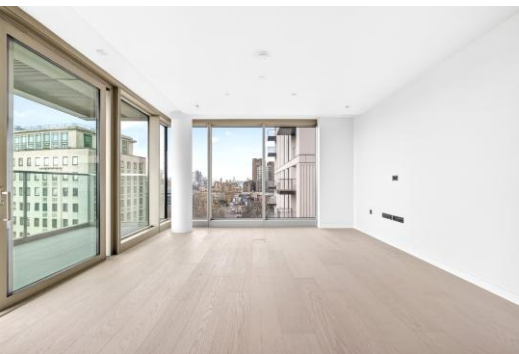
Belvedere Road

London, SE1

£5,150 per month
(£1,188.46 per week)

Brand new ultra-luxury 1-bed apartment on the 8th floor of Seven, Southbank Place (82 sqm). Stunning corner unit with floor-to-ceiling windows and direct views of The Shard. Finished to a high spec with Italian marble kitchen and premium flooring.

CHESTERTONS



Belvedere Road

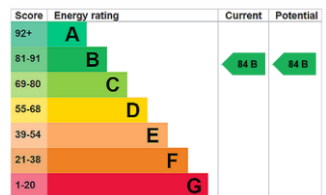
London, SE1

- Brand New Ultra Luxury 1bed 1bath
- 8th floor
- Located within the brand new block Seven part of Southbank place
- Swimming pool, gym & cinema
- Corner unit with floor to ceiling windows and direct view of The Shard
- 82 square meter massive 1bed



A newly built ultra-luxury one-bedroom, one-bathroom apartment set on the 8th floor of Seven, within the highly sought-after Southbank Place development. Covering an impressive 82 sqm, this stunning corner property boasts floor-to-ceiling windows with uninterrupted views of The Shard, filling the space with natural light and creating a striking atmosphere. Finished to an exceptional specification, the apartment includes a sleek Italian marble kitchen island and high-quality flooring throughout. Residents enjoy access to premium amenities such as a 24-hour concierge service, swimming pool, fully equipped gym, and private cinema. Perfectly located just moments from the London Eye and only a short 5-minute walk to Waterloo Station, providing excellent transport links across the city.

Minimum Term: 12 months
Deposit Required: £5,942.31
Local Authority: London Borough of Southwark
Council Tax Band:
EPC Rating: B
Unfurnished



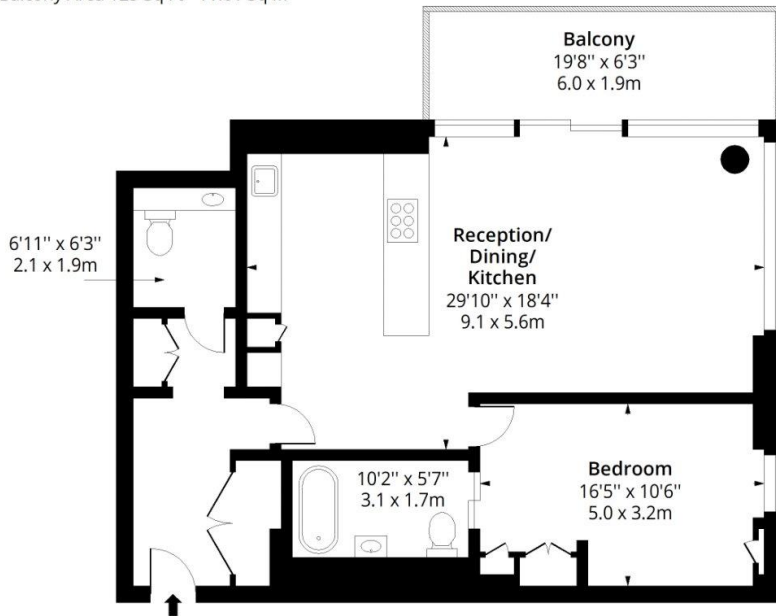
Chestertons Tower Bridge Lettings

220 Tower Bridge Road
 Tower Bridge
 London
 SE1 2UP
 towerbridgelettingsusers@chestertons.co.uk
 02073576911
 chestertons.co.uk

Additional tenant charges apply (fees apply to non-AST tenancies only)
 Tenancy Agreement Fee: £300
 References per Tenant/Guarantor: £60
 Inventory check (approx. £100 – £250 inc. VAT)
 chestertons.co.uk/property-to-rent/applicable-fees

Belvedere Road SE1

Approx. Gross Internal Area 925 Sq Ft - 85.93 Sq M
Approx. Gross Balcony Area 125 Sq Ft - 11.61 Sq M



Eighth Floor

Floor Area 925 Sq Ft - 85.93 Sq M



Measured according to RICS IPMS2. Floor plan is for illustrative purposes only and is not to scale. Every attempt has been made to ensure the accuracy of the floor plan shown, however all measurements, fixtures, fittings and data shown are an approximate interpretation for illustrative purposes only. 1 sq m = 10.76 sq feet.

lplus.com

Date: 1/4/2026

