



## Chestnut Close

Westfield, BA3 3UY

£268,950

Vendors comments - "I love my three-bedroom extended house because it has been our family home for the past 10 years. We bought it as a first-time purchase when we were a family of six, as its spacious layout perfectly suited our family's needs. It has provided comfort, room to grow, and many happy memories."

- Extended home
- Close to countryside
- Garden studio
- Driveway parking
- Garage in block
- Large living spaces

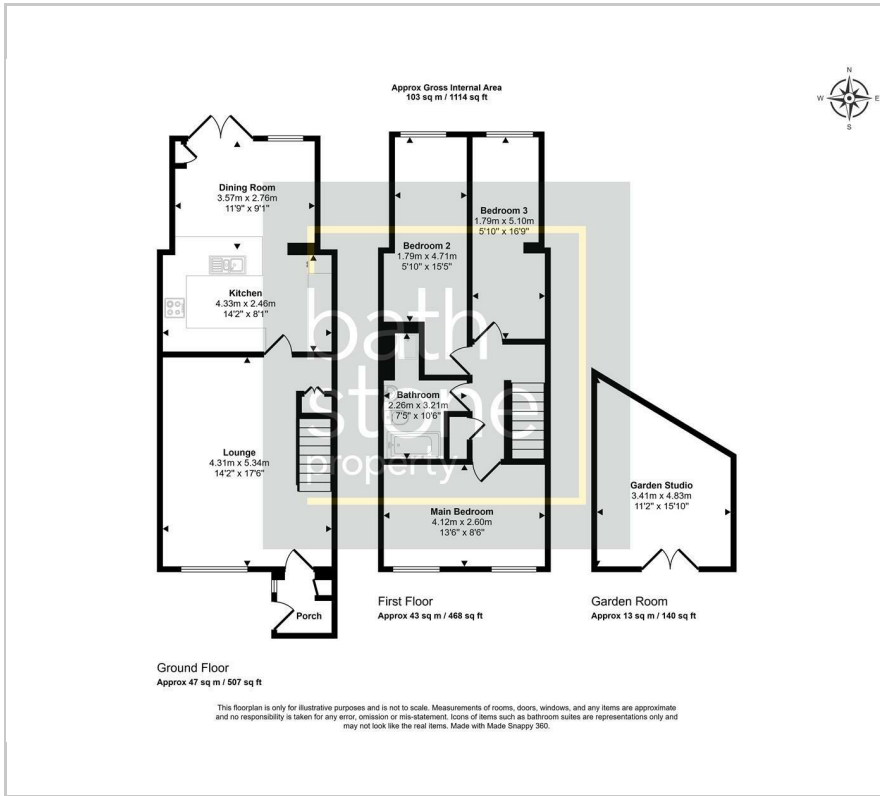
### Viewing

Please contact our Bath Stone Property (MSN) Office on 01761 360144

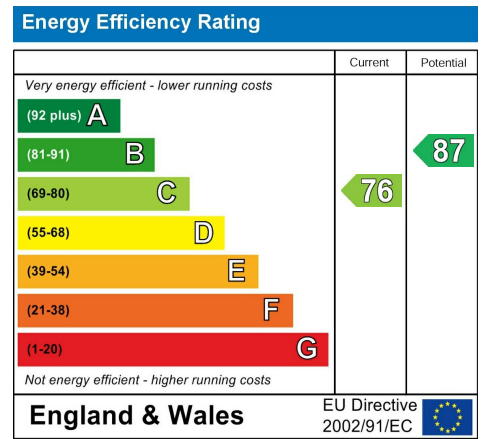
if you wish to arrange a viewing appointment for this property or require further information.



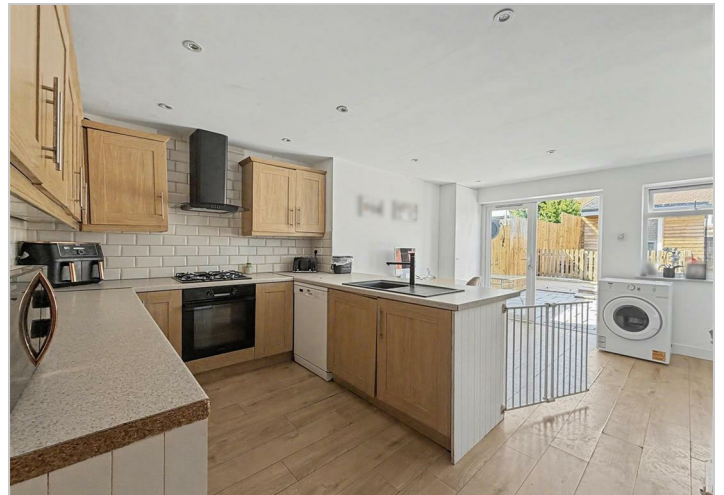
# Floor Plan



# Energy Efficiency Graph



Please give us Feedback



These particulars, whilst believed to be accurate are set out as a general outline only for guidance and do not constitute any part of an offer or contract. Intending purchasers should not rely on them as statements of representation of fact, but must satisfy themselves by inspection or otherwise as to their accuracy. No person in this firm's employment has the authority to make or give any representation or warranty in respect of the property.