



Bramble Lodge 12 Field Lane

Thorpe Willoughby, YO8 9FL

Offers In The Region Of £535,000

**** STUNNING EXECUTIVE HOME **** Nestled on the edge of the delightful village of Thorpe Willoughby, 'Bramble Lodge' presents an exceptional opportunity to acquire a modern detached house that boasts both elegance and functionality. This splendid property features four spacious bedrooms, making it ideal for families or those seeking extra space for guests or a home office. With three well-appointed bathrooms, morning routines and family life are made effortless.

As you enter, you are greeted by two inviting reception rooms, perfect for entertaining guests or enjoying quiet evenings with loved ones. The heart of the home is undoubtedly the breath-taking kitchen, which is designed to impress with its contemporary finishes and ample space for culinary creativity. The stunning interior throughout the house is a testament to modern living, combining style and elegance with comfort.

The property overlooks picturesque farmland, providing a serene backdrop that enhances the overall appeal. For those who enjoy the outdoors, excellent access to dog walks at Brayton Barff is just a stone's throw away, making it a perfect location for nature enthusiasts.

Parking is a breeze with space for up to four vehicles, thanks to the double garage and expansive driveway. This feature adds convenience and ease to daily life, ensuring that you and your guests can come and go without hassle.

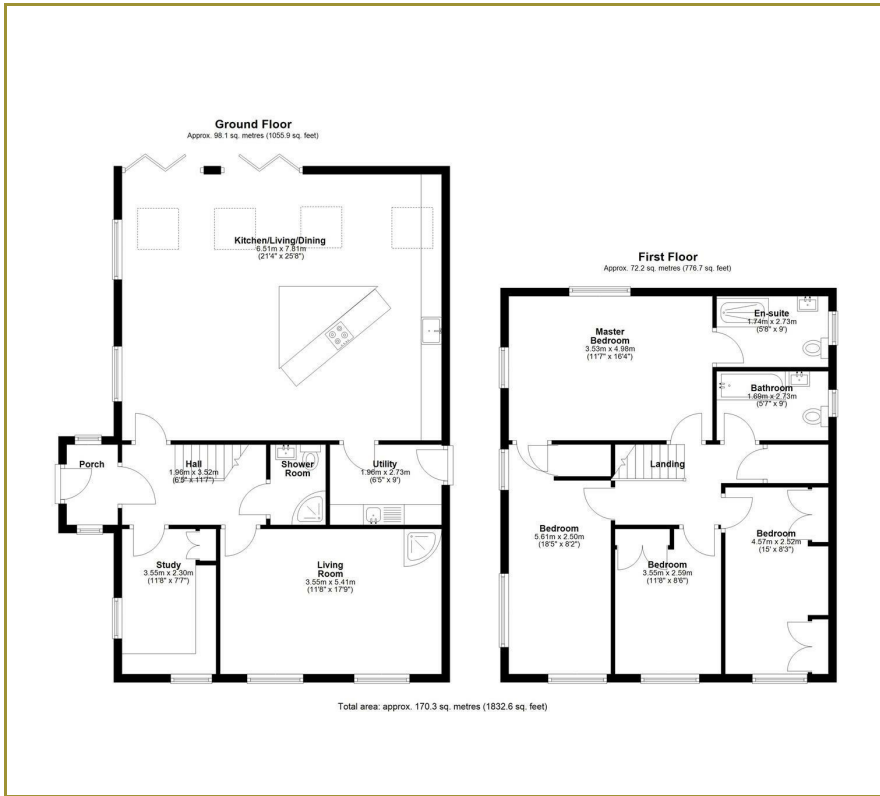
In summary, 'Bramble Lodge' is a remarkable detached house that offers a harmonious blend of modern living and rural charm. With its stunning interior, ample space, and excellent location, this property is a must-see for anyone looking to make a new home in Thorpe Willoughby.

- Modern Detached House
- Double Detached Garage
- 4 Double Bedrooms
- 3 Bathrooms
- **** WITH A STUNNING KITCHEN OF DREAMS ****
- Stunning Internally
- Gardens to All Sides
- External 'Gym Room' with Equipment (if required)
- Close to Fabulous Dog Walks at 'Brayton Barff'
- Solar Panels - Owned Outright

Please contact us on 01757 709457 if you wish to arrange a viewing appointment for this property or require further information.



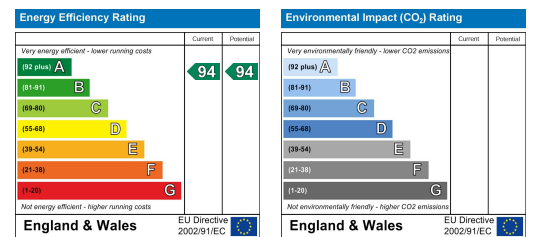
Floor Plan



Area Map



Energy Efficiency Graph



These particulars, whilst believed to be accurate are set out as a general outline only for guidance and do not constitute any part of an offer or contract. Intending purchasers should not rely on them as statements of representation of fact, but must satisfy themselves by inspection or otherwise as to their accuracy. No person in this firm's employment has the authority to make or give any representation or warranty in respect of the property.

Keith Taylor

56 Gowthorpe, Selby, North Yorkshire, YO8 4ET
Tel: 01757 709457 Email: sales@keithtaylorproperty.co.uk
www.keithtaylorproperties.co.uk