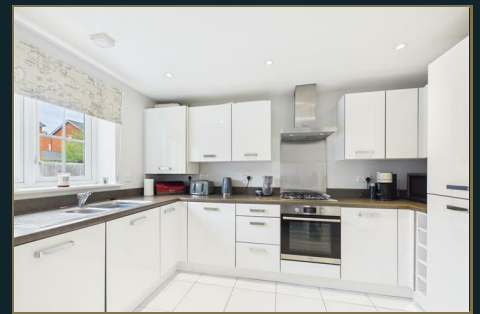




# PRESTIGE & VILLAGE

UK's finest properties



## PINCEY MEWS, TAKELEY, BISHOP'S STORTFORD, CM22 6FZ

A rare opportunity to purchase a 50% share of this immaculate three bedroom semi detached family home located in the village of Takeley. This super family home offers generous accommodation that includes a stunning kitchen with fitted appliances, large lounge/dining Room with doors to a large garden, ground floor cloakroom, three good size bedrooms and family bathroom. The Asking Price of £205,000 is for a 50% share of the property there is also a monthly rental charge of £589.56

ASKING PRICE £199,250

---

# PINCEY MEWS

TAKELEY, BISHOP'S STORTFORD, CM22 6FZ



- 50% Shared Equity
- Three Bedrooms
- Large Garden
- Village Location
- Stunning Kitchen
- Lounge Dining Room
- Beautiful Modern Home
- Large Bathroom

Entrance Hall 8'5 x 7'1 (2.57m x 2.16m)

17'2 x 7' (5.23m x 2.13m)

Kitchen

12' x 9'6 (3.66m x 2.90m)

Cloakroom

5'8 x 5' (1.73m x 1.52m)

Lounge/Dining Room

16'1 x 12'10 (4.90m x 3.91m)

Landing

large first floor landing (large first floor landing)

Master Bedroom

16'2 x 9'10 (4.93m x 3.00m)

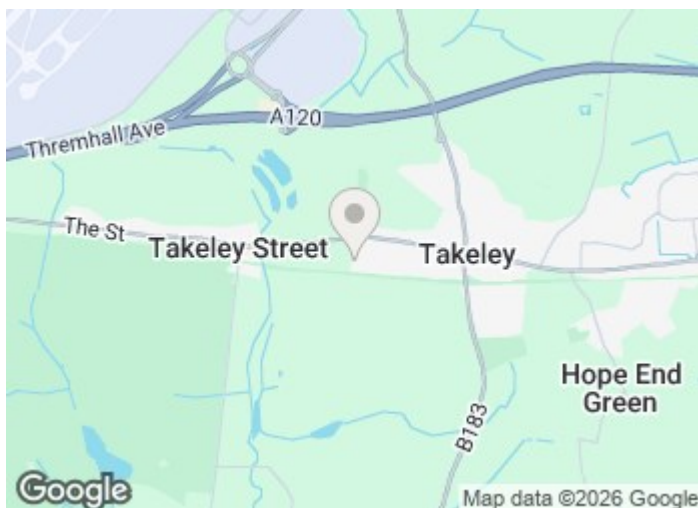
Bedroom Two

13'1 x 8'5 (3.99m x 2.57m)

Bedroom Three

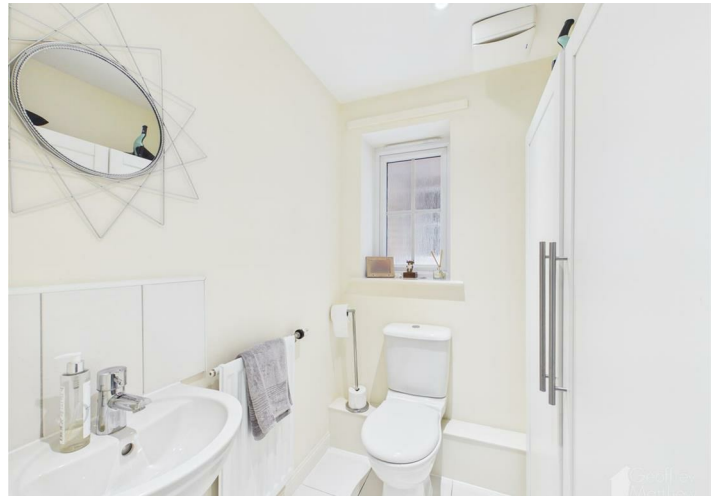
9' x 7'5 (2.74m x 2.26m)

Bathroom

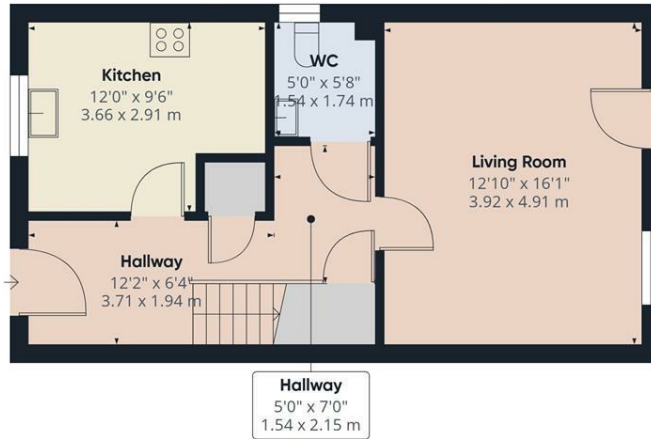


Directions

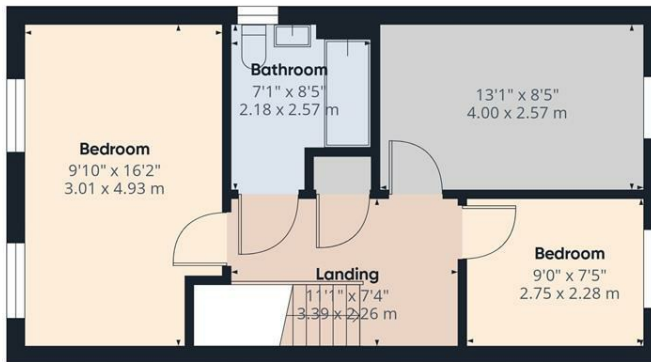
Band



# FLOOR PLAN



Floor 0



Floor 1



Approximate total area<sup>m</sup>  
942 ft<sup>2</sup>  
87.6 m<sup>2</sup>

(1) Excluding balconies and terraces

Calculations reference the RICS IPMS 3C standard. Measurements are approximate and not to scale. This floor plan is intended for illustration only.

GIRAFFE360



These particulars, whilst believed to be accurate are set out as a general outline only for guidance and do not constitute any part of an offer or contract. Intending purchasers should not rely on them as statements of representation of fact, but must satisfy themselves by inspection or otherwise as to their accuracy. No person in this firm's employment has the authority to make or give any representation or warranty in respect of the property.

