



Price
£365,000

Freehold

3x  1x  1x 

**Essella Road, Ashford,
Kent, TN24**

Wards
Helping you move forwards



Main features

- Garage with electricity
- Driveway parking for multiple cars
- Summer house with electricity
- Separate utility space
- A short distance to schools, Ashford International train station and town centre

Accommodation

GROUND FLOOR

- Hallway
- Porch
- Lounge: 14'2 x 12'6 (4.32m x 3.81m)
- Separate Toilet
- Kitchen Area: 17'8 x 11'4 (5.39m x 3.46m)
- Dining Area: 9'5 x 7'9 (2.87m x 2.36m)
- Utility Room: 10'4 4 x 4'2 (3.15m x 1.27m)

FIRST FLOOR

- Landing
- Bedroom 1: 14'1 x 12'6 (4.30m x 3.81m)
- Bedroom 2: 11'2 x 8'3 (3.41m x 2.52m)
- Bedroom 3: 8'2 x 6'5 (2.49m x 1.96m)
- Shower Room: 5'5 x 5'0 (1.65m x 1.53m)

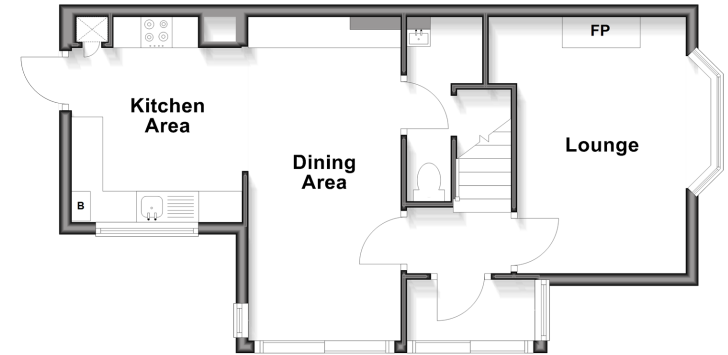
OUTBUILDING

- Garage: 18'5 x 13'8 (5.62m x 4.17m)

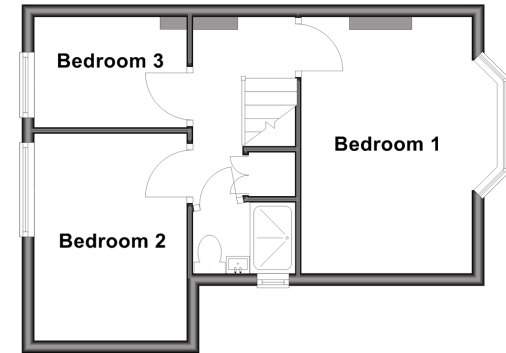
OUTSIDE

- Front & Rear Gardens
- Driveway
- Summer House: 10'1 x 8'3 (3.08m x 2.52m)

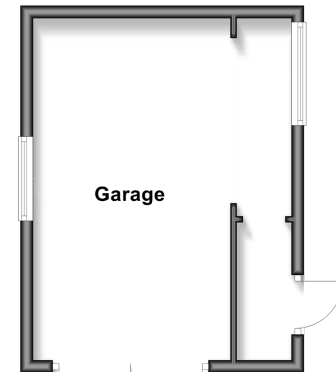
Ground Floor
Approx. 43.8 sq. metres (471.5 sq. feet)



First Floor
Approx. 32.1 sq. metres (345.1 sq. feet)



Outbuilding
Approx. 22.9 sq. metres (246.9 sq. feet)



Call Ashford - 01233 639531 ■ wardsof Kent.co.uk

- Legal advice should be taken to verify fixtures/fittings, planning, alterations and/or lease details
- Appliances & services are untested, dimensions are approximate and floor plans are not to scale



12220511/20260217/CA/RB