

Property ref: 69787

Garrard House, Reading, RG1 1NR

£1,150 PCM

HASLAM'S
Lettings



A stunning executive apartment, located in the heart of Reading town centre and moments from the mainline station.

Reading Borough Council tax band C.

Water supply: Mains

Drainage info: Mains

Electricity supply: Mains

Broadband/Mobile Info: Connections available. For an indication of specific speeds and supply of Broadband and Mobile, we advise applicants go to the Ofcom website Broadband and Mobile Coverage Checker.

Available 25/05/2026

- One large double bedroom
- Furnished to a high standard
- Modern fully fitted kitchen; No parking
- First floor position; EPC rating C
- £50 per month on top of the rent to cover the hot water and heating via communal boiler
- Ideal for commuters; Managed by HASLAM'S

*Fees For Assured Shorthold Tenancies: when you rent a property from us you will be required to pay a sum equivalent to one weeks' rent for a holding deposit. Upon successful application, this amount will be off set against your first months' rent. You will also be required to pay a security deposit equivalent to 5 weeks' rent which will be held and protected in line with Deposit legislation. For more information about our fees please visit: www.haslams.net
Fees for all other tenancies (Non Housing Act Tenancies / Company Lets): when you rent a property from us we will charge you a one-off fee per property. This charge is the equivalent of 15 days of the monthly rental charge (+VAT) with a minimum fee of £450 (inc.VAT) up to a maximum of £650 (inc.VAT). Other fees may apply depending on your circumstances.

0118 960 1055

lettings@haslams.net www.haslams.net

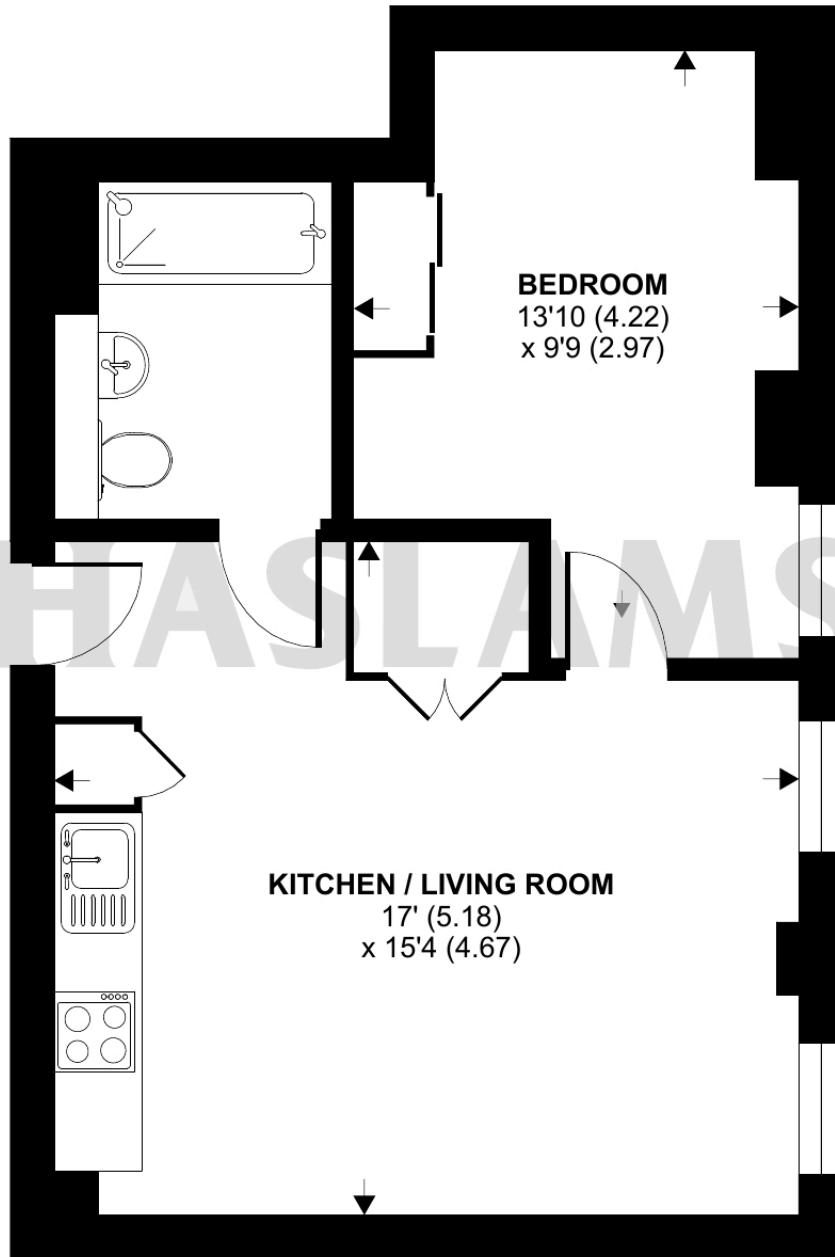
Haslams Estate Agents Ltd, 159 Friar Street, Reading, Berkshire, RG1 1HE



Garrard Street, Reading, RG1

Approximate Area = 416 sq ft / 38.6 sq m

For identification only - Not to scale



FIRST FLOOR



Floor plan produced in accordance with RICS Property Measurement 2nd Edition, Incorporating International Property Measurement Standards (IPMS2 Residential). © n̄che.com 2025. Produced for Haslam's. REF: 1242887