

Directions

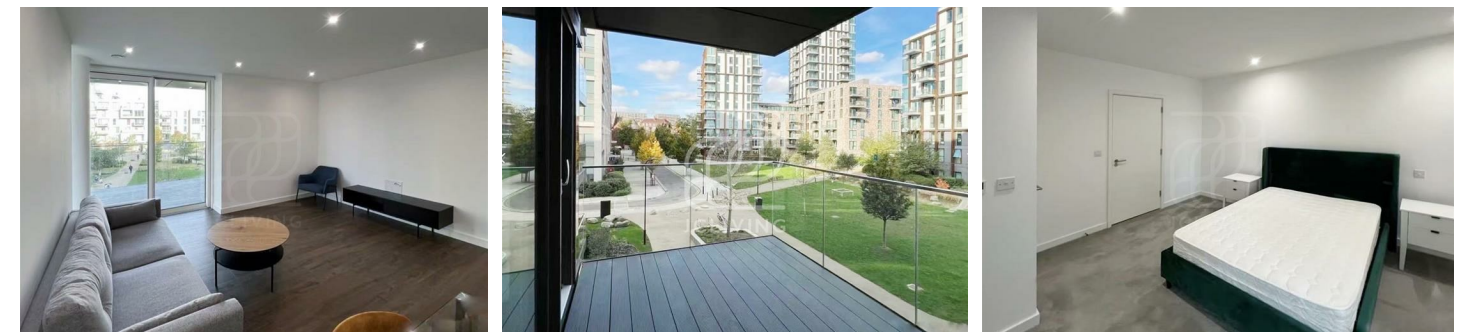
Viewings

Viewings by arrangement only. Call 02033696888 to make an appointment.

EPC Rating

B

| Energy Efficiency Rating | | Current | Potential |
|---|--|-------------------------|-----------|
| Very energy efficient - lower running costs | | | |
| (92 plus) A | | | |
| (81-91) B | | 84 | 84 |
| (69-80) C | | | |
| (55-68) D | | | |
| (39-54) E | | | |
| (21-38) F | | | |
| (1-20) G | | | |
| Not energy efficient - higher running costs | | | |
| England & Wales | | EU Directive 2002/91/EC | |



NZ125, Flat 188 Hartingtons Court, Coster Avenue, London, N4 2WQ

£808 Per Week

| | | |
|---------------------|---------------|-----------|
| B2.12 / 2 BED | 987 sq ft | 91.7 sqm |
| Apartment Area | 896 sq ft | 83.2 sqm |
| External Area | 91 sq ft | 8.5 sqm |
| Kitchen/Living Area | 16'5" x 22'0" | 5.0 x 6.7 |
| Bedroom 1 | 13'1" x 9'10" | 4.0 x 3.0 |
| Bedroom 2 | 13'5" x 13'5" | 4.1 x 4.1 |
| Balcony | 8'2" x 11'6" | 2.5 x 3.5 |

Flat 188 Hartingtons Court, Coster Avenue, London N4



*** Please quote reference JC2047 when contacting the office ***

Nestled on the charming Coster Avenue in London, this modern house offers a delightful blend of comfort and contemporary living. Built in 2021, the property spans an impressive 893 square feet, providing ample space for both relaxation and entertaining.

Upon entering, you are greeted by a well-appointed reception room that serves as the heart of the home, perfect for hosting guests or enjoying quiet evenings. The house features two generously sized bedrooms, each designed to be a peaceful retreat, ensuring restful nights and rejuvenating mornings.

With 2.5 bathrooms, this property is particularly advantageous for families or those who enjoy having extra space for guests. The modern fixtures and fittings throughout the bathrooms reflect a commitment to quality and style, enhancing the home's overall appeal.

The location on Coster Avenue is ideal, offering a blend of urban convenience and residential tranquility. Residents can enjoy easy access to local amenities, parks, and excellent transport links, making it a perfect choice for those who wish to experience the vibrant lifestyle that London has to offer.



Council Tax Band:

