

Property ref: 84052

# Osprey House, Reading, RG2 0PR

£1,250 PCM



A modern one bedroom first floor apartment situated in the sought-after Kennet Island development, ideal for a professional couple.

- One double bedroom with fitted wardrobe

Reading Borough Council tax band C.

Water supply: Mains

Drainage info: Mains

Electricity supply: Mains

Broadband/Mobile Info: Connections available. For an indication of specific speeds and supply of Broadband and Mobile, we advise applicants go to the Ofcom website Broadband and Mobile Coverage Checker.

- Fully fitted kitchen with Bosch appliances
- Allocated parking; Electric heating
- Close to local amenities and the M4
- Furnished; EPC rating B
- Managed by HASLAMs

**Available 28/06/2026**

\*Fees For Assured Shorthold Tenancies: when you rent a property from us you will be required to pay a sum equivalent to one weeks' rent for a holding deposit. Upon successful application, this amount will be off set against your first months' rent. You will also be required to pay a security deposit equivalent to 5 weeks' rent which will be held and protected in line with Deposit legislation. For more information about our fees please visit: [www.haslams.net](http://www.haslams.net)  
Fees for all other tenancies (Non Housing Act Tenancies / Company Lets): when you rent a property from us we will charge you a one-off fee per property. This charge is the equivalent of 15 days of the monthly rental charge (+VAT) with a minimum fee of £450 (inc.VAT) up to a maximum of £650 (inc.VAT). Other fees may apply depending on your circumstances.

---

**0118 960 1055**

**[lettings@haslams.net](mailto:lettings@haslams.net) [www.haslams.net](http://www.haslams.net)**

**Haslams Estate Agents Ltd, 159 Friar Street, Reading, Berkshire, RG1 1HE**

---



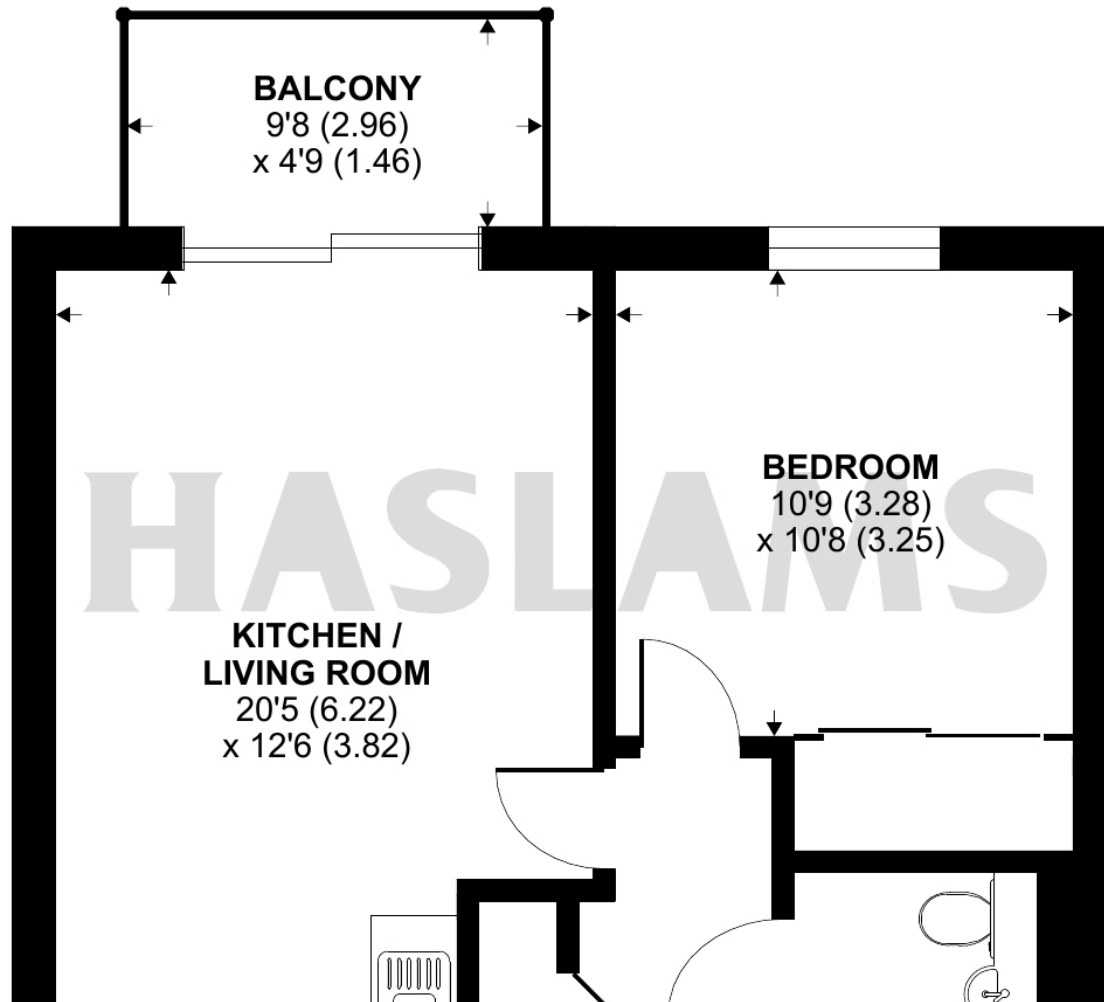


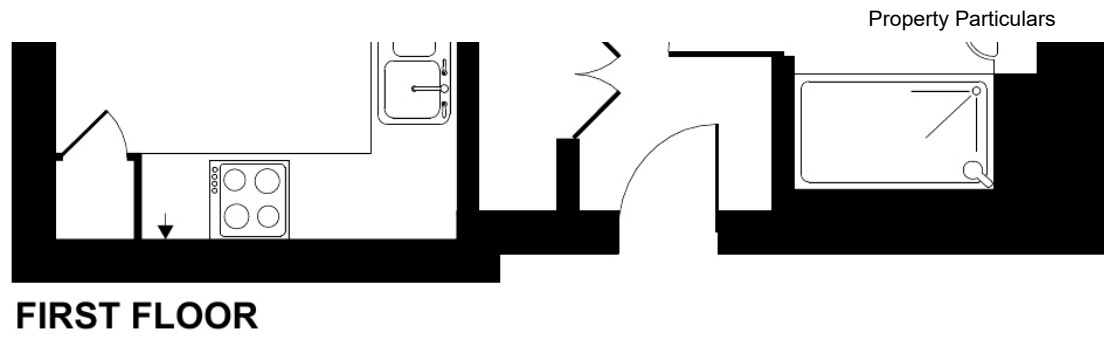


# Bedwyn Mews, Reading, RG2

Approximate Area = 503 sq ft / 46.7 sq m

For identification only - Not to scale





 Floor plan produced in accordance with RICS Property Measurement 2nd Edition, Incorporating International Property Measurement Standards (IPMS2 Residential). © n7checom 2025. Produced for Haslams. REF: 1306202