



Guide Price
£280,000

Freehold

3x  1x  2x 

**Cherry Waye, Eythorne,
Dover, Kent, CT15**

OVER 60?

Secure this property
for up to **59% less!**

Wards
Helping you move forwards



Main features

- **No onward chain, meaning this could be yours sooner than you think**
- **Popular village location**
- **Garage and driveway parking for several vehicles**
- **Ideal property for a first-time buyer or a growing family**
- **Excellent transport links with easy access to the A256 & A2**

Accommodation

GROUND FLOOR

Entrance Hallway
 Kitchen/Breakfast Room : 14'11 x 13'2 (4.55m x 4.02m)
 Lounge : 15'0 x 11'2 (4.58m x 3.41m)
 Conservatory : 13'6 x 8'8 (4.12m x 2.64m)

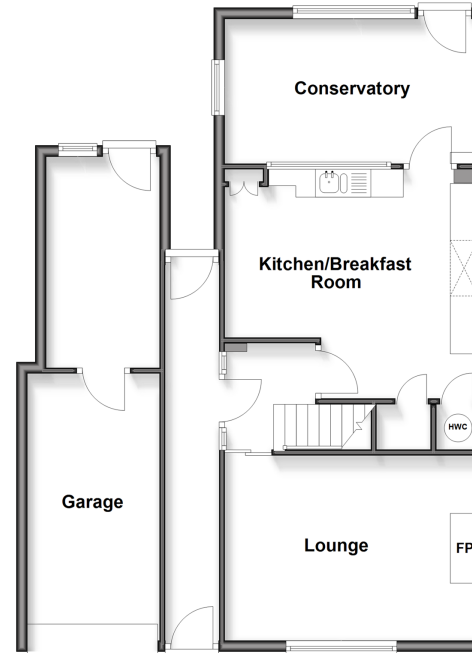
FIRST FLOOR

Landing
 Bedroom 1 : 12'8 x 11'1 (3.86m x 3.38m)
 Bedroom 2 : 9'9 x 8'8 (2.97m x 2.64m)
 Bedroom 3 : 9'10 x 5'11 (3.00m x 1.80m)
 Bathroom

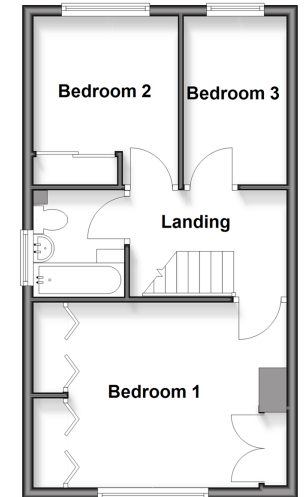
OUTSIDE

Front Garden
 Rear Garden
 Garage
 Off Road Parking

Ground Floor
 Approx. 83.2 sq. metres (895.7 sq. feet)



First Floor
 Approx. 38.8 sq. metres (417.2 sq. feet)



Call Dover - 01304 214876 ■ wardsof Kent.co.uk

■ Legal advice should be taken to verify fixtures/fittings, planning, alterations and/or lease details
 ■ Through a Homewise Home For Life Plan people aged 60+ can secure this property for up to 59% less, by purchasing a Lifetime Lease

■ Appliances & services are untested, dimensions are approximate and floor plans are not to scale



10736191/20260304/TE/CDH