



Athelington Road | Horham | Eye | IP21 5EH

Guide Price **£375,000**

DURRANTS
SINCE 1853

Key features

- Detached house
- Integral garage and car port
- Enormous potential to update
- No Forward Chain
- First time on the market
- Backing on to farmland
- Edge of village location
- Spacious accommodation
- 3 double bedrooms
- Off-road parking

Description

An established detached three bedroom house backing on to fields offering enormous potential to update and with no forward chain.



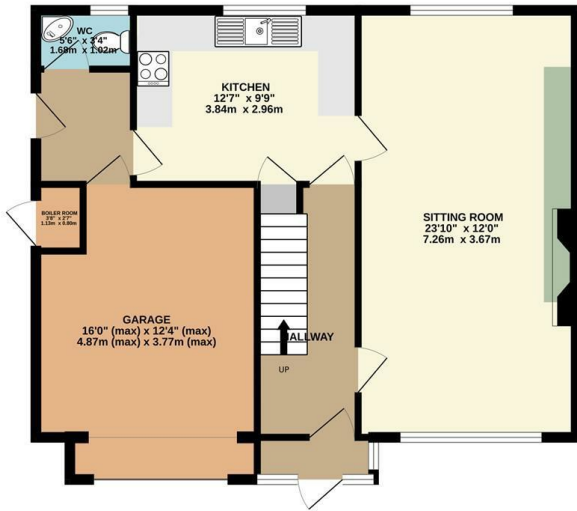
Directions



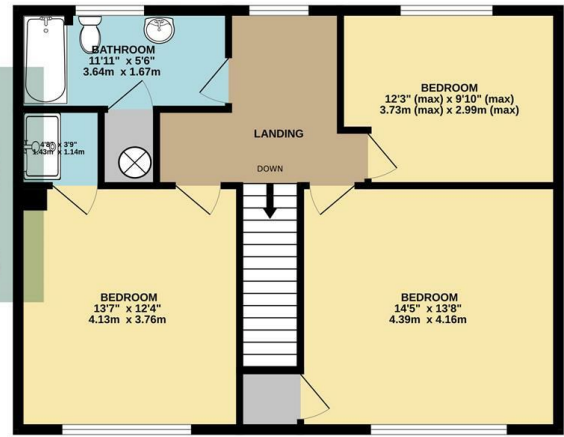


Floor plans

GROUND FLOOR
744 sq.ft. (69.1 sq.m.) approx.

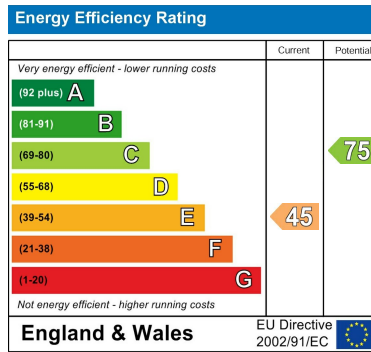


1ST FLOOR
696 sq.ft. (64.7 sq.m.) approx.



TOTAL FLOOR AREA: 1440 sq.ft. (133.7 sq.m.) approx.

Whilst every attempt has been made to ensure the accuracy of the floorplan contained here, measurements of doors, windows, rooms and any other items are approximate and no responsibility is taken for any error, omission or mis-statement. This plan is for illustrative purposes only and should be used as such by any prospective purchaser. The services, systems and appliances shown have not been tested and no guarantee as to their operability or efficiency can be given.
Made with Metropix ©2025



2b Market Hill
Diss
Norfolk
IP22 4WH
01379 642233

diss@durrants.com
<https://durrants.com/>