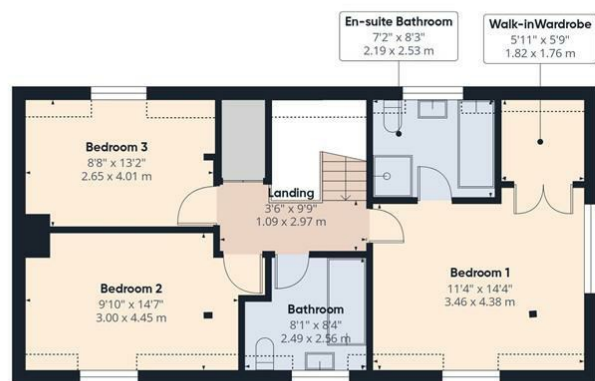


Floor 1



Floor 2



Approximate total area⁽¹⁾

1597 ft²
148.4 m²

Reduced headroom

61 ft²
5.7 m²

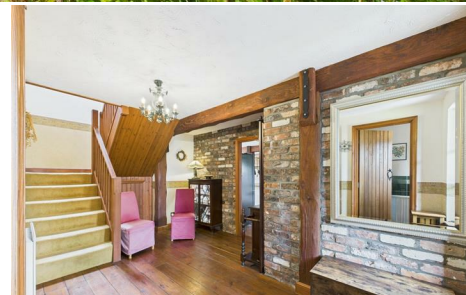
(1) Excluding balconies and terraces

Reduced headroom

Below 5 ft/1.5 m

Calculations reference the RICS IPMS 3C standard. Measurements are approximate and not to scale. This floor plan is intended for illustration only.

GIRAFFE360

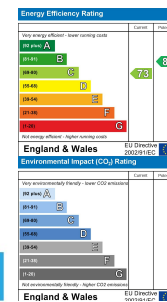


Caxton House, 28 Ferry Road, Kidwelly, Carmarthenshire, SA17 5BJ

- Timber Framed, Individually Designed Detached Property • Three Bedrooms
- Lounge With Inglenook & Study Area
- Ample Parking To the Front
- Historic Town Location
- Cloakroom, Bathroom & En-suite Bath & Shower Room
- Enclosed Rear Garden With An Array Of Flowering Borders & Lawn
- TAX BAND F. EPC RATING C.

£395,000

COMPUTER-LINKED OFFICES THROUGHOUT WEST WALES and Associated office in Mayfair, London





Standing proudly on Ferry Road in the historic town of Kidwelly, this striking, individually designed, detached three-bedroom house, built in 1994, offers a perfect blend of comfort and convenience. With three spacious bedrooms, this property is ideal for families or those seeking extra space. The two well-proportioned reception rooms provide ample room for relaxation and entertaining, making it a wonderful home for gatherings with friends and family. The well-appointed garden is a true delight, offering a glorious outdoor space for gardening enthusiasts or simply enjoying the fresh air. The house is accessed by a sweeping driveway, affording ample parking space for a variety of vehicles —a rare find that adds to the property's appeal. The location is particularly convenient, providing easy access to local amenities and transport links, making daily life effortless. This well-presented home is ready for you to move in and make it your own. Whether you are looking for a family home or a peaceful retreat, this property on Ferry Road is sure to impress. Don't miss the opportunity to view this lovely house. EPC RATING C. TAX BAND F

The ancient township of Kidwelly, renowned for its Norman castle, is conveniently situated midway between Carmarthen and Llanelli. Kidwelly offers a range of amenities, including schools and shops. There is also a railway station, making Cardiff, Swansea, and other destinations easily accessible. Local leisure facilities include golf courses at Glyn Abbey and Ashburnham, the nearby Pembrey country park, and horse racing at Ffos Las.



..AGENTS VIEWING NOTES

HALLWAY

CLOAKROOM

LOUNGE

STUDY AREA

KITCHEN/BREAKFAST/DINER

UTILITY ROOM

LANDING

BATHROOM

STORAGE CUPBOARD

BEDROOM 1

EN-SUITE BATH & SHOWER ROOM

WALK-IN WARDROBE

BEDROOM 2

BEDROOM 3



DIRECTIONS

See our website www.westwalesproperties.co.uk in our TV channel to view our location videos about the area.