



## Holmdale Road, NW6

£550,000

A very special one bedroom Victorian conversion spanning over 670 sq ft, bursting with period charm, featuring two private balconies, elegant original details, and a cleverly designed office space. Complete with fitted wardrobes, access to a communal garden, and offered with no onward chain.

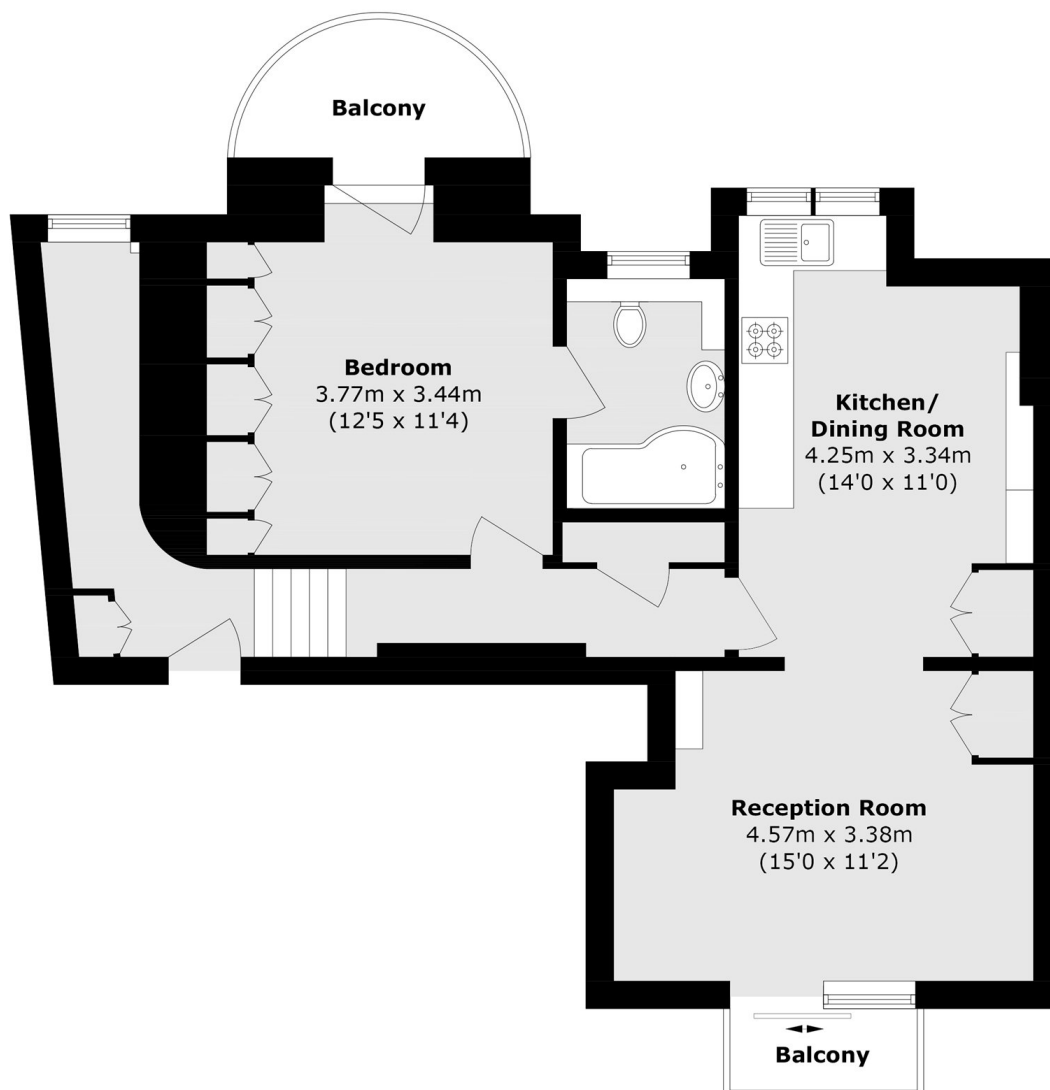
Holmdale Road is a residential street which provides easy access to trendy West End Lane with its array of shops, bars and restaurants including the versatile transport links that West Hampstead is renown for (Thameslink, overground and Jubilee Line).

### Features

One Double Bedroom  
Private Terrace  
Communal Garden  
Ample Storage

Close To Station

Holmdale Road,  
London, NW6



Total area (approx.): 62.7 sq. m (674.9 sq. ft)

Balconies (approx.): 5.5 sq. m (59.2 sq. ft)