



Connells

Pound Lane
Fordington Dorchester



Property Description

With No Onward Chain and situated in the ever-popular Fordington area of Dorchester lies this two bedroom detached home. The property enjoys far reaching views from its quiet position as well as benefiting from workshop and ample storage space. The property itself comprises two double bedrooms and family bathroom on the first floor with a kitchen-diner and snug lounge on the ground floor.

Ground Floor

Entrance Porch

A single glazed front door to the side aspect leads into the entrance porch with a single glazed window to the front aspect.

Kitchen / Dining Room

12' 9" x 11' 9" (3.89m x 3.58m)

The entrance porch leads into the kitchen / dining room with a range of wall and base units with worksurfaces over, a sink and drainer, an electric oven and hob with a cookerhood over, plumbing for a washing machine, the gas combi boiler, a radiator, a telephone socket, double glazed windows to the front, rear and side aspects. Doors lead to the lounge and to the hallway with stairs to the first floor landing.

Lounge

13' 1" x 12' 1" (3.99m x 3.68m)

A door leads from the kitchen / dining room into the lounge with a double glazed window to the front aspect, a radiator, a television aerial socket, a woodburner in an open fireplace, a double glazed window to the side aspect and a brickwork feature wall.

Inner Hallway

A door leads into the entrance hallway from the kitchen / dining room from where stairs lead up to the first floor landing.

First Floor

First Floor Landing

Stairs lead up from the ground floor to the first floor landing with a double glazed window to the rear aspect and doors to the bathroom and both bedrooms.

Bedroom 1

12' 1" x 11' 11" (3.68m x 3.63m)

A door leads from the first floor landing into bedroom 1 with double glazed windows to the front and side aspects, a radiator, built in wardrobes and a cupboard.

Bedroom 2

12' 1" x 7' 1" (3.68m x 2.16m)

A door leads from the first floor landing into bedroom 2 with a double glazed window to the front aspect and a radiator.

Bathroom

A door leads from the first floor landing into the part tiled bathroom with a WC, a wash hand basin, a bath with a shower above, a radiator, underfloor heating, an extractor fan and a double glazed window to the side aspect.

Outside Space

Basement Workshop

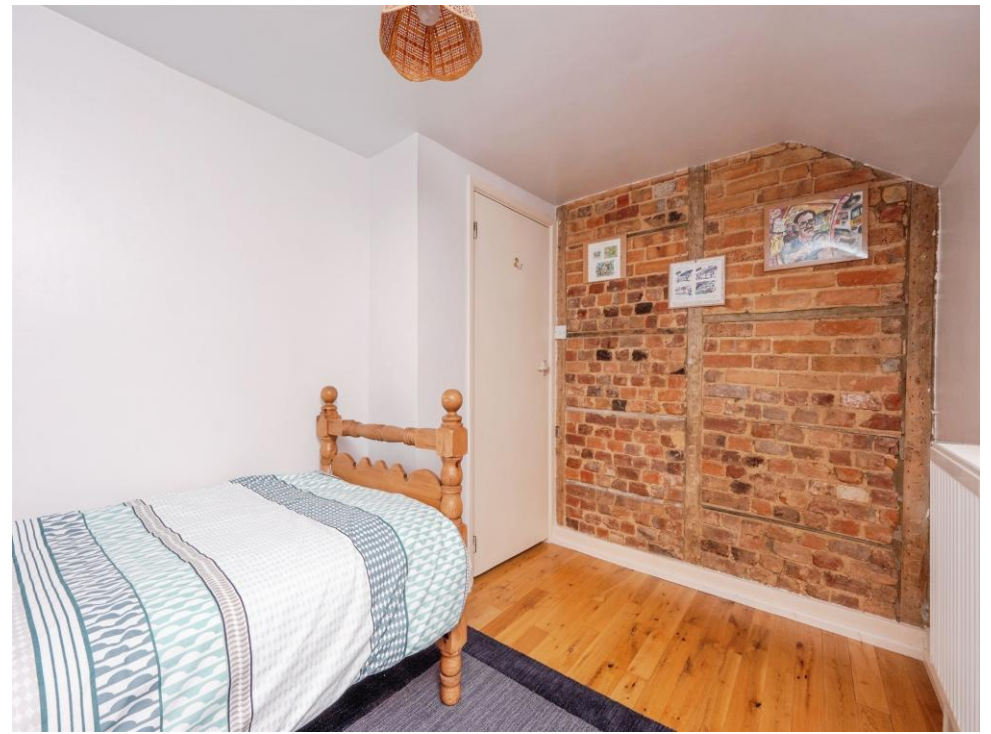
8' 8" x 11' 4" (2.64m x 3.45m)

An external door leads into the basement workshop with a window for natural light.

Garden

The garden is laid to a patio and benefits from an outside tap and a storage shed of solid construction adjacent to the house.





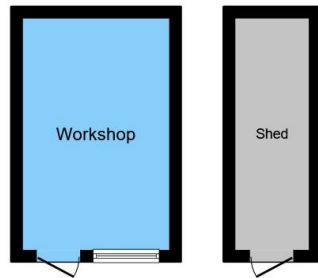




Ground Floor



First Floor



Outbuilding



This floor plan is for illustrative purposes only. It is not drawn to scale. Any measurements, floor areas (including any total floor area), openings and orientation are approximate. No details are guaranteed, they cannot be relied upon for any purpose and they do not form part of any agreement. No liability is taken for any error, omission or misstatement. A party must rely upon its own inspection(s). Powered by www.focalagent.com

To view this property please contact Connells on

T 01305 266 755
E Dorchester@connells.co.uk

3 High West Street
DORCHESTER DT1 1UH

EPC Rating: E Council Tax
Band: C

Tenure: Freehold

view this property online connells.co.uk/Property/DCH308987



1. MONEY LAUNDERING REGULATIONS Intending purchasers will be asked to produce identification documentation at a later stage and we would ask for your co-operation in order that there will be no delay in agreeing the sale. 2. These particulars do not constitute part or all of an offer or contract. 3. The measurements indicated are supplied for guidance only and as such must be considered incorrect. Potential buyers are advised to recheck measurements before committing to any expense. 4. We have not tested any apparatus, equipment, fixtures, fittings or services and it is in the buyers interest to check the working condition of any appliances.

Connells Residential is registered in England and Wales under company number 1489613, Registered Office is Cumbria House, 16-20 Hockliffe Street, Leighton Buzzard, Bedfordshire, LU7 1GN. VAT Registration Number is 500 2481 05.

See all our properties at www.connells.co.uk | www.rightmove.co.uk | www.zoopla.co.uk

Property Ref: DCH308987 - 0010