



Connells

Westerly House Rectory Lane
Houghton Conquest Bedford

Westerly House Rectory Lane Houghton Conquest Bedford MK45 3LD

for sale
£800,000



Property Description

Nestled in the desirable village of Houghton Conquest, this impressive five bedroom detached house offers a perfect blend of space and comfort. Boasting a generous layout ideal for family life, the property features a spacious living room, a modern kitchen/diner, and a large garden perfect for outdoor entertaining.

Adding to its appeal, the house includes a integrated garage, providing secure parking and additional storage. The property is also equipped with solar panels, significantly reducing energy costs and promoting sustainable living.

Located in a sought after area of Houghton Conquest, this home combines rural charm with convenient access to local amenities and transport links. Don't miss the opportunity to make this your dream family home.

Entrance / Hallway

Spacious hallway, glazed front door with full length window to the side. Access to kitchen, living room and cloakroom, radiator. Stairs rising to the first floor, Under stairs storage cupboard.

Cloak Room

Double glazed window, low level wc, hand wash basin with vanity storage.

Living Room

21' 4" x 16' 5" (6.50m x 5.00m)

Double glazed windows to front aspect, two radiators, feature fireplace.

Kitchen/ Diner

12' 3" x 10' 2" (3.73m x 3.10m)

Double glazed window, steel sink drainer, wall to base fitted units, extractor fan, electric hob, integrated oven, plumbing for dishwasher, space for refrigerator, radiator.

Utility Room

Window to lobby area, wall and base fitted units, stainless steel sink with drainer, plumbing for washing machine, space for tumble dryer.

Conservatory

Brick base conservatory, with double glazed windows, giving panoramic views of the garden, electricity and light, patio doors to garden. Patio doors to dining room.

Dining Room

13' 8" x 11' 2" (4.17m x 3.40m)

Access to the conservatory via patio doors, radiator.

Lobby Area

Double glazed windows facing the garden, glazed door to garden, access to utility room, additional storage rooms. Access to office which has two double glazed windows and radiator.

First Floor

Landing

Access to bedrooms and bathroom via two staircases.

Bedroom 1

23' 4" x 12' 2" (7.11m x 3.71m)

Double glazed windows, built in wardrobes, radiators

En Suite

Double glazed window, shower, bath, hand wash basin, low level wc, radiator.

Bedroom 2

12' x 11' 5" (3.66m x 3.48m)

Double glazed window, built in wardrobes, radiator.

Bedroom 3

16' 1" x 12' 9" (4.90m x 3.89m)

Double glazed window, built in wardrobes, radiator.

Bedroom 4

10' 1" x 9' 5" (3.07m x 2.87m)

Double glazed window, radiator.

Bedroom 5

9' 2" x 8' 9" (2.79m x 2.67m)

Double glazed window, built in wardrobe, radiator.

Bathroom

Double glazed window, panelled bath with shower overhead, low level wc, hand wash basin with vanity storage, radiator.

Outside

Garage

Up and over door.

Front Garden

Block paved driveway and path to side access, lawn area with neat flower bed borders, mature privacy hedge.

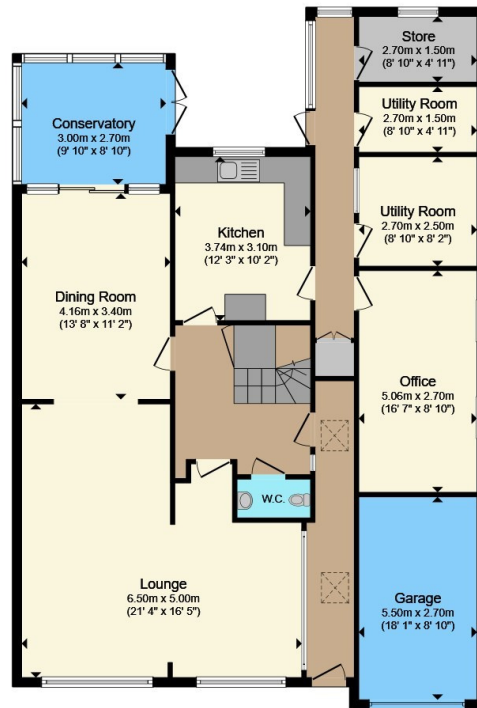
Rear Garden

Neatly presented lawn, paved patio areas, brick built barbecue, flower bed borders, side gate access.

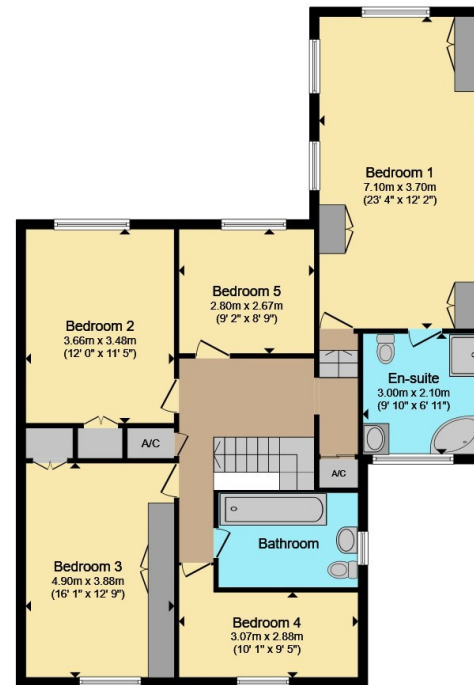








Ground Floor



First Floor

Total floor area 254.1 m² (2,735 sq.ft.) approx

This floor plan is for illustrative purposes only. It is not drawn to scale. Any measurements, floor areas (including any total floor area), openings and orientation are approximate. No details are guaranteed, they cannot be relied upon for any purpose and they do not form part of any agreement. No liability is taken for any error, omission or misstatement. A party must rely upon its own inspection(s). Powered by www.propertybox.io



To view this property please contact Connells on

T 01525 712 271
E flitwick@connells.co.uk

Unit 9 Russell Centre Coniston Road Flitwick
 BEDFORD MK45 1QY

EPC Rating: D Council Tax
 Band: F

Tenure: Freehold

view this property online connells.co.uk/Property/FLI305278



1. MONEY LAUNDERING REGULATIONS Intending purchasers will be asked to produce identification documentation at a later stage and we would ask for your co-operation in order that there will be no delay in agreeing the sale. 2. These particulars do not constitute part or all of an offer or contract. 3. The measurements indicated are supplied for guidance only and as such must be considered incorrect. Potential buyers are advised to recheck measurements before committing to any expense. 4. We have not tested any apparatus, equipment, fixtures, fittings or services and it is in the buyers interest to check the working condition of any appliances.

Connells Residential is registered in England and Wales under company number 1489613, Registered Office is Cumbria House, 16-20 Hockliffe Street, Leighton Buzzard, Bedfordshire, LU7 1GN. VAT Registration Number is 500 2481 05.

See all our properties at www.connells.co.uk | www.rightmove.co.uk | www.zoopla.co.uk

Property Ref: FLI305278 - 0006