



Rivermead Close, TW11

£699,950

A sought-after two bedroom, ground floor apartment set in a prime location within Rivermead Close. This property is situated within a gated development and benefits from a private garden and private allocated parking and concierge.

Rivermead Close is located 0.4 miles away from the River Thames as well as great local pubs, The Lensbury Hotel and Spa, the High Street and the station is just under a mile away.

Features

- Gated Development
- Concierge
- Long Lease
- Two En-Suite
- Two Double Bedrooms
- Guest WC

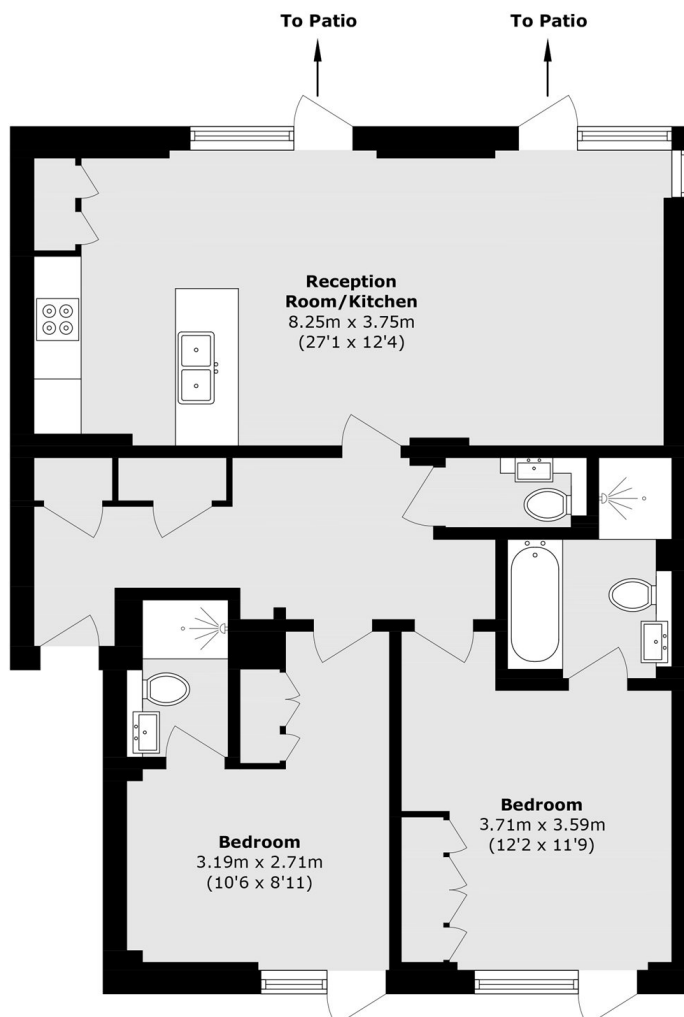


Rivermead Close, TW11

The apartment features two generously sized double bedrooms, each with its own en-suite bathroom, along with a separate cloakroom/WC accessed from the hallway. There are two dedicated utility and storage areas, as well as a private patio garden that is south-west facing. The open-plan kitchen and living area benefits from direct access to the garden, whilst both bedrooms are good sized double bedrooms with en-suite bathrooms and built-in wardrobes.



Rivermead Close, Teddington, TW11



Total area (approx.): 79.7 sq. m (857.8 sq. ft)

Dexters

Teddington
61 High Street
Teddington
TW11 8HA
Sales
020 8288 8288

Energy Rating: B. We aim to make our particulars both accurate and reliable. However they are not guaranteed; nor do they form part of an offer or contract. If you require clarification on any points then please contact us, especially if you're traveling some distance to view. Please note that appliances and heating systems have not been tested and therefore no warranties can be given as to their good working order.

 **RICS** | Regulated
Estate Agent
and Letting Agent

[dexters.co.uk](https://www.dexters.co.uk)