



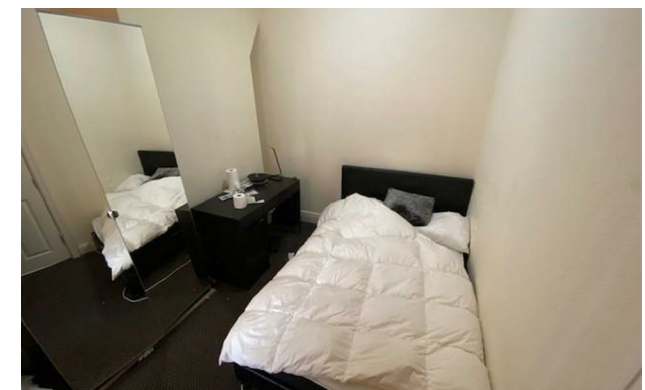
Jordan fishwick

56 Whitby Road, M14 6QL
Guide Price £1,994 Per Calendar Month



Whitby Road Fallowfield M14 6QL

£1,994 Per Calendar Month



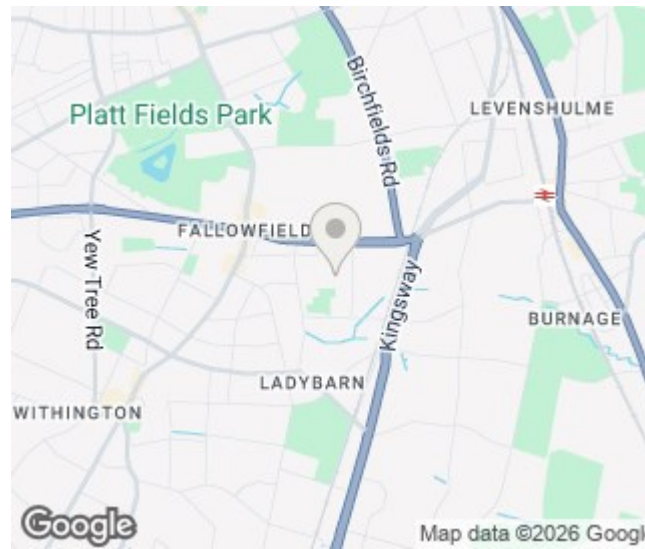
The Property


*** AVAILABLE 1st JULY 2026 *** £115.00 PPPW *** STUDENTS *** This property is in close proximity to the centre of Fallowfield meaning that it has excellent transport links and is great for shopping and Universities. The property comprises of four double bedrooms, a spacious bathroom, a modern fitted kitchen with separate lounge and a garden. Each bedroom comes furnished with a double bed, mirrored wardrobes and desk. The property is offered at half rent over July. Contact our Didsbury office to arrange a viewing

View our Virtual Tour Here - <https://youtu.be/W5fO-FKfhr0>

EPC Rating - C // Council Tax Band B

- Available July 2026
- £115.00 PPPW
- Four Double Rooms
- Spare Room
- Fully Furnished
- Modern and Spacious
- Bills Package Available
- No Deposit Option Available
- Council Tax Band B
- EPC Rating C



Energy Efficiency Rating		
	Current	Potential
Very energy efficient - lower running costs		
(92 plus) A		
(81-91) B		84
(69-80) C	69	
(55-68) D		
(39-54) E		
(21-38) F		
(1-20) G		
Not energy efficient - higher running costs		
England & Wales	EU Directive 2002/91/EC 	





These particulars are believed to be accurate but they are not guaranteed and do not form a contract. Neither Jordan Fishwick nor the vendor or lessor accept any responsibility in respect of these particulars, which are not intended to be statements or representations of fact and any intending purchaser or lessee must satisfy himself by inspection or otherwise as to the correctness of each of the statements contained in these particulars. Any floorplans on this brochure are for illustrative purposes only and are not necessarily to scale.

Offices at: Chorlton, Didsbury, Disley, Hale, Glossop, Macclesfield, Manchester Deansgate, Manchester Whitworth Street, New Mills, Sale, Wilmslow and Withington