

Ferrers Avenue

West Drayton • Middlesex • UB7 7AB

Guide Price: £750,000



coopers
est 1986

Ferrers Avenue

West Drayton • Middlesex • UB7 7AB

An immaculately presented and delightfully extended four-bedroom semi-detached family home offering approximately 1,719 sq ft of stylish and versatile accommodation arranged over three floors. The heart of the home is a stunning open-plan kitchen, dining and breakfast room featuring a central island, skylights and bi-fold doors opening onto a beautifully landscaped rear garden, complemented by a separate living room, family room, utility room and convenient shower room. The upper floors provide four well-proportioned bedrooms, including a superb principal suite with en-suite shower room, alongside a modern family bathroom. Further benefits include off-street parking, contemporary finishes throughout and an excellent balance of character and modern living, making this an ideal home for growing families. Perfectly positioned, the property is just a five-minute walk from the Elizabeth Line, providing direct access to Central London in approximately 20 minutes.

Extended four-bedroom semi-detached family home

- Approximately 1,719 sq ft of beautifully presented accommodation
- Stunning open-plan kitchen, breakfast and dining room with island
- Bi-fold doors and skylights creating a bright, light-filled living space

Separate living room and additional family room

Principal bedroom suite occupying the top floor with en-suite

- Three further well-proportioned bedrooms and a family bathroom
- Utility room and ground floor shower room for added convenience

Approx 100ft rear garden backing directly onto the River Frays

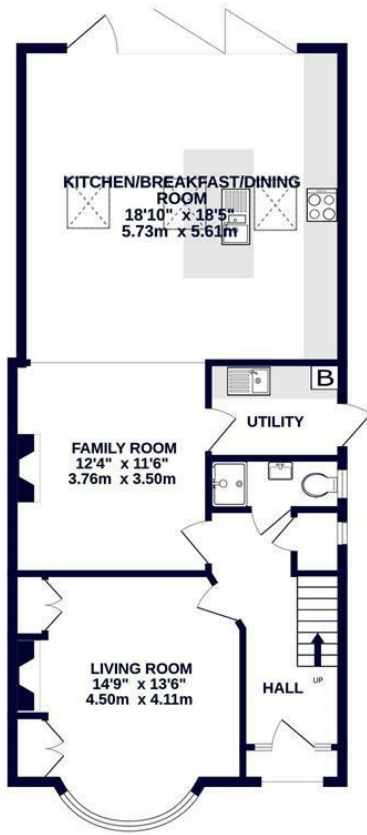
Superb links to Heathrow Airport and the Elizabeth Line

These particulars are intended as a guide and must not be relied upon as statements of fact. Your attention is drawn to the Important Notice on the last page.

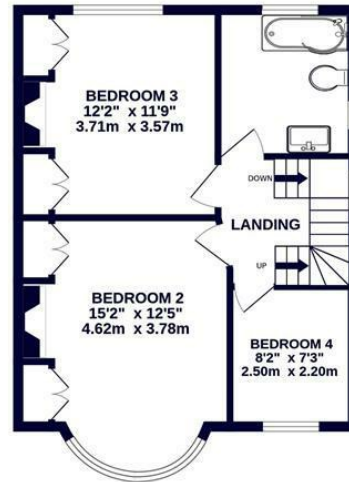




GROUND FLOOR
825 sq.ft. (76.6 sq.m.) approx.



1ST FLOOR
486 sq.ft. (45.2 sq.m.) approx.



2ND FLOOR
409 sq.ft. (38.0 sq.m.) approx.



TOTAL FLOOR AREA : 1719 sq.ft. (159.7 sq.m.) approx.

Whilst every attempt has been made to ensure the accuracy of the floorplan contained here, measurements of doors, windows, rooms and any other items are approximate and no responsibility is taken for any error, omission or mis-statement. This plan is for illustrative purposes only and should be used as such by any prospective purchaser. The services, systems and appliances shown have not been tested and no guarantee as to their operability or efficiency can be given.
Made with Metropix ©2026



1 Tavistock Road, West Drayton,
Middlesex, UB7 7QT
westdrayton@coopersresidential.co.uk

CoopersResidential.co.uk

Energy Efficiency Rating		Current	Target
How energy efficient? - lower rating costs			
Very energy efficient	A		
Energy efficient	B		
Decent	C		
Below average	D		
Energy inefficient	E		
Very energy inefficient	F		
Extremely energy inefficient	G		
Not energy efficient - higher running costs			
England & Wales			
EPC Directive 2002/91/EC			

Important Notice: These particulars, whilst believed to be accurate are set out as a general outline only for guidance and do not constitute any part of an offer or contract. Intending purchasers should not rely on them as statements or representation of fact, but must satisfy themselves by inspection or otherwise has the authority to make or give any representation or warranty in respect of the property.