



OVER 60?

Secure this property
for up to **59% less!**

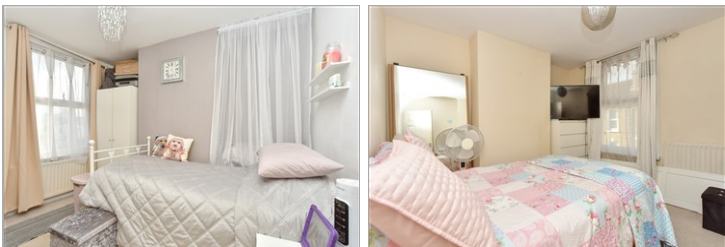
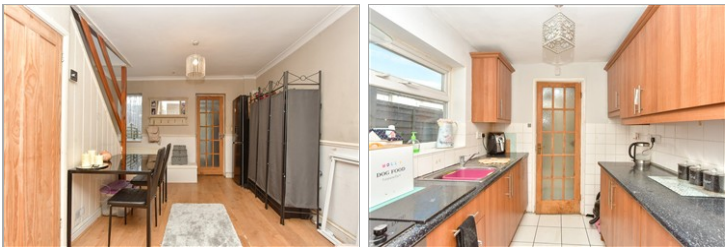
Guide Price
£215,000

Freehold

2x  1x  1x 

**West Street, Gillingham,
Kent, ME7 1EF**

Wards
Helping you move forwards



Main features

- Ideal opportunity for first time buyers
- Double glazing and central heating
- Chance to change internally (subject to usual consents)
- Generous garden
- Situated within walking distance to Gillingham High Street and train station

Accommodation

GROUND FLOOR

Lounge/Diner: 22'6 x 8'11 (6.86m x 2.72m)

Kitchen: 8'5 x 7'0 (2.57m x 2.14m)

Lobby

Bathroom

FIRST FLOOR

Landing

Bedroom 1: 11'8 x 10'7 (3.56m x 3.23m)

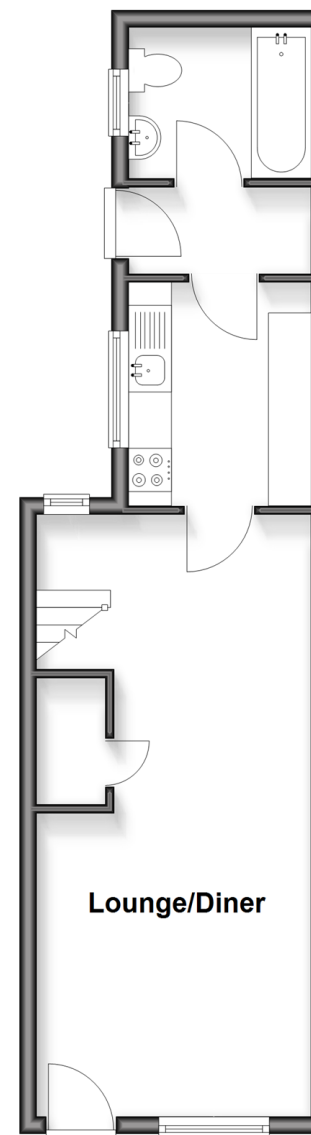
Bedroom 2: 11'2 x 9'0 (3.41m x 2.75m)

OUTSIDE

Rear Garden

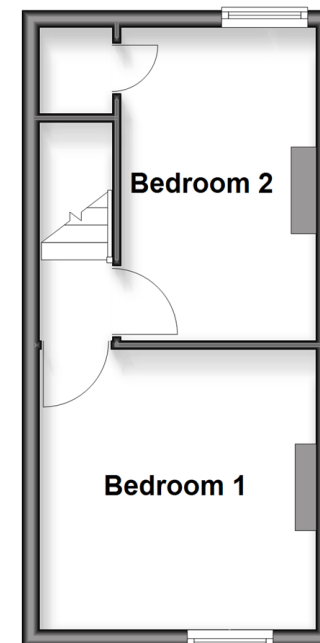
Ground Floor

Approx. 34.2 sq. metres (368.6 sq. feet)



First Floor

Approx. 22.4 sq. metres (241.6 sq. feet)



Call Gillingham - 01634 851191 ■ wardsof Kent.co.uk

- Legal advice should be taken to verify fixtures/fittings, planning, alterations and/or lease details
- Appliances & services are untested, dimensions are approximate and floor plans are not to scale
- Through a Homewise Home For Life Plan people aged 60+ can secure this property for up to 50% less, by purchasing a Lifetime Lease.



10927623/20251118/HF/HF