

# REZIDE

Every home has a story.  
We tell it...

## REZIDE



[info@rezide.group](mailto:info@rezide.group) | [www.rezide.group](http://www.rezide.group) | 01509 274474

# The Laundry House

Stanford on Soar, Leicestershire

[WWW.REZIDE.GROUP](http://WWW.REZIDE.GROUP)

The Laundry House balances character and contemporary living with remarkable ease. Traditional in appearance yet unexpectedly modern in feel, it is a home shaped by thoughtful evolution rather than reinvention.

Natural light, carefully considered interiors and a strong connection to the gardens create a home that feels both welcoming and quietly distinctive.

Warm, individual and full of personality, The Laundry House is a place to be enjoyed as much as it is admired.



Zachary Oldershaw  
Creative Director

REZIDE

07712263185  
Zachary@rezide.group

# The Laundry House

*A home of character, contrast and contemporary living.*





The Laundry House  
3-4 Leake Lane



# The Social Heart.

At the centre of the home is an exceptional open-plan kitchen, dining and living space designed around everyday life. Bathed in natural light from above and framed by views of the garden, it is a space equally suited to quiet mornings, family gatherings and entertaining long into the evening.

The deep blue cabinetry, generous island and carefully considered materials create a space that feels both practical and refined, whilst expansive glazing blurs the boundary between inside and out.





# Spaces to Unwind.

Beyond the main living areas, a series of beautifully composed reception rooms provide space to retreat, relax and reconnect. The drawing room, with its striking colour palette, generous proportions and views across the surrounding greenery, offers a quieter pace to the day.

Together, the living spaces create a home that adapts effortlessly, whether hosting guests, gathering as a family or simply enjoying a moment of calm.







# Contemporary by Design.

Throughout The Laundry House, thoughtful design choices have enhanced and elevated the original building whilst respecting its character. Clean architectural lines, carefully framed views and a restrained palette of materials bring cohesion to old and new.

A striking staircase provides a sculptural focal point, while glazed connections and vaulted spaces ensure natural light flows throughout the home. The result is a property that feels considered, contemporary and entirely individual.





# A Private Retreat.

The principal suite occupies a world of its own. Defined by vaulted ceilings, exposed structural detailing and an abundance of natural light, it offers a sense of space more commonly associated with a boutique hotel than a private residence.

Additional bedrooms and bathrooms continue the theme of comfort and flexibility, providing well-balanced accommodation for family and guests alike.





# Work, Wellness & Flexibility.

Separate from the main house, a versatile detached building offers valuable additional space to suit modern lifestyles. Currently arranged as a home office and gym, it provides the freedom to work, exercise or pursue personal interests without compromise.

Increasingly sought after yet rarely executed so successfully, it adds another dimension to everyday living at The Laundry House.





# Gardens & Outdoor Living.

Designed to be enjoyed throughout the seasons, the gardens are every bit as considered as the home itself. Sweeping lawns, architectural planting and a variety of seating and entertaining areas create a series of outdoor rooms, each with its own perspective.

From summer dining beneath open skies to evenings spent beside the hot tub overlooking neighbouring countryside, the outdoor spaces encourage a slower pace and a stronger connection with the landscape beyond.









# The Setting.

The view beyond the garden is as much a part of The Laundry House as the home itself.

Open fields, mature trees and an ever-changing landscape create a sense of calm and connection to the countryside, whilst the village setting provides a welcoming sense of community.

Peaceful yet well connected, it is a location that offers the best of both worlds.





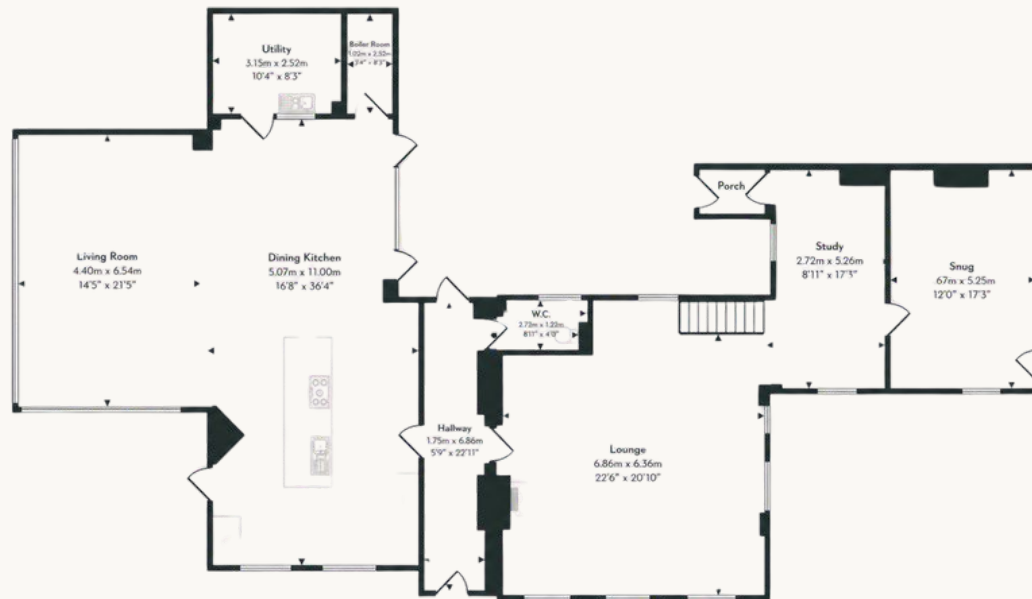




First Floor  
Approx 122 sq m / 1315 sq ft



Outbuilding  
Approx 22 sq m / 235 sq ft



Ground Floor  
Approx 195 sq m / 2099 sq ft

# REZIDE

3649 - Sq Ft

Whilst every attempt has been made to ensure the accuracy of the floorplan contained here, measurements of doors, windows, rooms and any other items are approximate and no responsibility is taken for any error, omission or mis-statement. This plan is for illustrative purposes only and should be used as such by any prospective purchaser. The services, systems and appliances shown have not been tested and no guarantee as to their operability or efficiency can be given.



