



**Latimer Road, TW11**

**£879,950**

**Dexters**



## Latimer Road, TW11

This semi-detached home is located in a quiet cul de sac that is perfectly positioned for local schools, Teddington High Street and station. There is no onward chain and you can move in quickly.

This home is larger than it looks and it has driveway parking to the front. Whilst the house may need some cosmetic updates it offers light and spacious accommodation throughout with ample storage and generous living space.

There is spacious reception room to the rear of the property measuring 19ft with large doors opening onto the garden. This room offers ample space to relax as well as dining space and it cleverly leads onto the kitchen making this a perfect sociable family living area. The kitchen has space for all appliance's and room for a breakfast table. Completing the ground floor there is a large storage space and cloakroom. There are two double bedrooms to the first floor and a family bathroom. The top floor offers a further double bedroom with an en-suite shower and large eaves storage. The rear garden is lovely and secluded with a patio, lawn and side access.

Latimer Road is a turning off Church Road. It is perfect for schooling and transport links. Teddington High Street and Broad Street are within easy reach along with Royal Bushy Park.

### Features

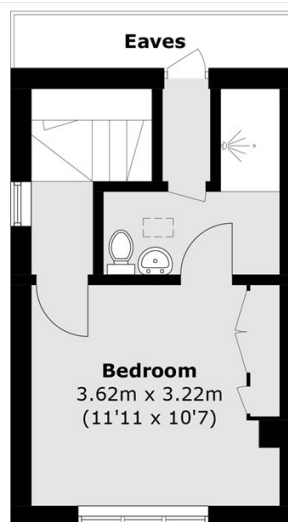
- No Onward Chain
- Modern
- Semi-Detached
- Three Double Bedroom
- Secluded Garden
- Excellent Location



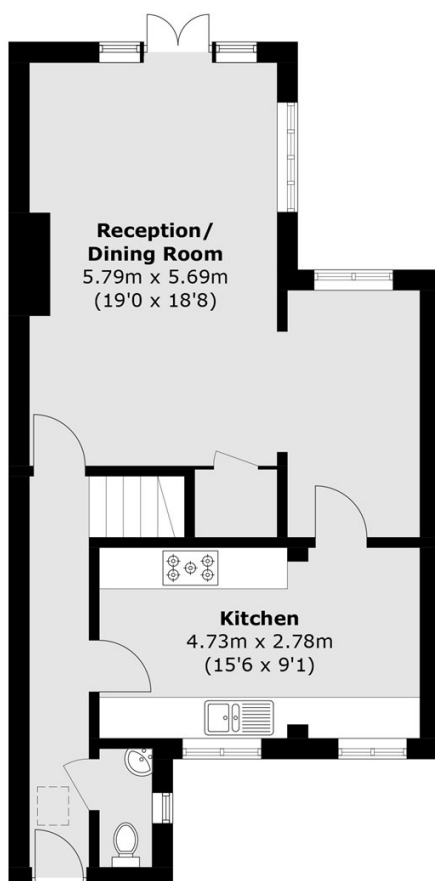




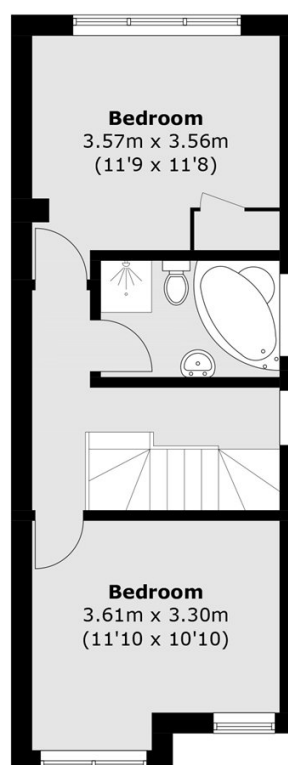
# Latimer Road, Teddington, TW11



**Second Floor**



**Ground Floor**



**First Floor**

Total area (approx.): 111.4 sq. m (1199.1 sq. ft)  
(Excluding Eaves)