



Curbar Curve, Inkersall Chesterfield S43 3HX



welcome to

Curbar Curve, Inkersall Chesterfield

A well-balanced home with a spacious living room, generous kitchen, useful utility and three flexible bedrooms. A private rear garden, garage and off-road parking complete this practical, welcoming property ideal for modern family living.

Front Yard / Driveway

A neat, practical frontage with a driveway offering easy off-road parking and a clear, open approach to the property. It sets a calm, tidy first impression before stepping inside.

Hall

The hall forms a bright, inviting entry point, giving an immediate sense of space and flow. It provides access to the main ground-floor rooms and creates a smooth transition from outdoors to the heart of the home.

Kitchen

The kitchen is a generous, well-arranged space designed for both everyday cooking and relaxed family living. Its proportions allow for excellent workspace and storage, with room for informal dining or socialising while meals are prepared. Natural light enhances the sense of openness.

Living Room

The living room sits at the front of the home, creating a wonderfully spacious and versatile area for relaxing, entertaining or family time. Its generous proportions allow for flexible furniture layouts, while large windows draw in plenty of natural light.

Utility

A highly practical addition, the utility room keeps the home running smoothly. With space for laundry appliances and extra storage, it helps maintain a clutter-free kitchen and offers a handy spot for muddy boots or pet essentials.

Stairs / Landing

The staircase rises neatly from the hall, leading to a bright landing that connects the three bedrooms and bathroom. This central space feels open and airy, helping the first floor flow naturally.

Bedroom One

A well-proportioned main bedroom offering a calm, restful atmosphere. There's ample space for wardrobes and additional furnishings, making it an ideal retreat at the end of the day.

Bedroom Two

Another comfortable double room, perfect for guests, children or a secondary main bedroom. Its shape and light make it easy to furnish and enjoy.

Bedroom Three

A versatile third bedroom that works beautifully as a child's room, nursery, dressing room or home office. Cosy yet practical, it makes excellent use of the available space.

Bathroom

The bathroom serves the first floor with a clean, functional layout. There's room for a full suite, and the space feels bright and practical — ideal for busy mornings and relaxing evening routines.





Rear Garden

The rear garden offers a private outdoor escape, with space for seating, play or planting depending on lifestyle. It's a peaceful extension of the home's living areas, perfect for enjoying warm days and quiet evenings.

Garage

The garage provides excellent additional storage or secure parking, with potential for workshop use, hobby space or general household overflow. A valuable asset for modern living.



view this property online williamhbrown.co.uk/Property/CSF105261



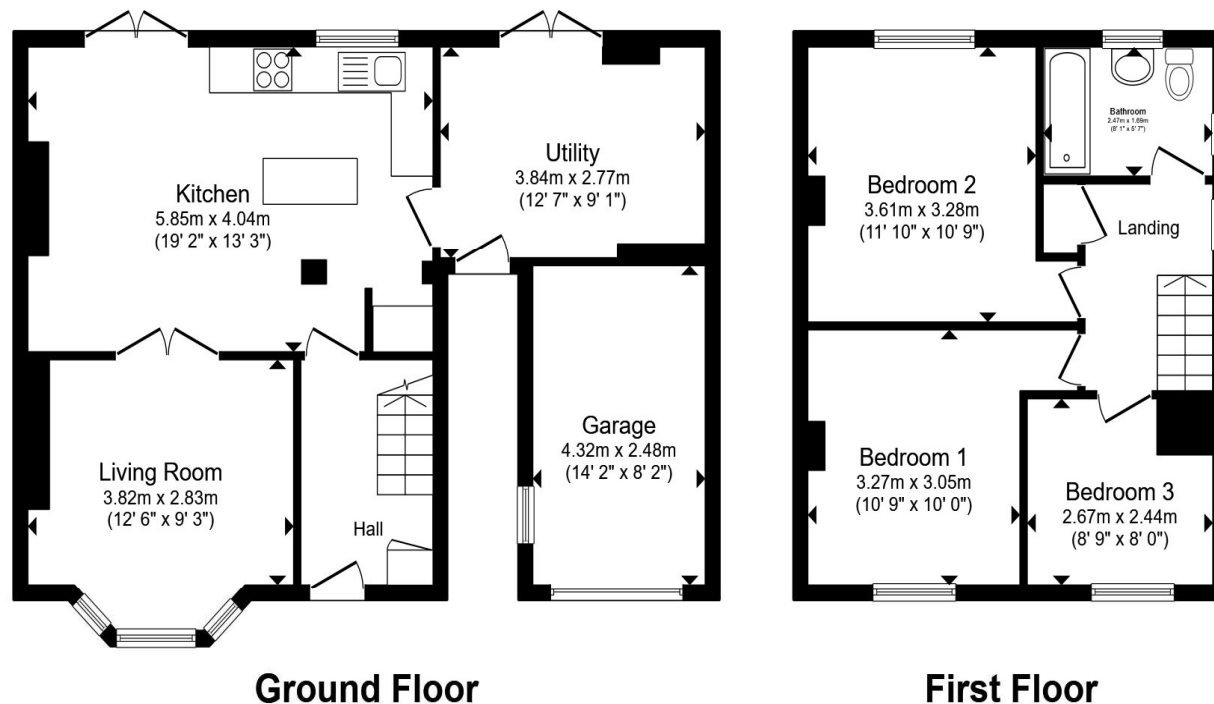
welcome to

Curbar Curve, Inkersall Chesterfield

- Council Tax Band - A
- Driveway and Garage
- Modern Kitchen
- Practical Utility Room
- Three Flexible Bedrooms

Tenure: Freehold EPC Rating: D
Council Tax Band: A

£220,000



Total floor area 104.6 m² (1,126 sq.ft.) approx

This floor plan is for illustrative purposes only. It is not drawn to scale. Any measurements, floor areas (including any total floor area), openings and orientation are approximate. No details are guaranteed, they cannot be relied upon for any purpose and they do not form part of any agreement. No liability is taken for any error, omission or misstatement. A party must rely upon its own inspection(s). Powered by www.propertybox.io


william
h brown

view this property online williamhbrown.co.uk/Property/CSF105261



Property Ref:
CSF105261 - 0003

1. MONEY LAUNDERING REGULATIONS Intending purchasers will be asked to produce identification documentation at a later stage and we would ask for your co-operation in order that there is no delay in agreeing the sale. 2. These particulars do not constitute part or all of an offer or contract. 3. The measurements indicated are supplied for guidance only and as such must be considered incorrect. Potential buyers are advised to recheck measurements before committing to any expense. 4. We have not tested any apparatus, equipment, fixtures or services and it is in the buyers interest to check the working condition of any appliances. 5. Where an EPC, or a Home Report (Scotland only) is held for this property, it is available for inspection at the branch by appointment. If you require a printed version of a Home Report, you will need to pay a reasonable production charge reflecting printing and other costs. 6. We are not able to offer an opinion either written or verbal on the content of these reports and this must be obtained from your legal representative. 7. Whilst we take care in preparing these reports, a buyer should ensure that his/her legal representative confirms as soon as possible all matters relating to title including the extent and boundaries of the property and other important matters before exchange of contracts.

William H Brown is a trading name of Sequence (UK) Limited which is registered in England and Wales under company number 4268443, Registered Office is Cumbria House, 16-20 Hockliffe Street, Leighton Buzzard, Bedfordshire, LU7 1GN. VAT Registration Number is 500 2481 05.


william h brown



01246 204492



chesterfield@williamhbrown.co.uk



6 Glumangate, CHESTERFIELD, Derbyshire, S40
1TP



williamhbrown.co.uk