



W
WHITES

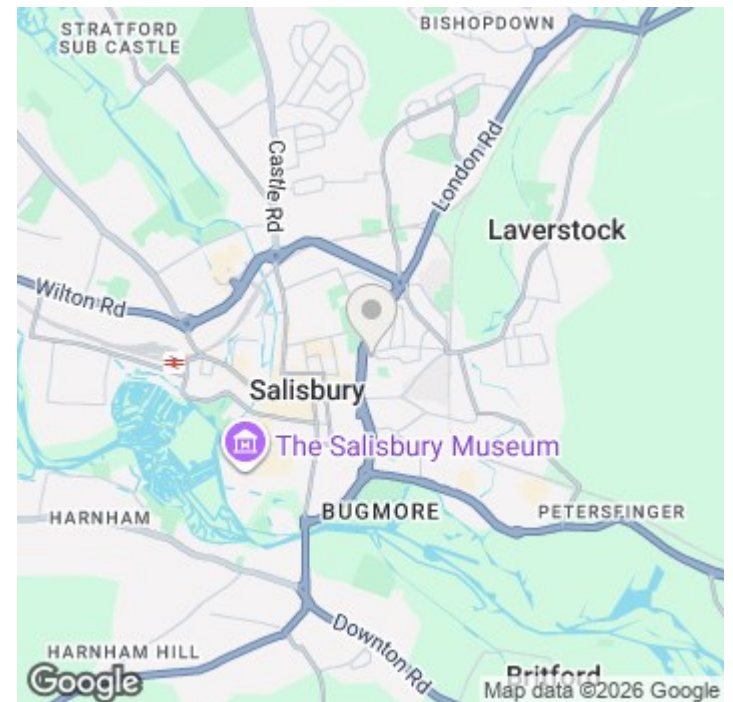
Flat 3, 4 Elm Grove Road, Salisbury, Wiltshire, SP1 1JW

£875 PCM

About The Property

This lovely modern first-floor flat is located just outside the ring road. The property features a communal entrance hall with a security entry phone and stairs leading to the first floor. Inside, you will find your own hallway complete with a large cupboard. The kitchen is modern and equipped with a gas hob, stainless steel cooker hood, electric oven, work surfaces, wall units, base units, and drawers. There is plumbing and space available for a washing machine, as well as a recess suitable for an upright fridge/freezer. The flat includes a double bedroom with a built-in cupboard, a lounge facing the front, and a shower room that features a large shower cubicle, WC, and basin. Additional amenities include gas-fired central heating, double glazing, carpets, and window blinds. The property is offered unfurnished.

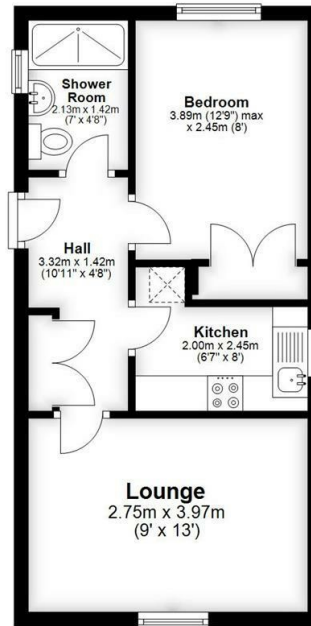
- First floor apartment
- Double bedroom
- Sitting room
- Fitted kitchen
- Shower room
- Conveniently located
- Gas fired central heating
- Residents' permit street parking





Ground Floor

Approx. 33.2 sq. metres (357.2 sq. feet)



Total area: approx. 33.2 sq. metres (357.2 sq. feet)

Further Information

Let available date: 4th September 2026 NB: This date is provisional and will only be confirmed once referencing has been successfully completed.

Property type: Flat

Furnish type: Unfurnished

Deposit: £1,009

Local authority: Wiltshire Council

Council Tax: Band B

EPC: B(81)

Energy Efficiency Rating

	Current	Potential
Very energy efficient - lower running costs		
(92 plus) A		
(81-91) B	81	81
(69-80) C		
(55-68) D		
(39-54) E		
(21-38) F		
(1-20) G		
Not energy efficient - higher running costs		
England & Wales	EU Directive 2002/91/EC 