



## Sangora Road, SW11

£2,200 Per calendar month

A near 700sqft ground floor one bedroom flat with a private garden and ample storage including a cellar.

Sangora Road is ideally located to all the amenities set on St. John's Hill and Northcote Road, with the wide open spaces of Clapham and Wandsworth Common only a short distance away

### Features

- One Double Bedroom
- Private Garden
- Cellar
- Clapham Common
- Clapham Junction
- St. John's Hill

# Sangora Road, London, SW11

## Sangora Road, SW11

Approx. Gross Internal Area \*  
699 Sq Ft - 64.94 Sq M

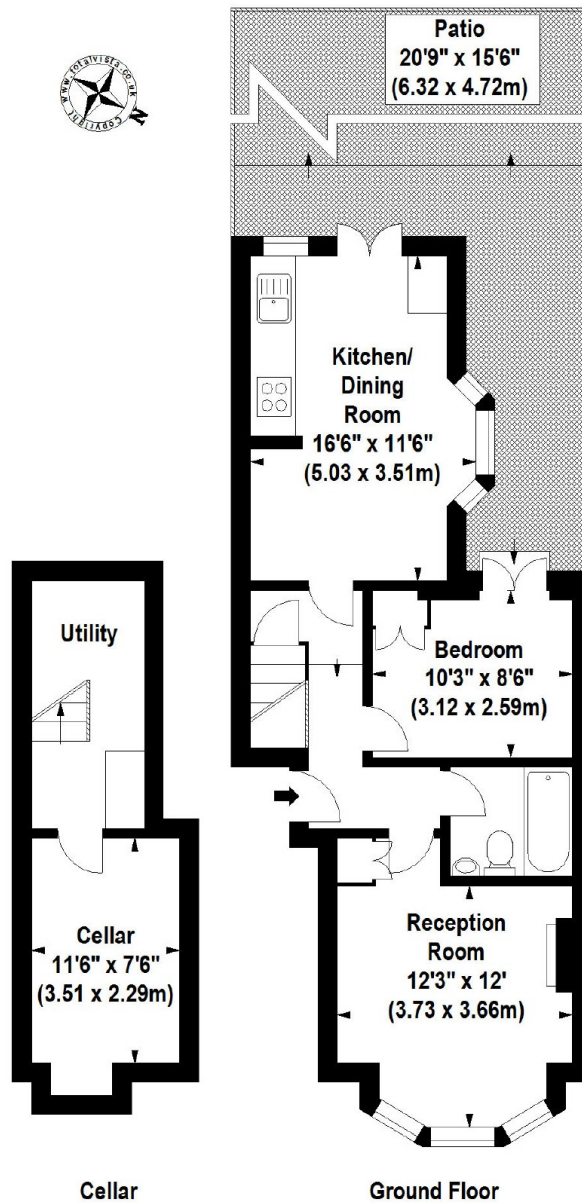


Illustration For Identification Purposes Only. Not To Scale

\*Floorplan Drawn According To RICS Guidelines

© www.totalvista.co.uk 2010 (aa)

# Dexters

Battersea  
174A Lavender Hill  
London  
SW11 5TG

Lettings  
020 7350 1300

Energy Rating: D. We aim to make our particulars both accurate and reliable. However they are not guaranteed; nor do they form part of an offer or contract. If you require clarification on any points then please contact us, especially if you're traveling some distance to view. Please note that appliances and heating systems have not been tested and therefore no warranties can be given as to their good working order.

 **RICS** | Regulated  
Estate Agent  
and Letting Agent

dexters.co.uk