

# Parkheath

*Sold on Service*

**Eton College Road NW3**  
**£3,250 PCM (£750 per week) - Camden Band D**



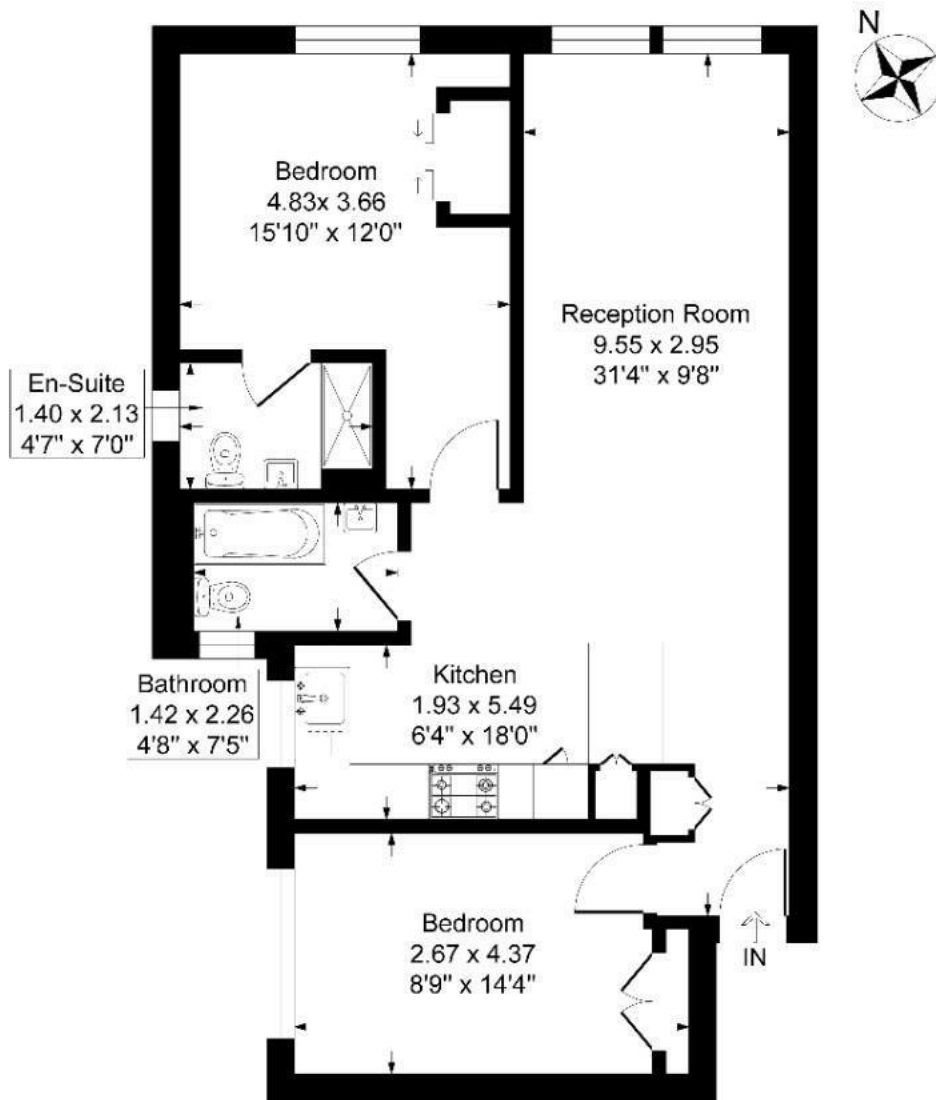
Beautiful 2 bedroom, 2 bathroom apartment  
Lifts, porter and communal garden  
Sleek kitchen with breakfast bar  
Contemporary bathroom  
Walking distance to Primrose Hill

2nd floor in popular mansion block  
Bright reception  
Main bedroom with en-suite shower  
Located moments to Chalk Farm tube  
EPC: Rating C, Council Tax: Camden band D

Belsize Park Office 020 7431 3104

# Eton Rise, Eton College Road London, NW3

Approximate Gross Internal Floor Area = 68.1 sq m / 734 sq ft



## Second Floor

Illustration for identification purposes only, measurements are approximate, not to scale.

The particulars do not constitute part of an offer or contract. The particulars, including text, photographs and plans, are for the guidance only of prospective purchasers/tenants and must not be relied upon as statements of fact. The descriptions provided therein represent the opinion of the author and whilst given in good faith should not be construed as statements of fact. Nothing in these particulars shall be deemed a statement that the property is in good condition or otherwise or that any services or facilities are in good working order. All measurements are approximate