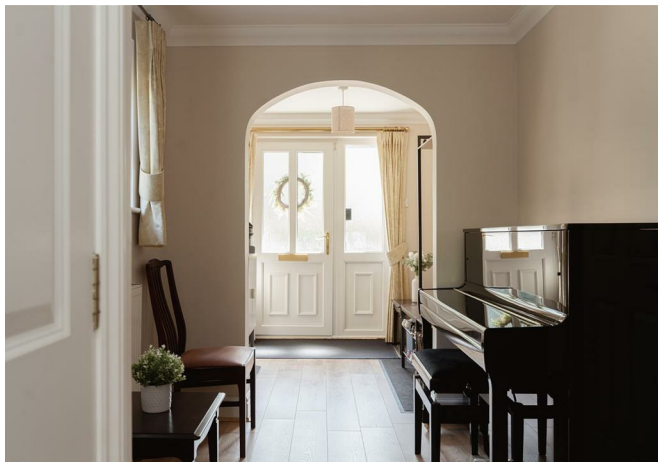




# Howard Place, Reigate

Guide Price £725,000- £750,000





Tucked away in a sought-after central Reigate location, this substantial end-of-terrace townhouse offers over 1,700 sq ft of versatile accommodation, all within a short walk of the town centre, station and some of the area's most popular cafés, restaurants and green spaces.





Guide Price £725,00 - £750,000

This is a home that continually surprises, with generous proportions and flexible living space arranged across three floors. Whether you're looking for a growing family, space to work from home, or accommodation that can adapt as life changes, this property delivers in abundance.

The heart of the home is the bright and spacious first-floor living space, where natural light pours through the dual-aspect sitting room, creating an inviting place to relax and unwind. The adjoining kitchen and dining room provide an ideal setting for everyday family life and entertaining alike.

The bedroom accommodation is equally impressive. The principal suite enjoys its own dressing area and en-suite shower room, while the remaining bedrooms offer flexibility for family members, guests or home working. A ground-floor bedroom with en-suite facilities is particularly appealing for visiting relatives, independent teenagers or those seeking multi-generational living.

Outside, the west-facing garden has been designed for ease of maintenance, providing a private spot to relax and to the front, there is off-street parking for two vehicles as well as access to the integral garage.

One of Howard Place's greatest attractions is its exceptional location. Reigate's bustling high street is just moments away, offering an excellent choice of independent boutiques, cafés, restaurants and pubs. Reigate Station is within easy walking distance for commuters, while Priory Park and the Castle Grounds provide beautiful open spaces to enjoy throughout the year. For those travelling further afield, the M25 is conveniently close by.



# Need to know

- Over 1,700 sq ft of accommodation, offering exceptional space rarely found so close to Reigate town centre.
- Flexible layout perfectly suited to modern family life, home working or multi-generational living.
- Just a short walk to Reigate Station, making it an excellent choice for London commuters.
- Positioned within easy reach of Reigate's thriving café culture, shops and boutiques, restaurants and pubs.
- Private and low-maintenance rear garden, providing the perfect space for relaxing, entertaining and al fresco dining.
- Ground floor suite provides excellent guest accommodation or a private space for older children or relatives.
- Integral garage offering valuable storage, secure parking or potential for future conversion (subject to any necessary consents).
- Priory Park, Reigate Castle Grounds and beautiful countryside walks all accessible on foot.
- Convenient access to the M25 and wider motorway network for travel across Surrey, London and the South East.



## Interested?

reigate@ralphjames.co.uk  
01737 333677

ralphjames.co.uk

Howard Place, Reigate  
Total Area: 159.8 m<sup>2</sup> ... 1720 ft<sup>2</sup>  
FOR ILLUSTRATIVE PURPOSES ONLY.

Whilst every attempt has been made to ensure the accuracy of the floor plan shown, all measurements, positioning, fixtures, features, fittings and any other data shown are an approximate interpretation for illustrative purposes only and are not to scale.

No responsibility is taken for any error, omission, mis-statement or use of data shown.

The above statement applies to both 'Still Moving London LTD' and the Company or individual displaying this floor plan.

Unauthorised reproduction prohibited.

© Still Moving London LTD (www.stillmoving.london)

RALPH JAMES