



Flat 7 Ibrox Court, Palmerston Road, Buckhurst Hill

Buckhurst Hill



Flat 7 Ibrox Court, Palmerston Road

Buckhurst Hill

Offered Chain Free, this spacious ground-floor maisonette is ideally located just moments from Queens Road and Buckhurst Hill Underground Station (Central Line), providing excellent transport links and everyday convenience and spans in excess of 600 Sq. ft of Living accommodation.

- Ground Floor Maisonette
- Two Double Bedrooms
- 607 Sq. Ft Of Accommodation Space
- Private Outside Space
- Long Lease - 169 Years Remaining
- Chain Free
- 0.3 Miles From Buckhurst Hill Central Line Station
- Short Walk To Queens Road High Street Shops/Restaurants & Bars



The property is accessed via a private entrance on Westbury Lane and offers well-presented accommodation comprising a bright dual-aspect reception room, two generous double bedrooms, a spacious kitchen with access out to the rear private garden, and a family bathroom. The well-designed layout provides comfortable and versatile living space, ideal for both relaxing and entertaining, while the ground-floor position adds to the convenience and appeal of this attractive home.

Ibrox Court is a private development located in the heart of Buckhurst Hill. Perfectly situated moments from Queen's Road and the Central Line station, the property also enjoys easy access to the open green spaces of Epping Forest. Buckhurst Hill remains one of the area's most desirable locations, renowned for its excellent transport connections, independent shops, popular eateries and proximity to nature. The Central Line provides direct links to the City, Canary Wharf, the West End and Westfield Stratford, while the M25, M11 and major routes into London are all conveniently accessible.

Council Tax band: C

Tenure: Leasehold

EPC Energy Efficiency Rating: D

EPC Environmental Impact Rating:

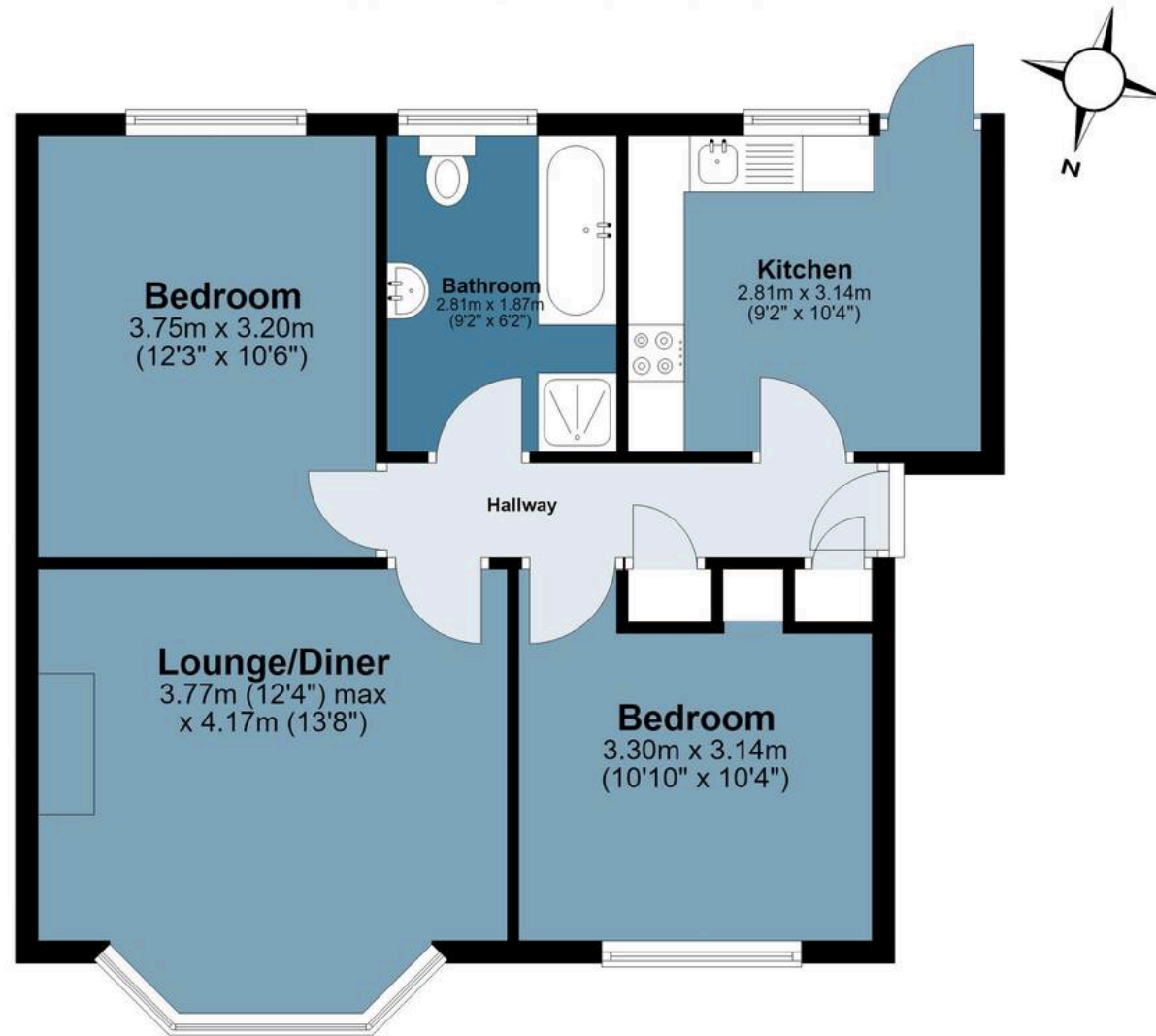






Ground Floor

Approx. 56.5 sq. metres (607.8 sq. feet)



Total area: approx. 56.5 sq. metres (607.8 sq. feet)

All measurements have been taken as a guide to prospective buyers only and are not precise. This plan is for illustrative purposes only and no responsibility for any error, omission or misstatement. The services, systems and appliances shown have not been tested and no guarantee as to their operability or efficiency can be given. Measurements may have been taken from the widest area and may include wardrobe/cupboard space. No guarantee is given to any measurements including total areas. Buyers are advised to take their own measurements.

© @modephotouk | www.modephoto.co.uk
Plan produced using PlanUp.

Ibrox Court

FROM EAST LONDON ENERGY TO WEST ESSEX EASE

We Make Moving Home Easy.

At Butler and Stag, we do more than just connect London to West Essex – we make the move seamless. With offices spanning from vibrant East London to the tranquillity of West Essex, we understand the nuances of each area and the journey people take between them. Our marketing goes beyond standard listings, showcasing every property with precision, creativity, and reach that others simply can't match. Coupled with an unparalleled attention to detail, from first enquiry to final move-in, we ensure every client and customer feels informed, supported, and confident. Simply put, we do the little things that make a big difference, setting us apart in every step of the property experience.



LONDON STRATFORD SOUTH WOODFORD BUCKHURST HILL LOUGHTON EPPING BEYOND

Like what you see? Let's talk

Book your **FREE** valuation now



01992 667666

theydon@butlerandstag.com

4 Forest Drive, Theydon Bois, CM16 7EY

[butlerandstag.uk](https://www.butlerandstag.uk)

IMPORTANT NOTICE - These particulars have been prepared in good faith and they are not intended to constitute part of an offer or contract. We have not performed a structural survey on this property and the services, appliances and specific fittings have not been tested. All photographs, measurements, floor plans and distances referred to are given as a guide and should not be relied upon.

BUTLER & STAG

