



Tierney Lane, W6

£725,000

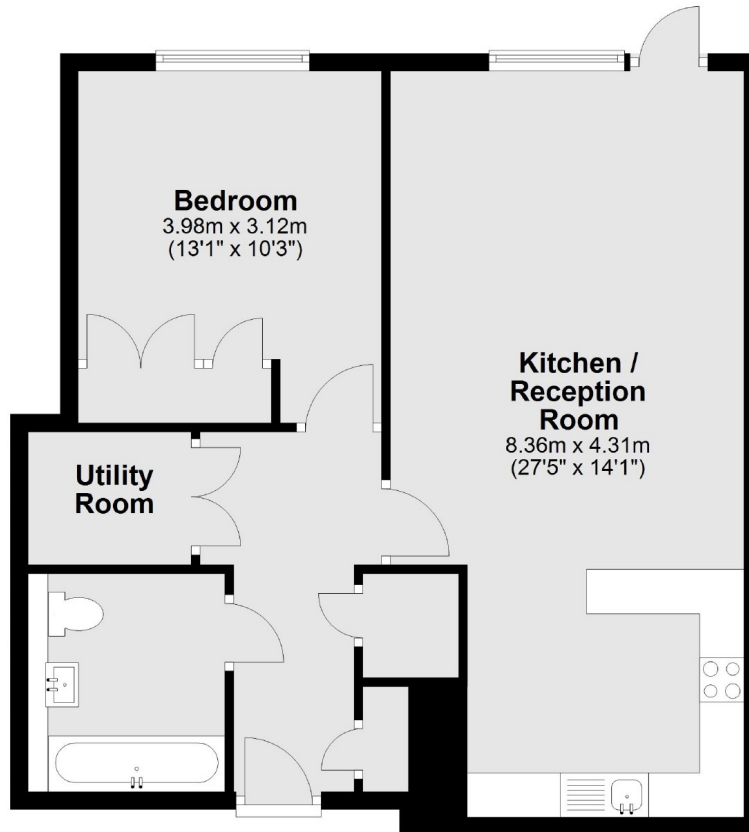
An exclusive London apartment in a wonderful position. Set in beautifully landscaped gardens beside the River Thames, this elegantly designed one bedroom flat with a very large open planned kitchen and living leading onto your own private patio, the property further benefits from allocated parking.

Fulham Reach offers the most wonderful lifestyle. Residents enjoy exclusive membership of the Fulham Reach lifestyle club which features a host of private facilities including a spa, gymnasium, swimming pool, virtual golf, wine cellar and screening room.

Features

- One Bedroom
- Private Patio
- Modern Appliances
- Leisure Facilities
- Hammersmith Station
- Allocated Parking

Tierney Lane, London, W6



Total area: approx. 64.7 sq. metres (696.2 sq. feet)