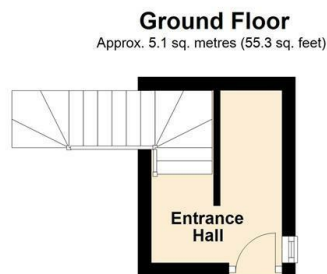
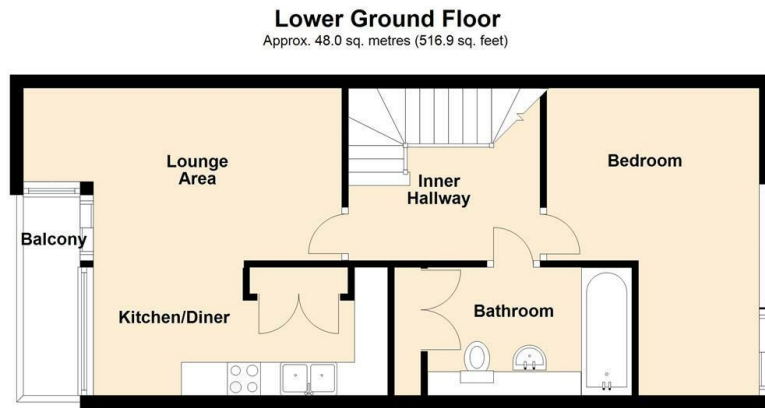




33 Norwich, South Street, Park Hill, Sheffield, South

£995 PCM

- Architect Designed Apartment
- Open Plan Living, Dining and Kitchen
- Air filtration and District Heating System
- One Bedroom
- Balcony With Panoramic City Views
- Part Furnished
- Superbly Presented Accommodation
- Landscaped Communal Gardens
- Rent includes district heating costs



Total area: approx. 53.2 sq. metres (572.1 sq. feet)
Whilst every care has been taken to prepare these floor plans, they are for guidance purposes only.
Plan produced using PlanUp.



Directions

Viewings

Viewings by arrangement only. Call 0114 283 4050 to make an appointment.

Council Tax Band

B

EPC Rating:

B

Energy Efficiency Rating		Current	Potential
<i>Very energy efficient - lower running costs</i>			
(92 plus) A			
(81-91) B		83	83
(69-80) C			
(55-68) D			
(39-54) E			
(21-38) F			
(1-20) G			
<i>Not energy efficient - higher running costs</i>			
England & Wales		EU Directive 2002/91/EC	