



## Spring Mill, Rochdale, OL12

£1,280 PCM

\*One Month Rent Free & £250 Voucher\*

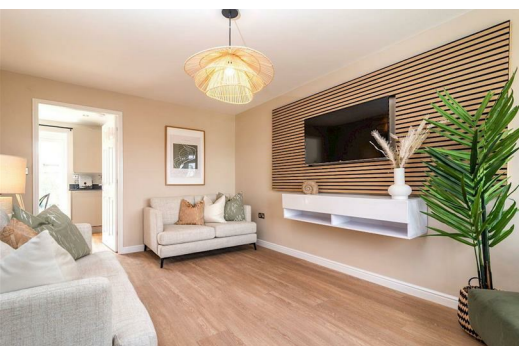
\*Deposit Free Option Available\*

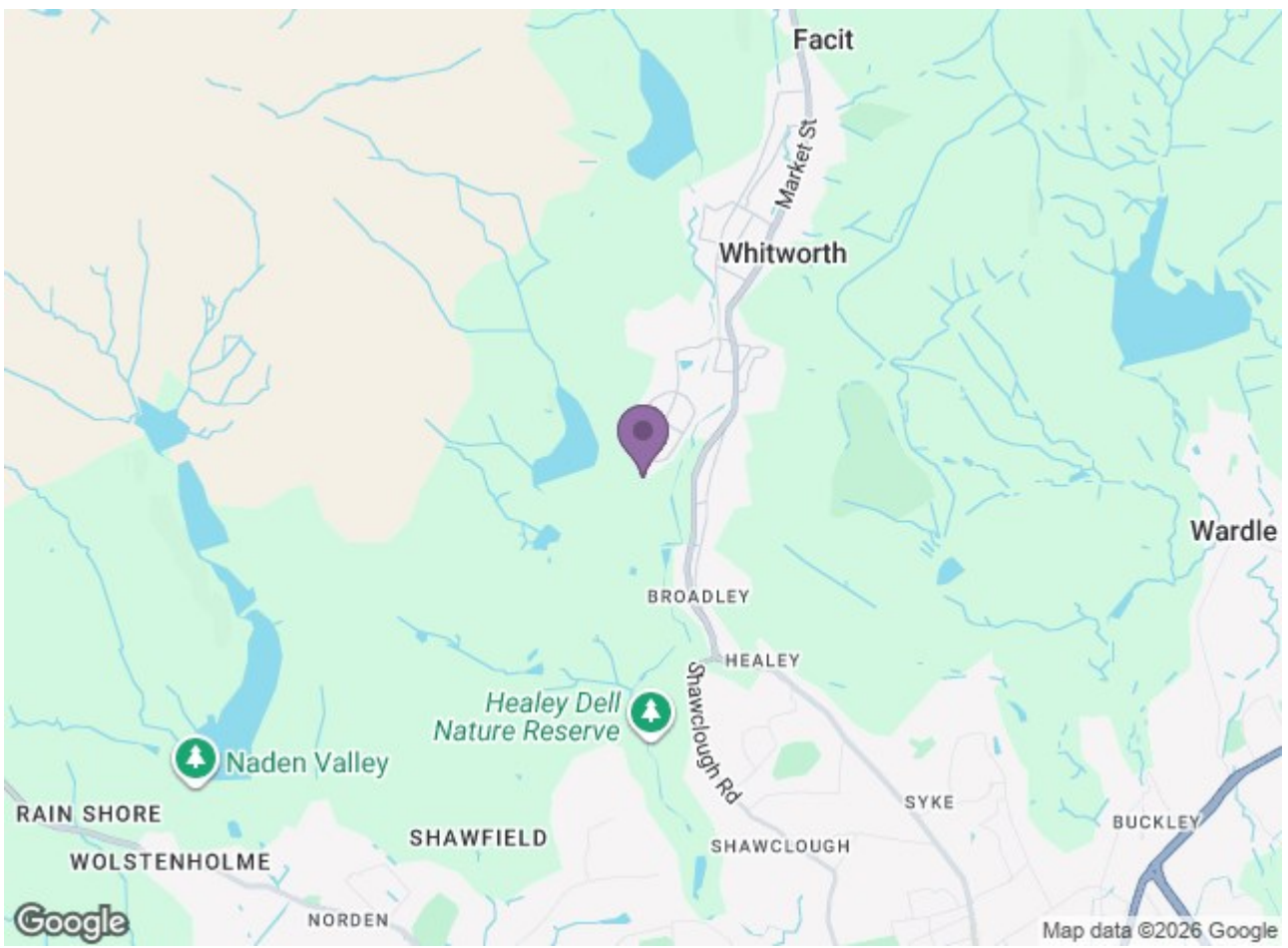
Explore the beauty of Spring Mill, an enchanting development of 2, 3, and 4-bedroom homes nestled in Whitworth, Lancashire.

Presenting The Fergus, a stunning three bedroom semi-detached home available for rent. Experience the perfect blend of beauty and functionality in this property.

Step inside and be welcomed by the bright living room, offering a comfortable space to relax and unwind. The contemporary open-plan kitchen-diner awaits, providing an ideal setting for cooking up a storm. Open the French doors and seamlessly transition between indoor and outdoor living as you step out into the garden, creating a harmonious flow of space. Convenience is also at your fingertips with a handy downstairs WC.

Upstairs, you'll discover a spacious master bedroom, offering a haven of relaxation. There are two additional well-proportioned bedrooms, both with a cosy and comfortable feel to them. A family bathroom, finished with Porcelanosa tiling, completes this level, adding a touch of elegance to your daily routines.





Energy Efficiency Rating		Environmental Impact (CO <sub>2</sub> ) Rating	
Current	Potential	Current	Potential
Energy A	Energy A	Impact A	Impact A
Energy B	Energy B	Impact B	Impact B
Energy C	Energy C	Impact C	Impact C
Energy D	Energy D	Impact D	Impact D
Energy E	Energy E	Impact E	Impact E
Energy F	Energy F	Impact F	Impact F
Energy G	Energy G	Impact G	Impact G

Energy Efficiency Rating: 83 (Current), 88 (Potential)  
 Environmental Impact (CO<sub>2</sub>) Rating: A (Current), A (Potential)

**Ascend**  
 Built on higher standards